



# **DRYDEN**

---

## **GOLD CORP**

**TSXV: DRY | OTCQB: DRYGF**  
**WWW.DRYDENGOLD.COM**

**FEBRUARY 2025**

# Acknowledgements & Forward-Looking Statements

**Dryden Gold Corp acknowledges all Indigenous Peoples and that it is operating on the traditional homelands of the Wabigoon Lake Ojibway Nation and Eagle Lake First Nation.**

*Certain statements contained herein constitute “forward-looking statements” within the meaning of the applicable Canadian securities legislation. These forward-looking statements are based on current expectations, estimates and projections about the Canadian mining and mineral exploration industry based on management’s beliefs and certain assumptions made by management. Readers are cautioned that such forward-looking statements are not guarantees of future performance and are subject to risks, uncertainties and assumptions that are difficult to predict and the actual results and performance of Dryden Gold Corp. (the “Company”) may differ materially from the results implied by such statements. Readers are cautioned not to place undue reliance on any forward-looking statements. Unless otherwise required by law, the Company also disclaims any obligation to update its view of any such risks or uncertainties or to announce publicly the result of any revisions to the forward-looking statements made here.*

*This document contains proprietary information that is the property of Dryden Gold Corp. Neither this document, nor the proprietary information contained herein, shall be published, reproduced, copied, disclosed or used for any other purpose, other than the review and consideration of this document.*

*This presentation is not an offer, nor the solicitation of an offer to buy any securities. Such an offer, if made, will be made only through a prospectus or other such document issued in accordance with applicable securities laws, and other applicable laws, rules and regulations., Or pursuant to the applicable exemption from the requirement to deliver a prospectus, in accordance with applicable laws.*

*Historical statements contained in this document regarding past activities should not be taken as a representation that such trends or activities will continue in the future. In particular, historical results should not be taken as a representation that such trends will be replicated in the future. No statement in this document is intended to be nor may be construed as a profit forecast.*

*An investment in the Company is speculative and involves substantial risk and is only suitable for investors that understand the potential consequences and are able to bear the risk of losing their entire investment. Investors should consult with their own legal, tax and financial advisors with respect to all such risks before making an investment.*

*The Company is in the early stage of development and has a limited operational history, making it difficult to accurately predict business operations. The Company has limited resources and may run out of capital prior to becoming profitable. The Company may fail and investors may lose their entire investment.*

*The technical disclosure in this presentation has been approved by Maura J. Kolb, M.Sc., P.Geo. a Qualified Person as defined by National Instrument 43-101 of the Canadian Securities Administrators.*

**DRYDEN**  
GOLD CORP



# Key Value Drivers



## Experienced Management

History of success in navigating M&A  
 Technical team has extensive regional experience



## Investment Upside

High-grade gold across the entire Dryden District  
 Limited drilling – 30,000 meters  
 System has never been drilled tested at depth  
 Regional Greenfield targets at Hyndman & Sherridon  
 Strategic investment from Centerra Gold

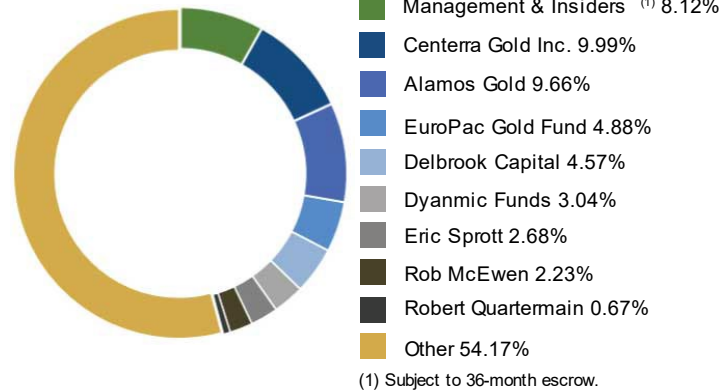


## Favourable Mining Jurisdiction

Excellent infrastructure, including grid power  
 Major highway access and logging roads  
 Year-round drilling  
 Significant tax benefits and government grants  
 Collaborative relationships with First Nations communities



## MAJOR SHAREHOLDERS



## SHARE STRUCTURE

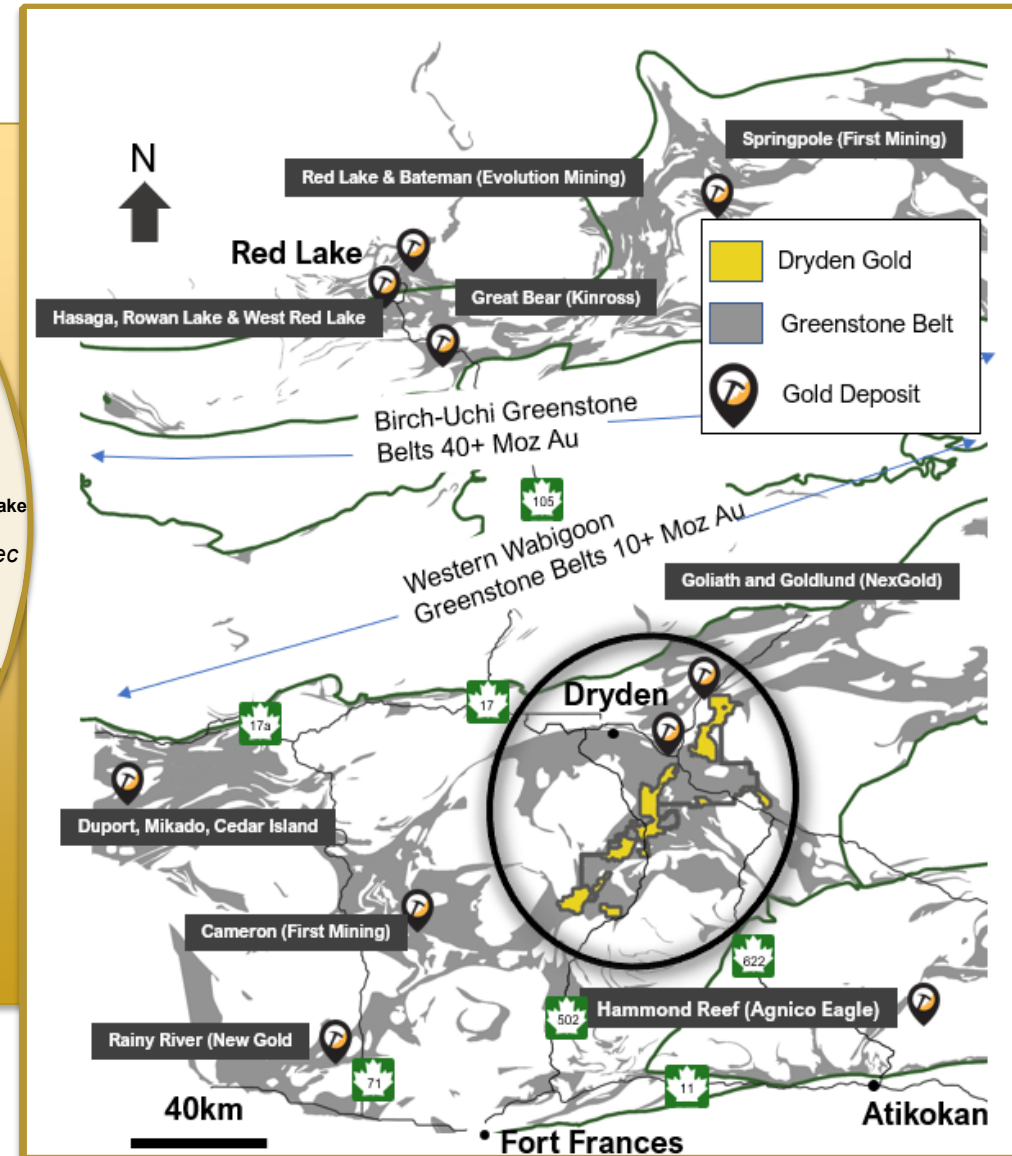
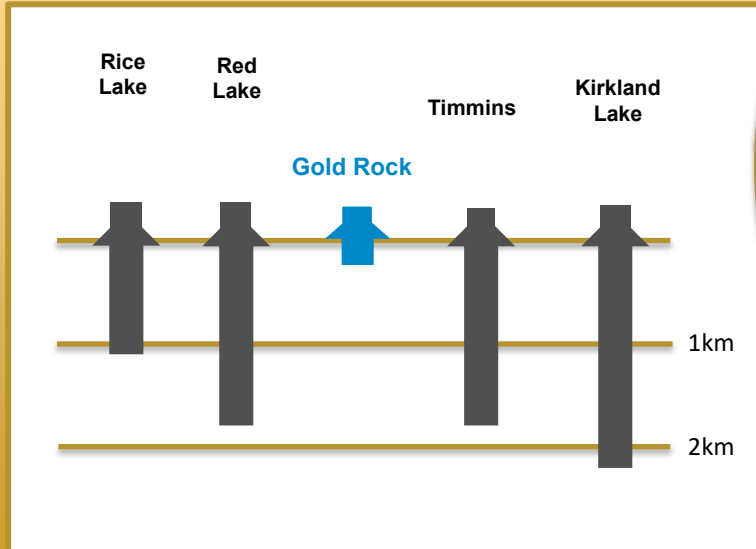
Trading Symbols As at January 11, 2025	TSXV: DRY OTCQB: DRYGF
Current Issued and Outstanding	150,308,030
Warrants Outstanding	54,274,986
ESOP Options Outstanding	5,900,000
Fully Diluted	<u>210,483,016</u>
Cash Balance	7,300,000

## NEWSLETTER WRITER COVERAGE

Chen Lin | [chenpicks.com](http://chenpicks.com)  
 Brien Lundin | [goldnewsletter.com](http://goldnewsletter.com)

# Prolific Gold Region | Under Explored in the Dryden Gold District

## Archean Lode Gold Mines Camps Central Canada

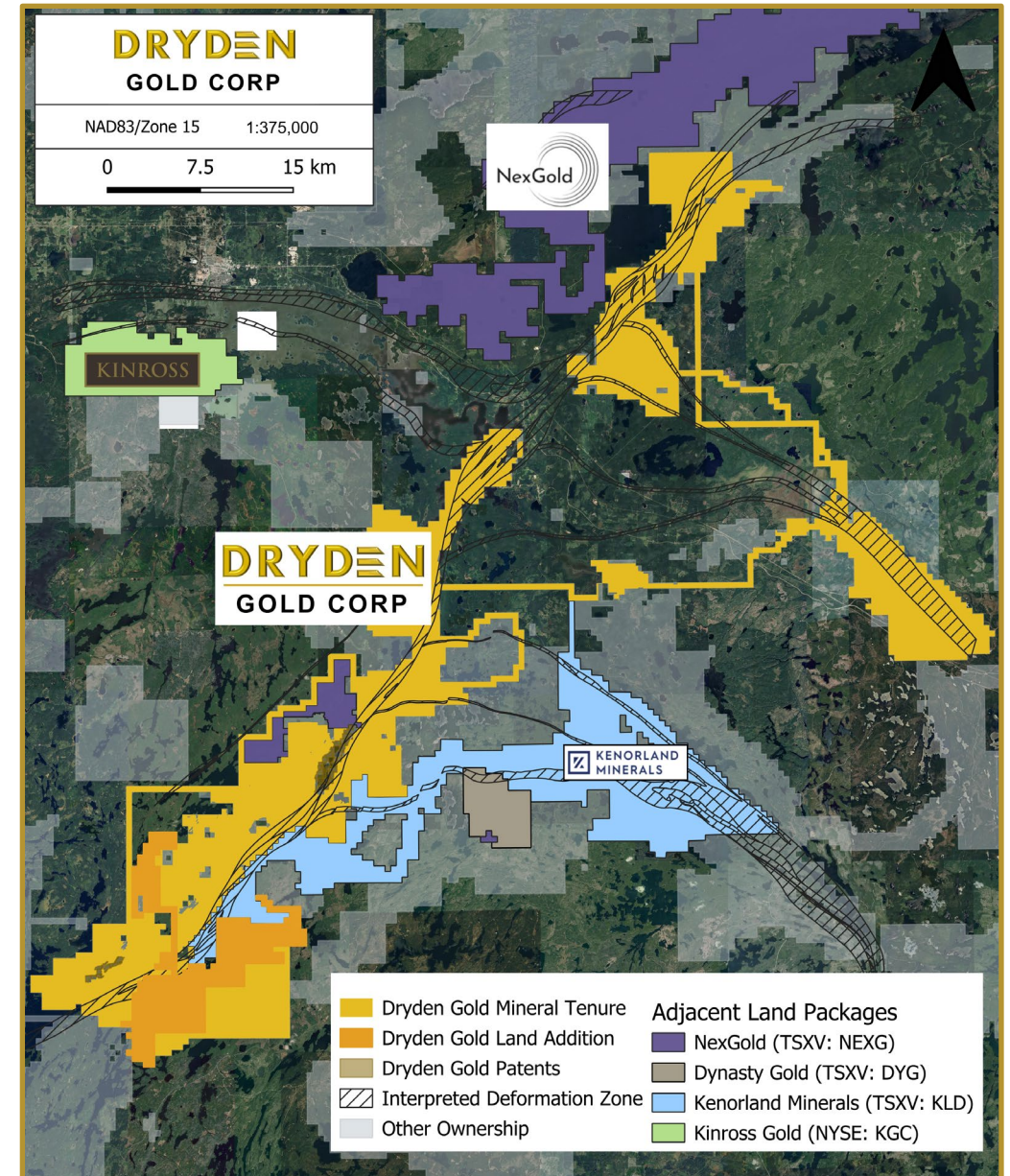


# Strategic Land Package

- ▲ Over 702 km<sup>2</sup> (70,250 hectares) consolidated by Dryden Gold Corp.
- ▲ Excellent infrastructure – Roads (Trans-Canada Hwy), power & labour.
- ▲ 50 km covering regional gold bearing MDdz structure (Manitou-Dinorwic deformation zone).
- ▲ Limited exploration - only **33,200 meters** of historic drilling district-wide at shallow depths.

## The Neighborhood

- ▲ **Kinross, NexGold Mining (*Treasury Metals*)**, Kenorland Minerals and **Dynasty Gold** active in the Dryden Gold District.
- ▲ **NexGold Mining** has defined a **3M ounce** low-grade resource in the Dryden Gold District.



# District Scale | Near Surface High-Grade Gold Across Property

## Gold Rock Camp Drill Highlights

- ▲ 30.72 g/t gold over 5.70 meters
- ▲ 15.17 g/t gold over 6.95 meters
- ▲ 15.40 g/t gold over 6.10 meters
- ▲ 26.11 g/t gold over 3.16 meters, including 79.80 g/t gold over 0.33 meters
- ▲ 3,497.0 g/t gold over 8.50 meters \*historic drill hole\* including 53,700 g/t gold over 0.55 meters

## Sherridon Drill Highlights

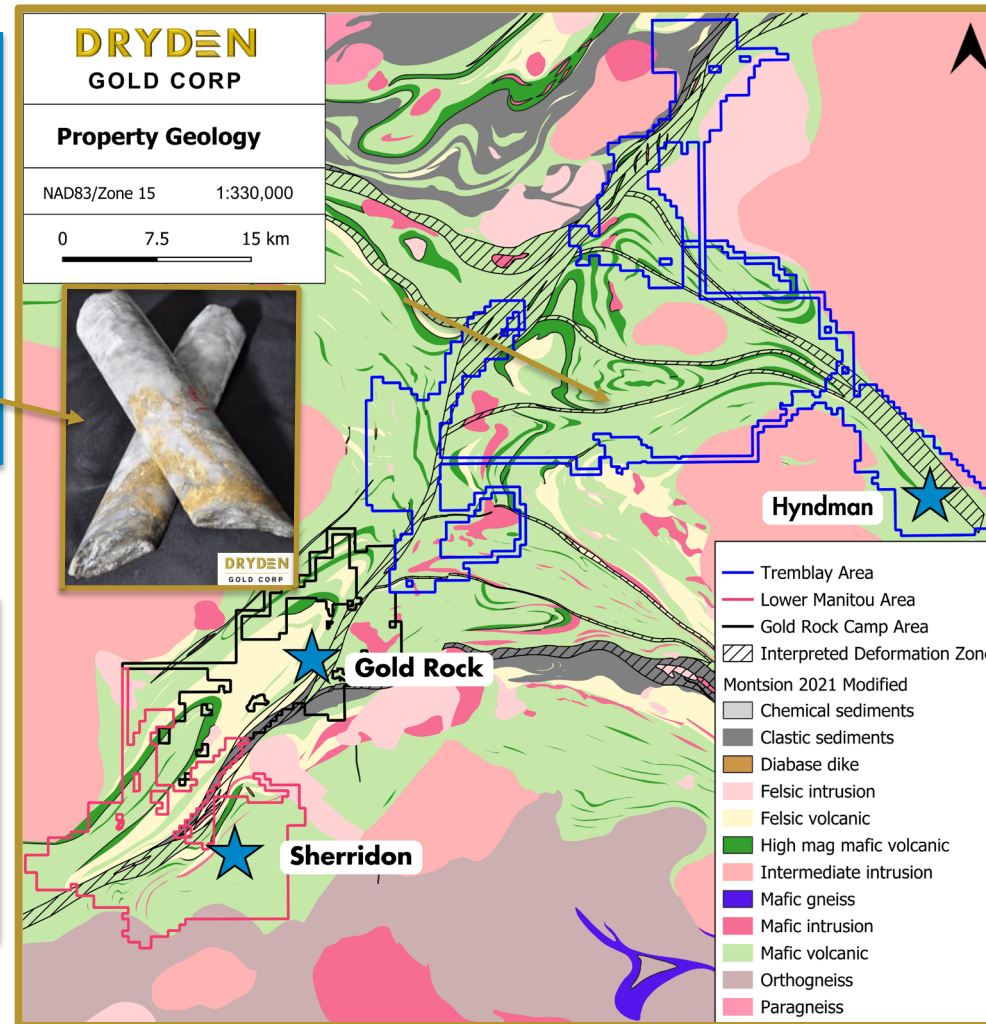
- ▲ 7.70 g/t gold over 3.00 meters \*historic drill hole\* including 46.00 g/t gold over 0.50 meters
- ▲ 15.40 g/t gold over 5.50 meters \*historic drill hole\* including 83.10 g/t gold over 1.00 meters

## Hyndman Field Samples

- ▲ 34.80 g/t gold grab sample 2024
- ▲ 13.00 g/t gold grab sample 2023
- ▲ 12.30 g/t gold grab sample 2023
- ▲ 10.90 g/t gold grab sample 2023
- ▲ 6.41 g/t gold grab sample 2024

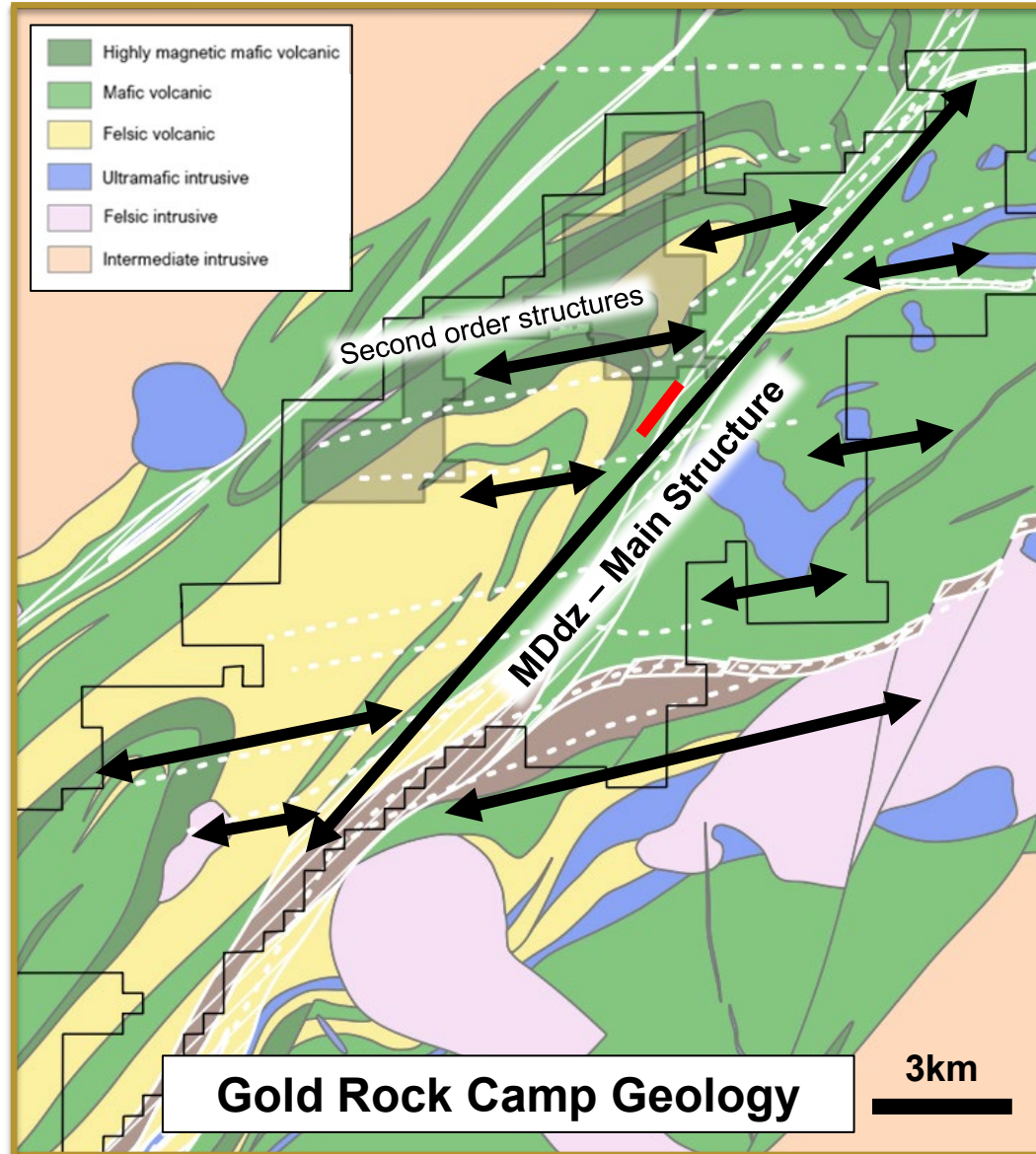
## Sherridon Field Samples

- ▲ 617.00 g/t gold grab sample (historic)
- ▲ 184.50 g/t gold grab sample (historic)
- ▲ 123.00 g/t gold grab sample (historic)
- ▲ 122.50 g/t gold grab sample (historic)

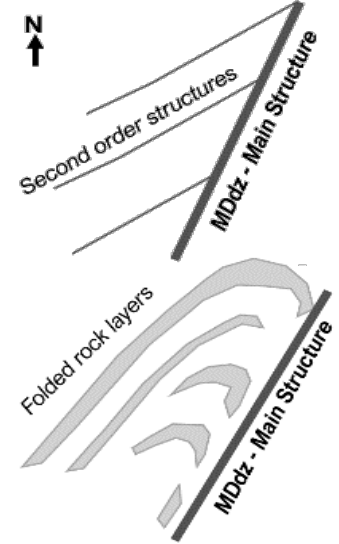


# Gold Rock Camp

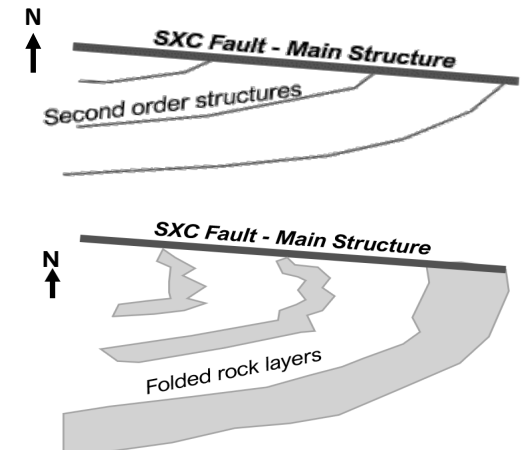
## Similar Geological Setting to Red Lake



### Dryden Gold Corp. Gold Rock Area Geology



### Red Lake Mine Geology



- ▲ Similar geological setting, rock types and dykes with regional folding.
  - ☑ *Confirmed – Through mapping, geophysics and drilling.*
  
- ▲ Structural geometry – gold bearing shear corridor with secondary mineralized splay structures & dykes.
  - ☑ *Confirmed – High-grade gold along 50 km deformation zone and confirmation that high-grade structures are related to secondary structures and dykes.*
  
- ▲ Favorable geological gold traps for high-grade shoots.
  - ☑ *Confirmed – Drilling known structural intersections, shear zones and folds intersected three new high-grade structures.*
  
- ▲ Near surface high-grade free gold in an Archean setting.
  - ☑ *Confirmed – Added new high-grade structures with shallow drilling.*

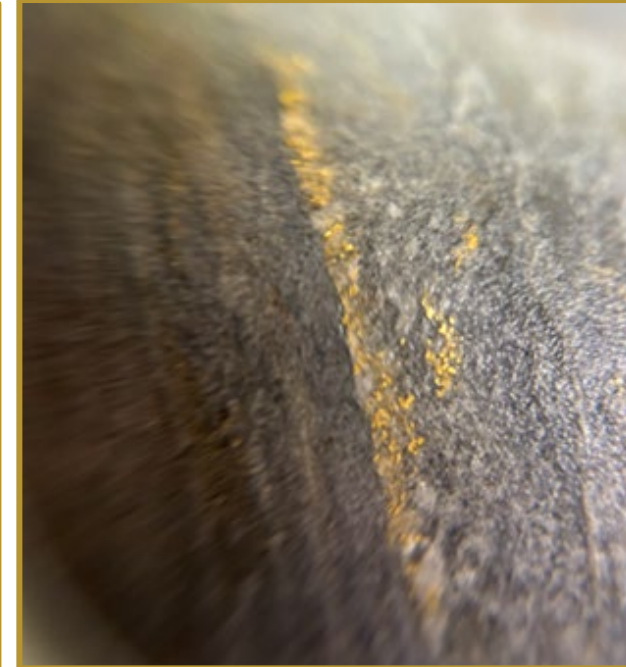
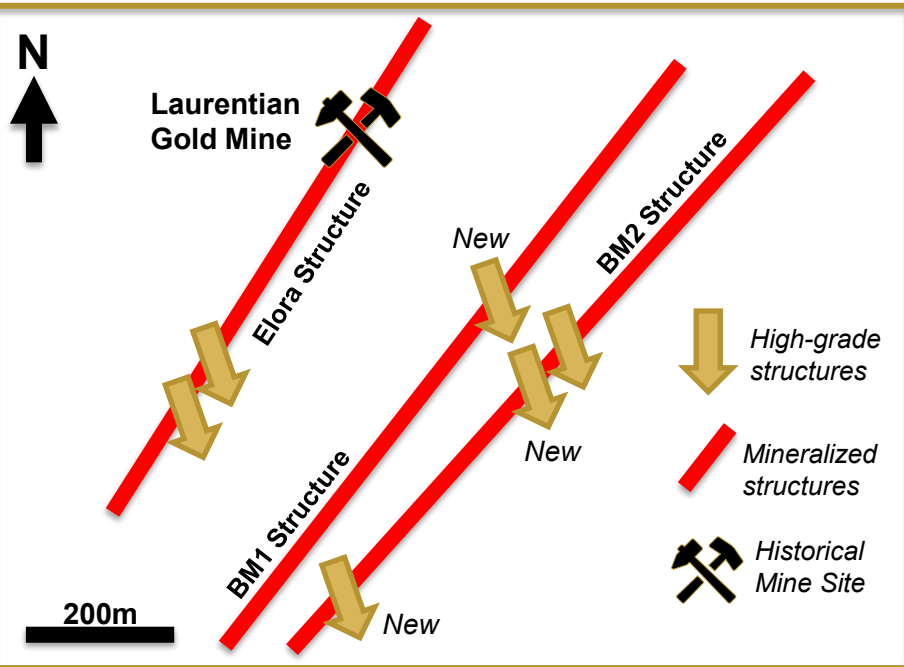
# 2024 Drill Program Summary | Goals and Objectives

1 EXPANDED MINERALIZED FOOTPRINT OF GOLD SYSTEM

2 CONFIRMED ORIENTATION, STRUCTURAL CONTROLS AND EXPANDED ELORA HIGH-GRADE STRUCTURE BM2 HISTORICALLY DELINEATED HIGH-GRADE STRUCTURE

3 DISCOVERED THREE NEW HIGH-GRADE STRUCTURES MINERALIZED FOOTPRINT OF GOLD SYSTEM

4 OUTLINED NEW HIGH-GRADE TARGETS ACROSS THE PROPERTY AS PART OF THE DISTRICT SCALE POTENTIAL





# Sample Highlights | High Grade Results



## Hyndman Property

2024 - **34.80 g/t gold** grab sample  
2023 - **13.00 g/t gold** grab sample  
2023 - **12.30 g/t gold** grab sample

**DRYDEN**

GOLD CORP

## Elora Gold System

**KW-24-017: 30.72 g/t gold over 5.70 meters,**  
*including 313.00 g/t gold over 0.55 meters*

**KW-24-008: 15.17 g/t gold over 6.95 meters,**  
*including 43.81 g/t gold over 1.42 meters and  
92.10 g/t gold over 0.30 meters*

**KW-24-024: 8.93 g/t gold over 12.45 meters,**  
*including 32.96 g/t gold over 2.73 meters*

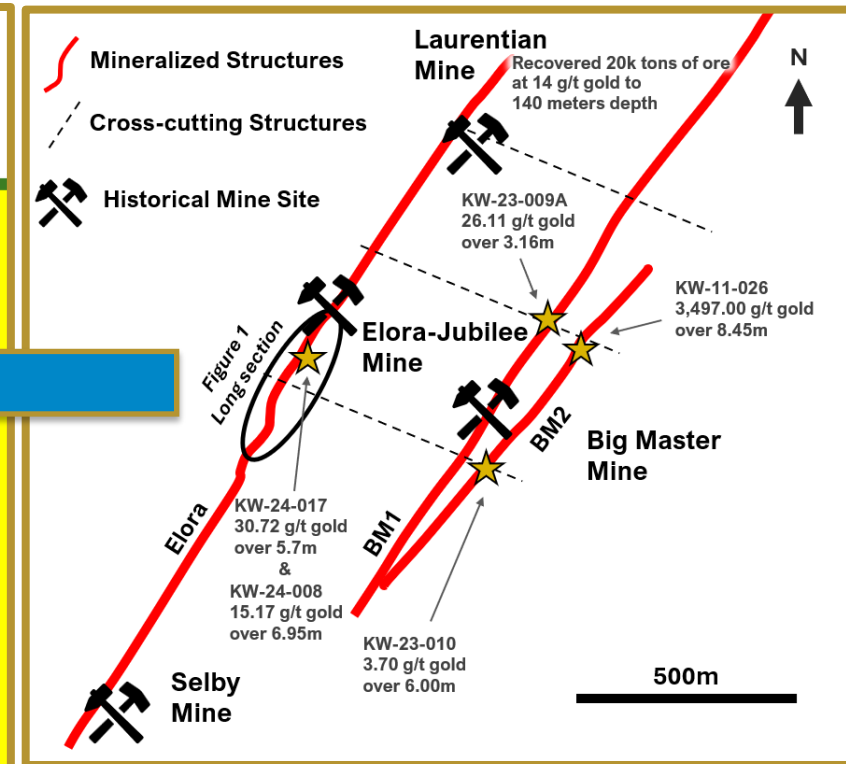
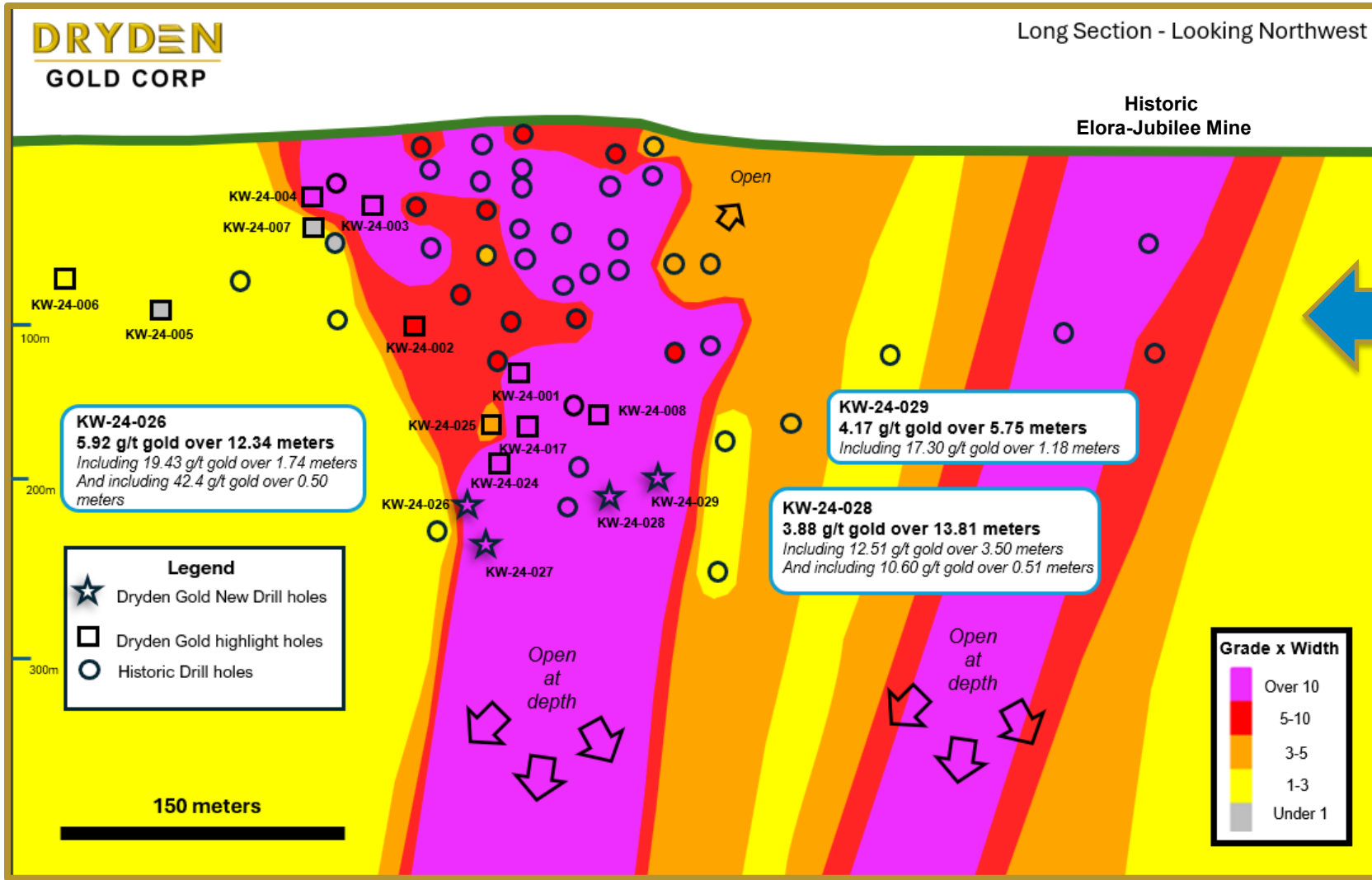
## Big Master Gold System

**KW-23-009A: 26.11 g/t gold over 3.16 meters,**  
*including 79.80 g/t gold over 0.33 meters*

**KW-23-018: 6.66 g/t gold over 4.30 meters,**  
*including 44.80 g/t gold over 0.27 meters*

**KW-23-016: 3.81 g/t gold over 7.00 meters,**  
*including 71.00 g/t gold over 0.30 meters*

# Elora Gold System | Expand Along Strike and at Depth



**Elora Gold System** hosted high-grade.

**Laurentian Gold Mine** with average grade of 14 g/t gold and mined to only 140 meters.

Figure 1- Long Section

# Gold Rock Camp Opportunities | Brownfields & Greenfields Targets



1 FOLLOW UP **DOWN PLUNGE** EXTENSION ON HIGH-GRADE STRUCTURES AT GOLD ROCK

2 FOLLOW UP ON THE **STRIKE** EXTENSION OF THE HIGH-GRADE STRUCTURES AT GOLD ROCK

3 FURTHER EXPLORE **NEW ANOMALIES** AT MOSHER BAY FAULT INTERSECTION TARGET

4 TEST **REGIONAL GEOPHYSICAL TARGETS** THROUGH MAPPING, PROSPECTING AND TILL SAMPLING

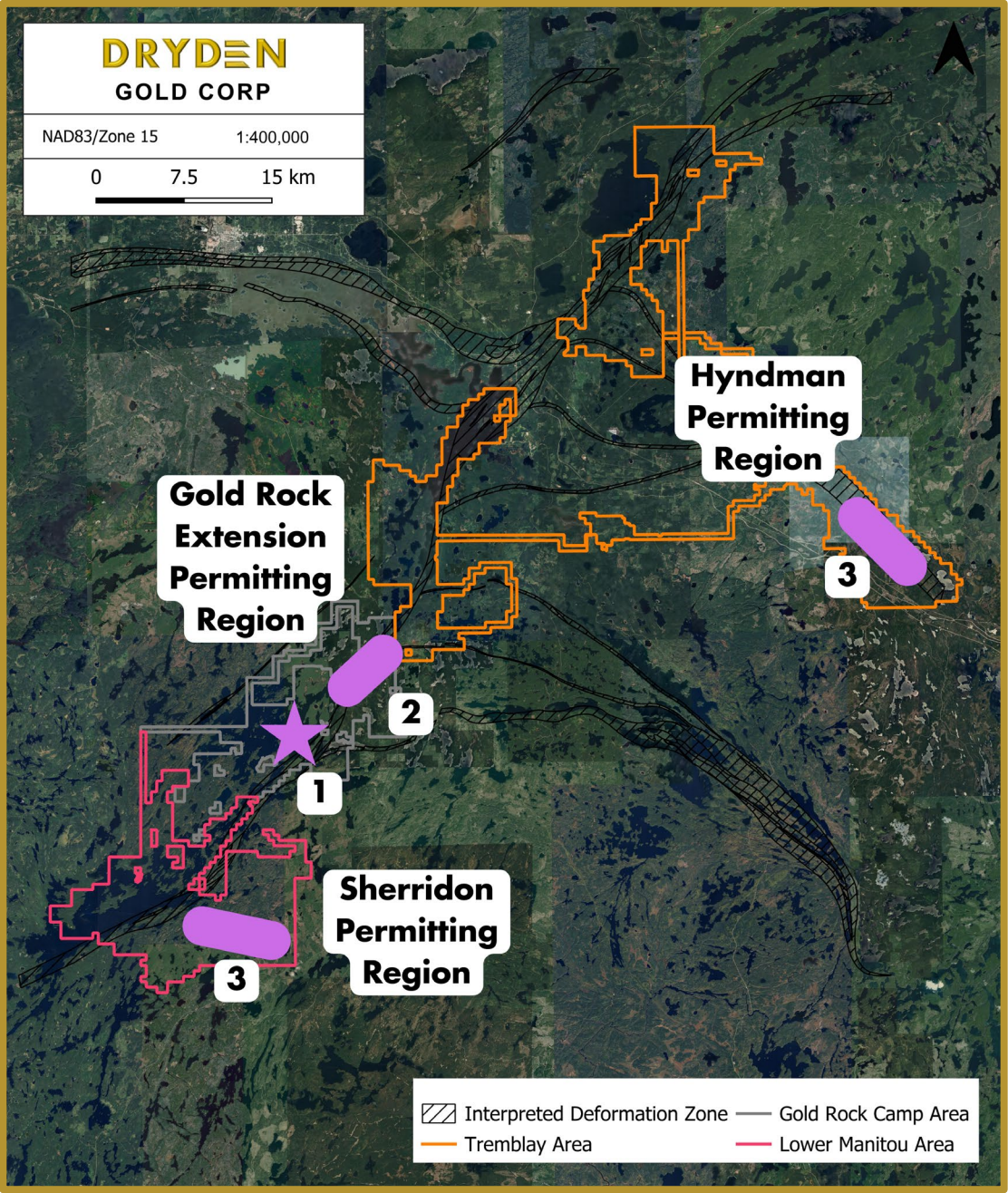


# 2025 Drill Program Objectives

1 EXPAND ON THE HIGH-GRADE STRUCTURE ON THE ELORA GOLD SYSTEM

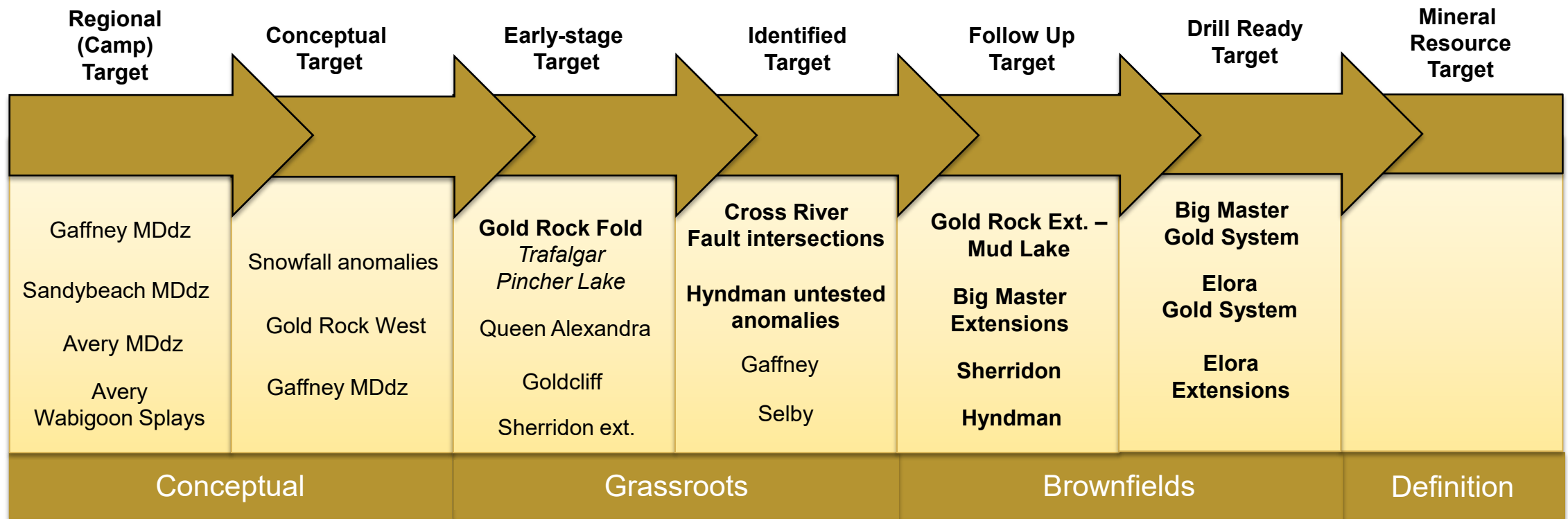
2 TEST NEW TARGETS ALONG STRIKE AND AT DEPTH AT GOLD ROCK

3 TEST HIGHLY PROSPECTIVE REGIONAL TARGETS



# Dryden Gold's Resource Pipeline

- ▲ 2025 Exploration Emphasis on **Gold Rock Camp** Targets.
- ▲ Several Regional targets at Identified and **Follow up** stages will be further worked on during 2025.



# Gold Rock Regional Exploration

- ▲ This area is hosted by mafic flows of the Pincher Group that were intruded by syn-deformational felsic dykes.
- ▲ The sinistral transpressive Manitou Dinorwic deformation zone (MDdz) is the main control on mineralization with gold primarily hosted in fracture-filling quartz veins related to brittle-ductile deformation.

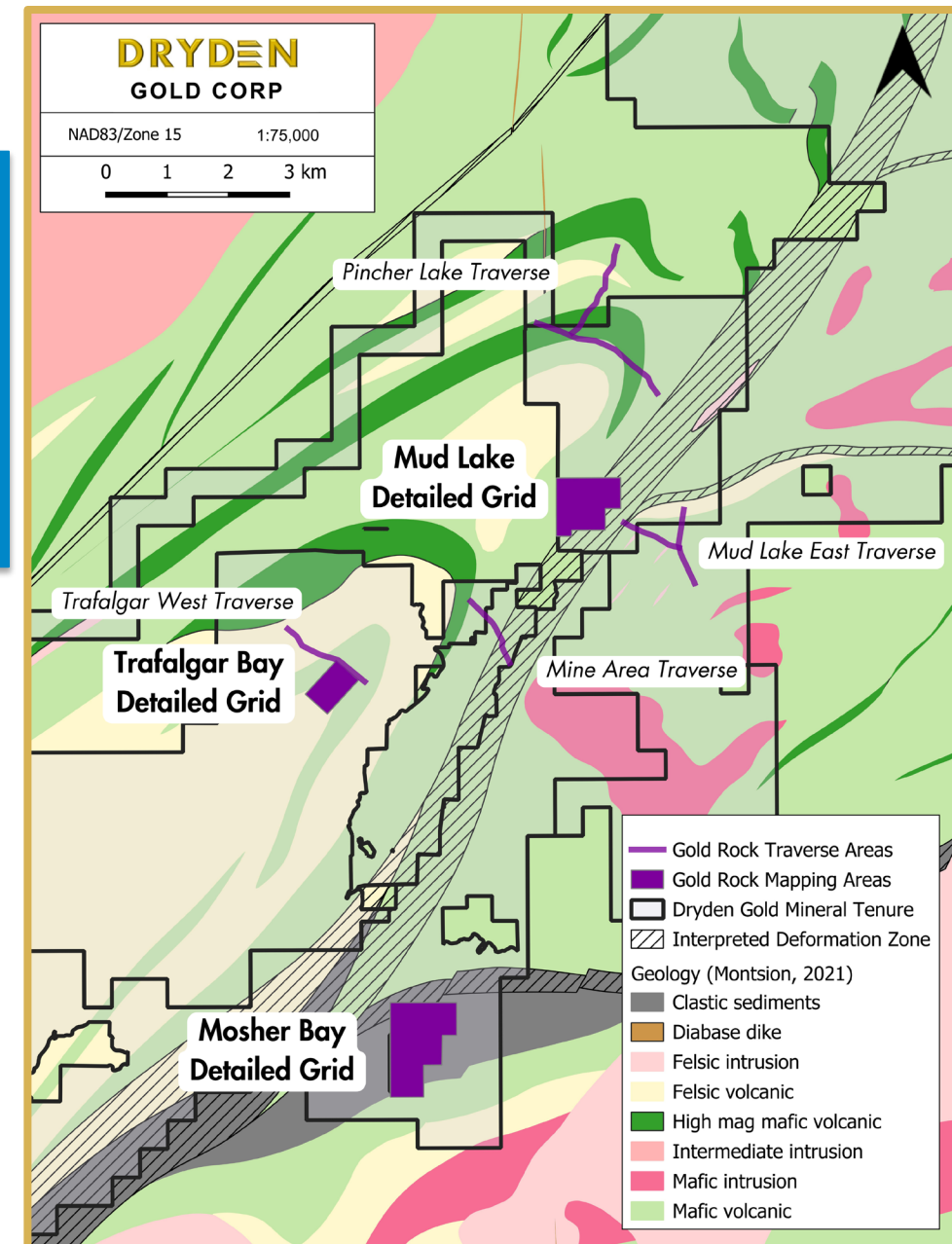
- ▲ Mapping during the summer 2024 field program focused on **three** detailed areas of the property:

- 1) **Mud Lake**
- 2) **Mosher Bay**
- 3) **Trafalgar Bay**

- ➔ **Mud Lake** is the potential along-strike extension of the Elora and Big Master zones.
- ➔ **Mosher Bay** is found at the intersection of the MDdz ( $D_2$ ) and MBWdz ( $D_1$ ) within a Timiskaming sediment unit.
- ➔ **Trafalgar Bay** fold hinge which cuts across a mafic/intermediate contact adjacent to a magnetic high.

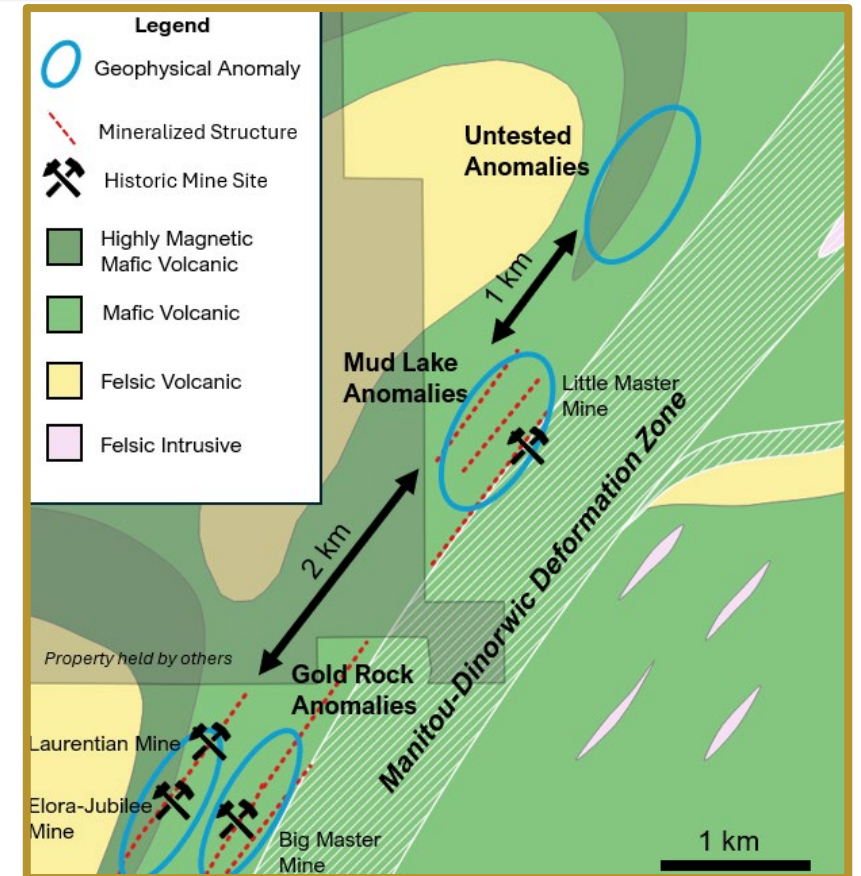
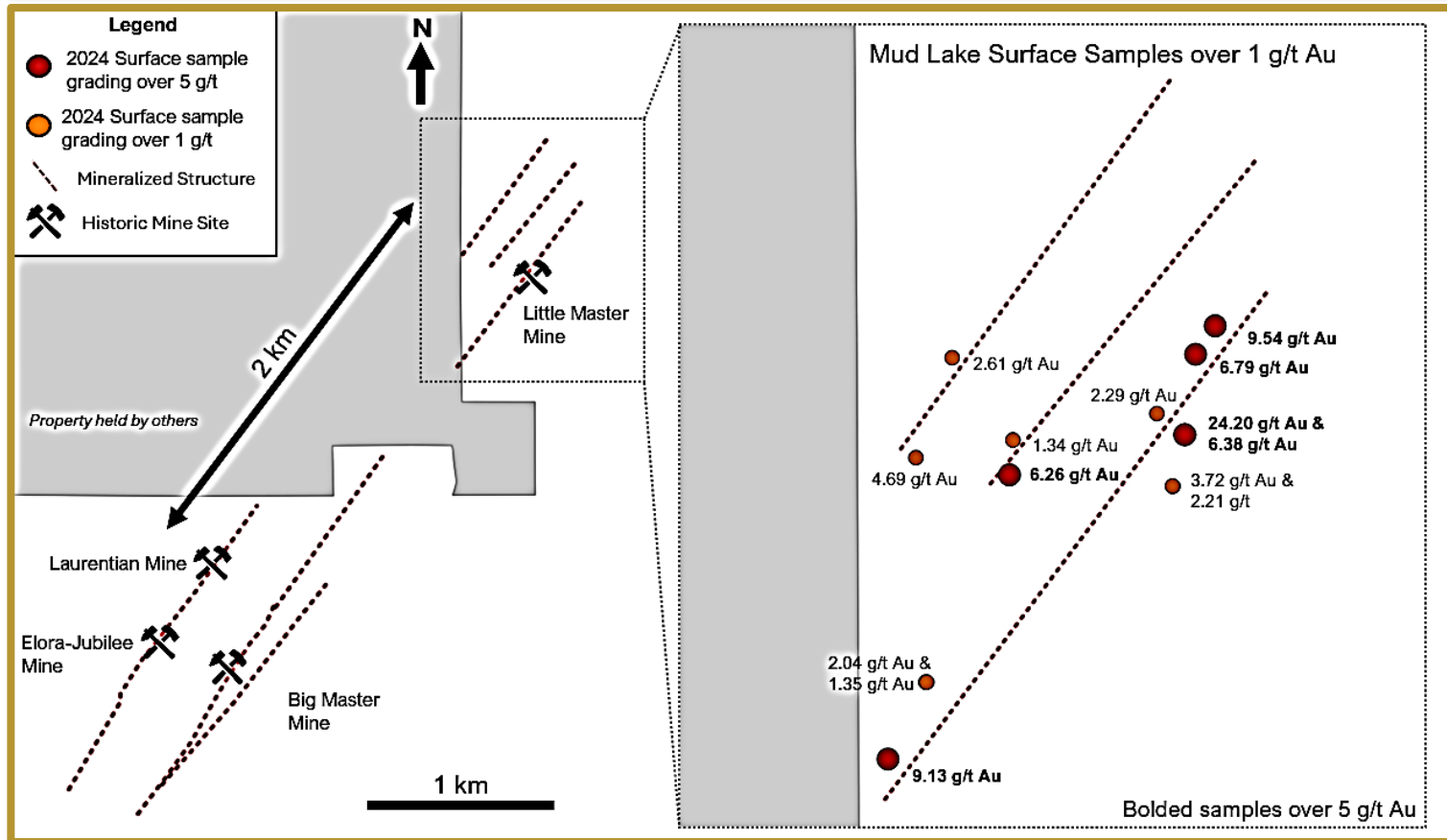
**DRYDEN**

GOLD CORP



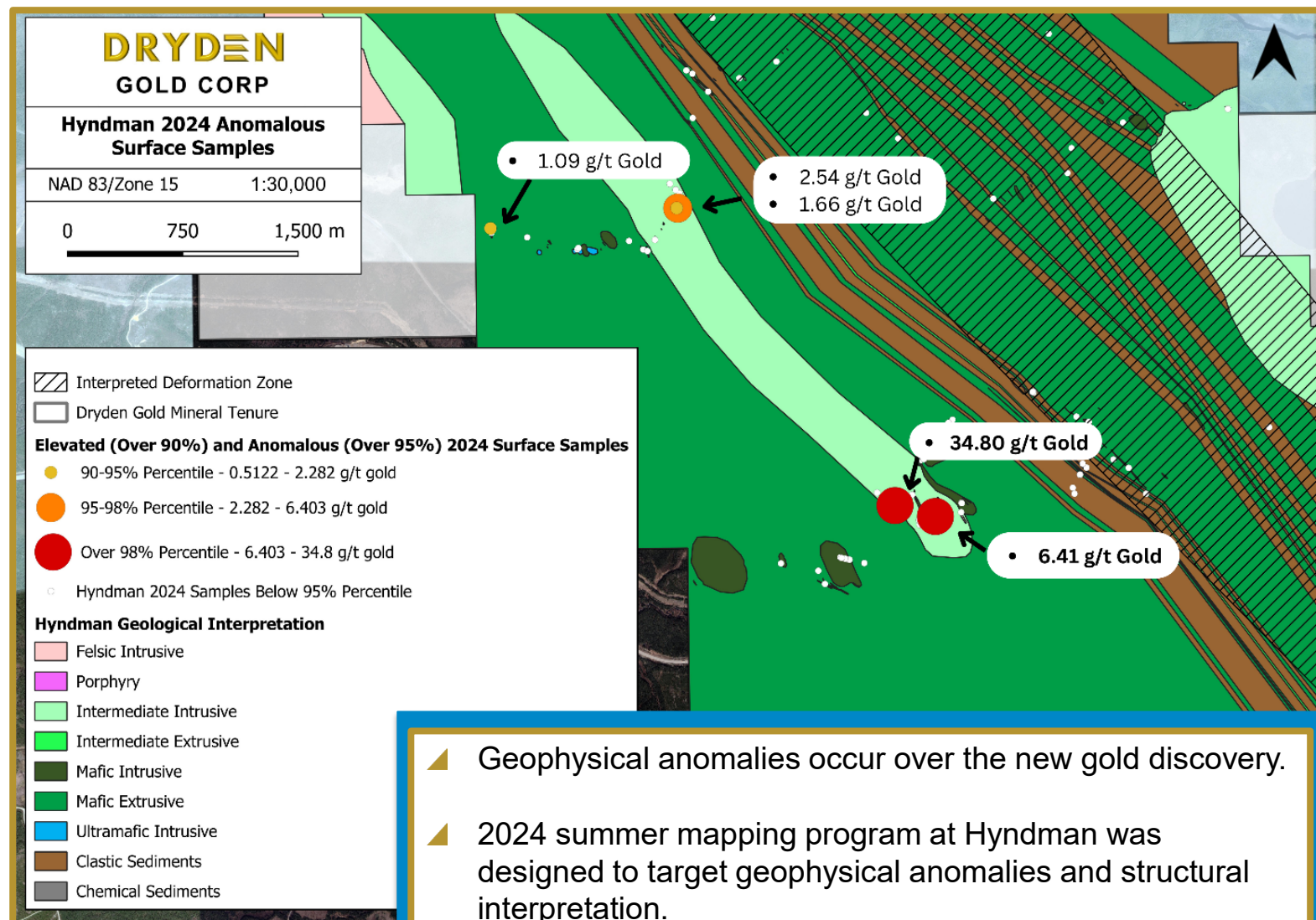
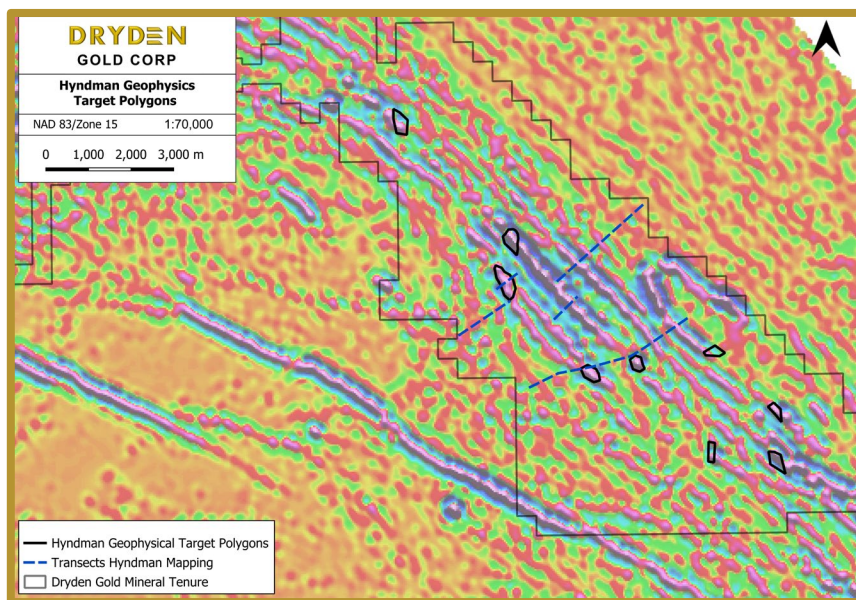
# Gold Rock – Mud Lake Extension

▲ 2024 surface samples returning multiple gold values over 5 g/t (see figures below).



# Hyndman 2024 Results

- 2023 reconnaissance program discovered new gold showing with 4 samples returning gold values higher than **10.00 g/t gold**.
- 2024 Geophysics study highlighted several more geophysical anomaly targets, similar to the new discovery.





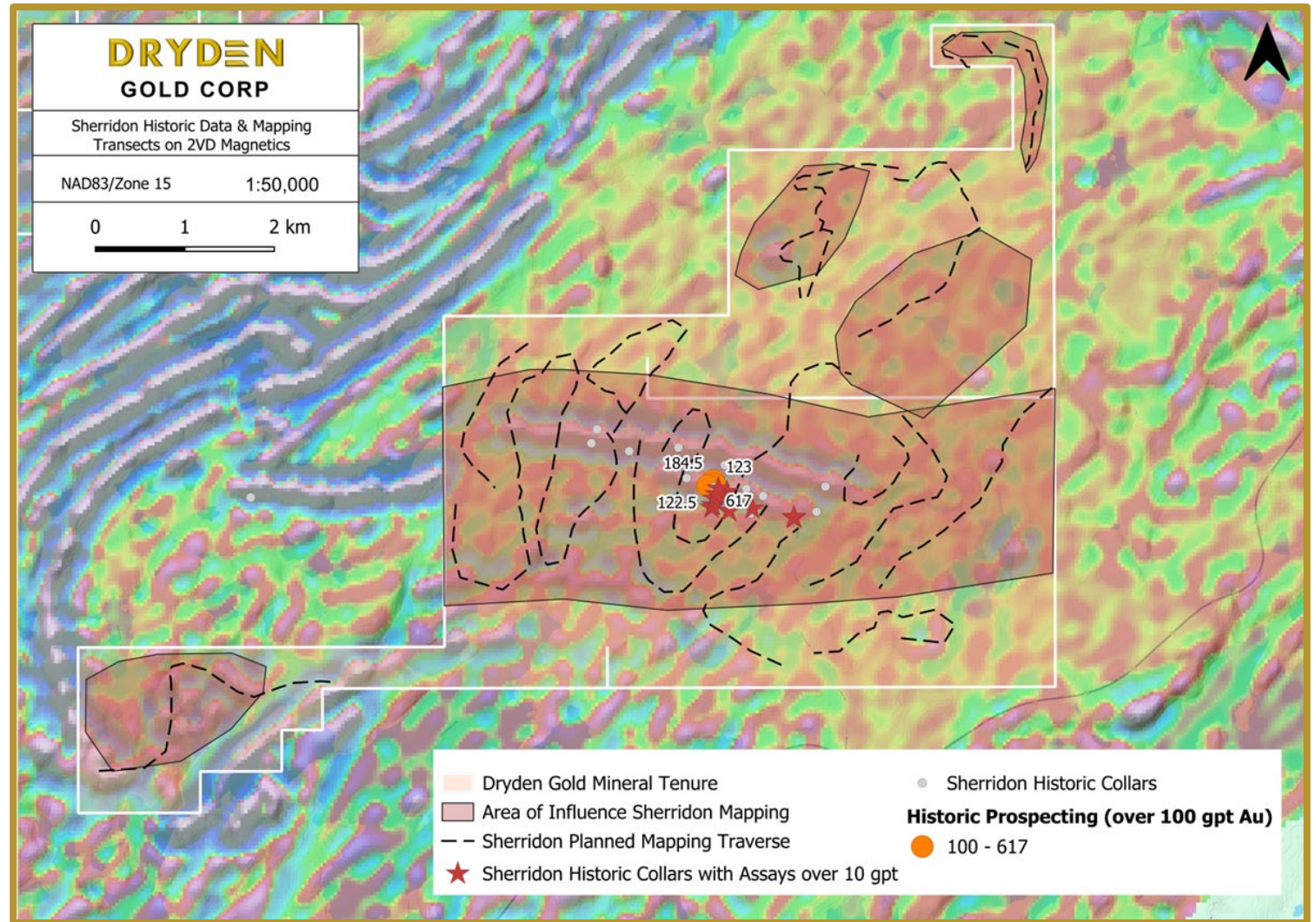
# Sherridon Regional Exploration

- ▲ Historical data compilation highlighted high-grade historical surface samples and drill results.

## ▲ Highlights:

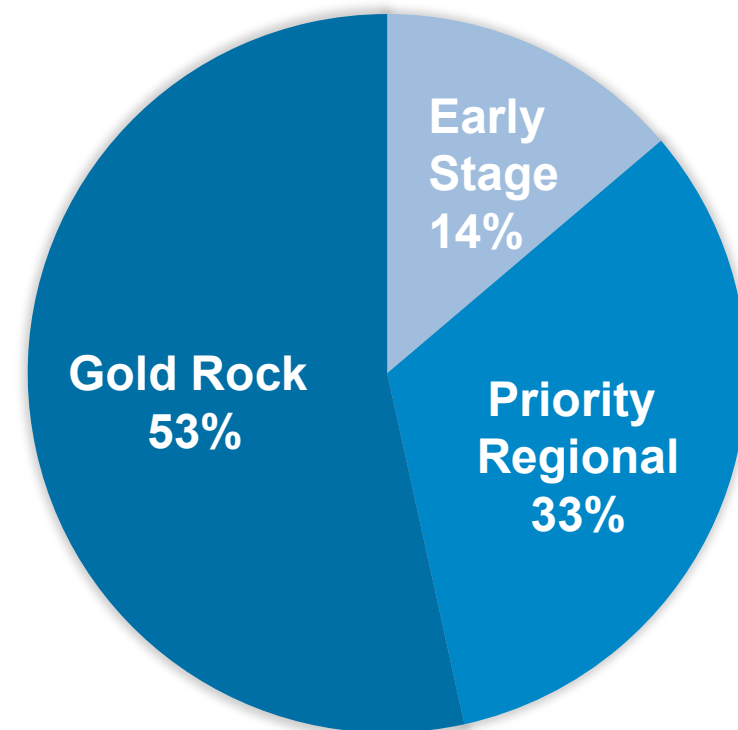
- ▲ **617.00 g/t gold** surface sample
- ▲ Several surface samples over **100.00 g/t gold**
- ▲ **15.40 g/t gold** over 5.50 meters including **83.70 g/t gold** over 1.00 meters in drill hole SH-12-25

- ▲ Mineralization related to geophysical anomaly – magnetic high.
- ▲ 2024 mapping program to get a better understanding of the stratigraphic layers, geophysical anomalies and structural setting.



# Exploration Budget 2025 | Use of Proceeds – \$5.8M

Item	Property	Cost (\$CAD)
LiDAR	All properties	\$100,000
Till/Soil Geochemical Survey	All properties	\$700,000
Geophysics 3D Inversion	Priority Regional Targets <i>Sherridon, Gold Rock expanded, other</i>	\$250,000
Mapping & Sampling	Priority Regional Targets <i>Gold Rock, Hyndman, Sherridon</i>	\$700,000
Channel Sampling	Priority Regional Targets <i>Gold Rock, Hyndman, Sherridon</i>	\$150,000
Drilling	Gold Rock	\$1,500,000
Drilling	Gold Rock Extension	\$1,600,000
Drilling	Priority Regional Targets <i>Gold Rock, Hyndman, Sherridon</i>	\$800,000



# 2025 Outlook

## Start of 2025



Interpreting New Data

Feb 10 - Winter Drill Campaign

3D Geophysics Studies

Spring Drill Campaign

## Close of 2025



Summer Field Campaign

Fall Drill Campaign

Till/Soil Sampling

Channel Sampling

Mapping and Prospecting

# Why Dryden Gold?

- ▲ The Property
- ▲ The Team
- ▲ The High-Grade Gold
- ▲ The Geology
- ▲ The Jurisdiction
- ▲ The Infrastructure
- ▲ The Shareholders

## The Next Red Lake?





# DRYDEN

## GOLD CORP

TSXV: DRY | OTCQB: DRYGF  
DRYDENGOLD.COM

### Contact:

**Trey Wasser** CEO & Director  
+1 (940) 368-8337  
twasser@drydengold.com

**Maura Kolb** President & QP  
+1 (807) 632-2368  
mjkolb@drydengold.com

