



DAKOTA GOLD

Revitalizing The Homestake District Of South Dakota

NYSE American: DC

Investor Presentation | September 2024



dakotagoldcorp.com

Dakota Gold is a South Dakota-based, responsible gold exploration and development company with a specific focus on revitalizing the Homestake District in Lead, South Dakota.

Disclaimer

Forward-Looking Statements

This communication contains forward-looking statements within the meaning of Section 27A of the Securities Act of 1933, as amended, and Section 21E of the Securities Exchange Act of 1934, as amended. When used in this presentation, the words “plan,” “target,” “anticipate,” “believe,” “estimate,” “intend,” “potential,” “will” and “expect” and similar expressions are intended to identify such forward-looking statements. Any express or implied statements contained in this announcement that are not statements of historical fact may be deemed to be forward-looking statements, including, without limitation: our expectations regarding the drilling to be completed in 2024 and 2025; our expectations for the improvement and growth of the mineral resources; the high grade potential of the drilling completed after the effective date of the Initial Assessment; and the timing for any updated Initial Assessments to be released in 2025 or thereafter. These forward-looking statements are based on assumptions and expectations that may not be realized and are inherently subject to numerous risks and uncertainties, which could cause actual results to differ materially from these statements. These risks and uncertainties include, among others: the execution and timing of our planned exploration activities; our use and evaluation of historic data; our ability to achieve our strategic goals; the state of the economy and financial markets generally and the effect on our industry; and the market for our common stock. The foregoing list is not exhaustive. For additional information regarding factors that may cause actual results to differ materially from those indicated in our forward-looking statements, we refer you to the risk factors included in Item 1A of the Company’s Annual Report on Form 10-K for the fiscal year ended December 31, 2023, as updated by annual, quarterly and current reports that we file with the SEC, which are available at www.sec.gov. We caution investors not to place undue reliance on the forward-looking statements contained in this communication. These statements speak only as of the date of this communication, and we undertake no obligation to update or revise these statements, whether as a result of new information, future events.

All references to “\$” in this presentation are to U.S. dollars unless otherwise stated.





Maitland Gold Project

- 2,112 mineral acres
- Private Land
- Contiguous with Homestake Mine
- Two Discoveries:
 - JB Gold Zone Homestake Mine-style gold mineralization (iron formation)
 - Unionville Zone shallow Tertiary epithermal gold mineralization



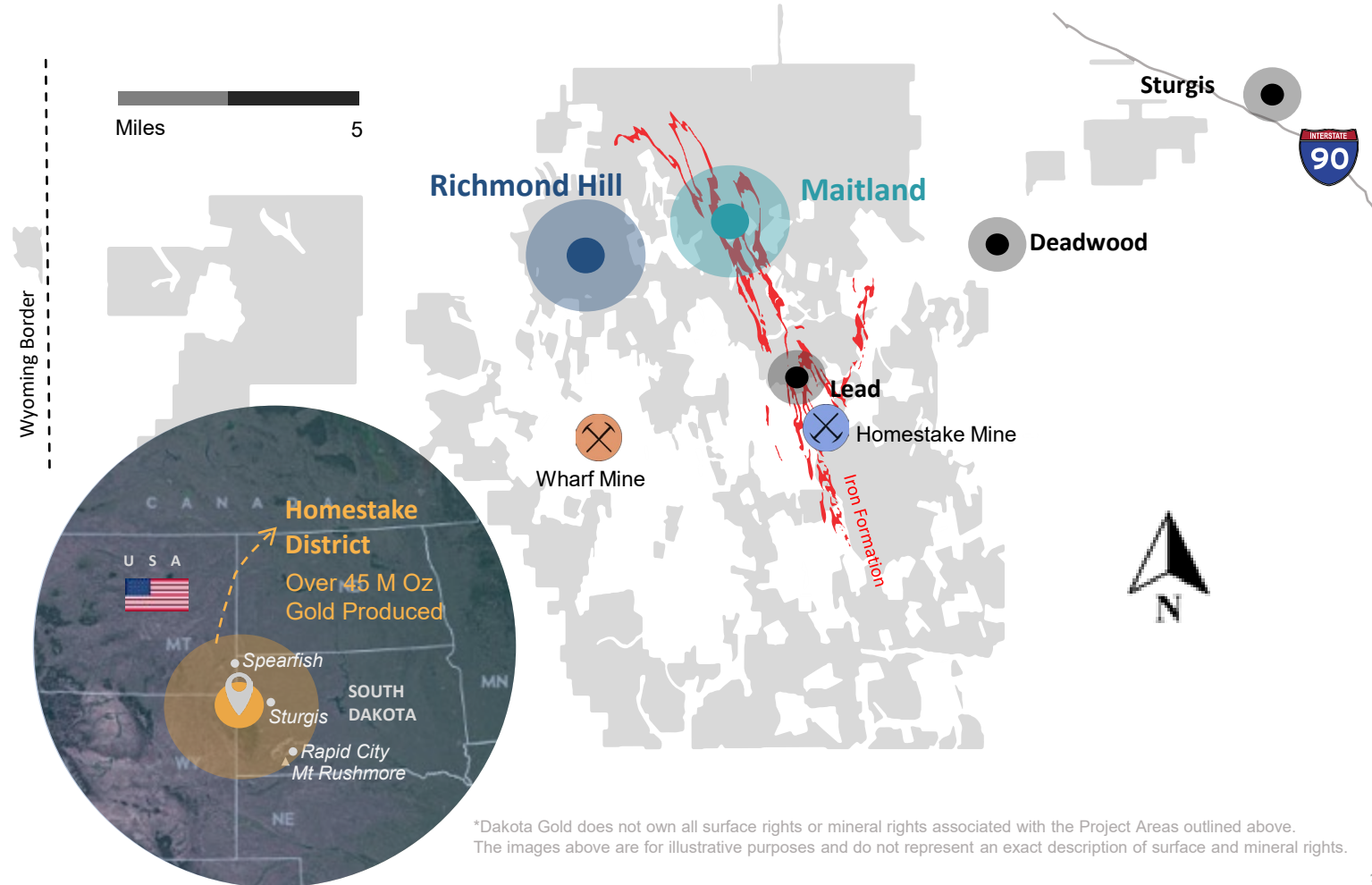
Richmond Hill Gold Project

- 2,749 mineral acres
- Private Land
- Adjacent to Wharf Mine
- Shallow mineralization: oxide, mix and hypogene
- S-K 1300 Maiden Resource
 - 1.33 M oz of Indicated Gold
 - 1.13 M oz of Inferred Gold

Homestake District: New Opportunities

Legend - Homestake District and Key Projects

- Dakota Gold Land Package
- Iron Formation
- Maitland – Private Land
- Richmond Hill - Private Land
- Homestake - ~40 M Oz Gold Historic Production
- Wharf – 4 M Oz Gold Produced Active Mine



*Dakota Gold does not own all surface rights or mineral rights associated with the Project Areas outlined above. The images above are for illustrative purposes and do not represent an exact description of surface and mineral rights.



Long Section – Homestake Corridor

Maitland Gold Project
Contiguous to the Historic
Homestake Mine

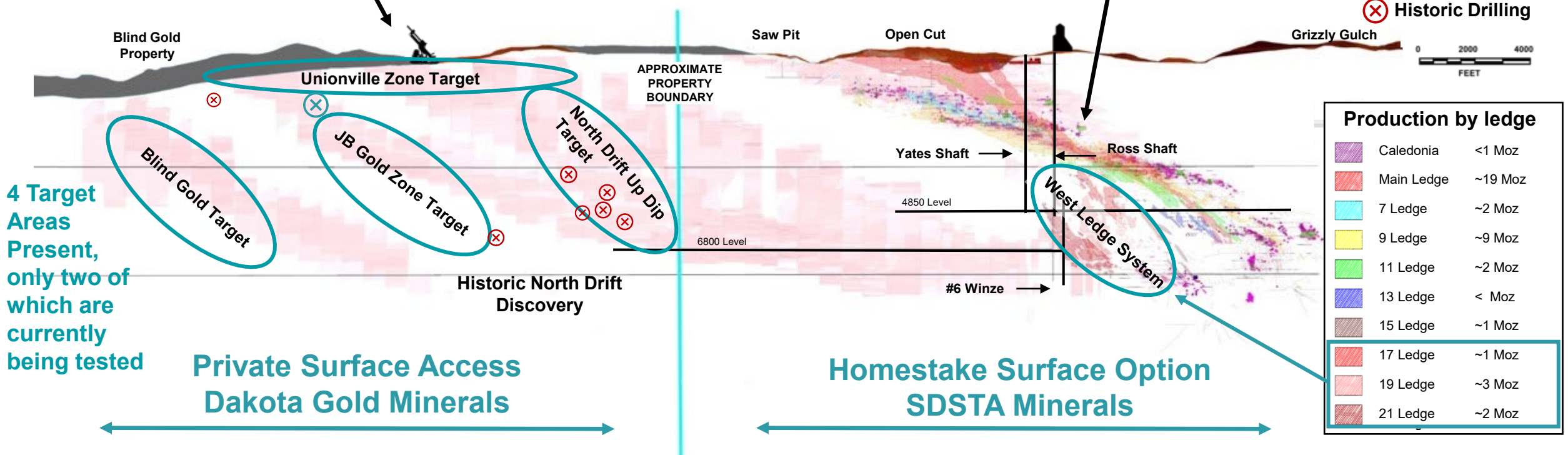
NW

SE

MAITLAND PROPERTY
Potential For New Mine Opportunities

FORMER HOMESTAKE MINE
40 Million Ounces Gold Produced

Maitland is 3.4 miles north of Homestake Mine Open Cut



4 Target Areas Present, only two of which are currently being tested

Private Surface Access
Dakota Gold Minerals

Homestake Surface Option
SDSTA Minerals

Homestake Iron Formation

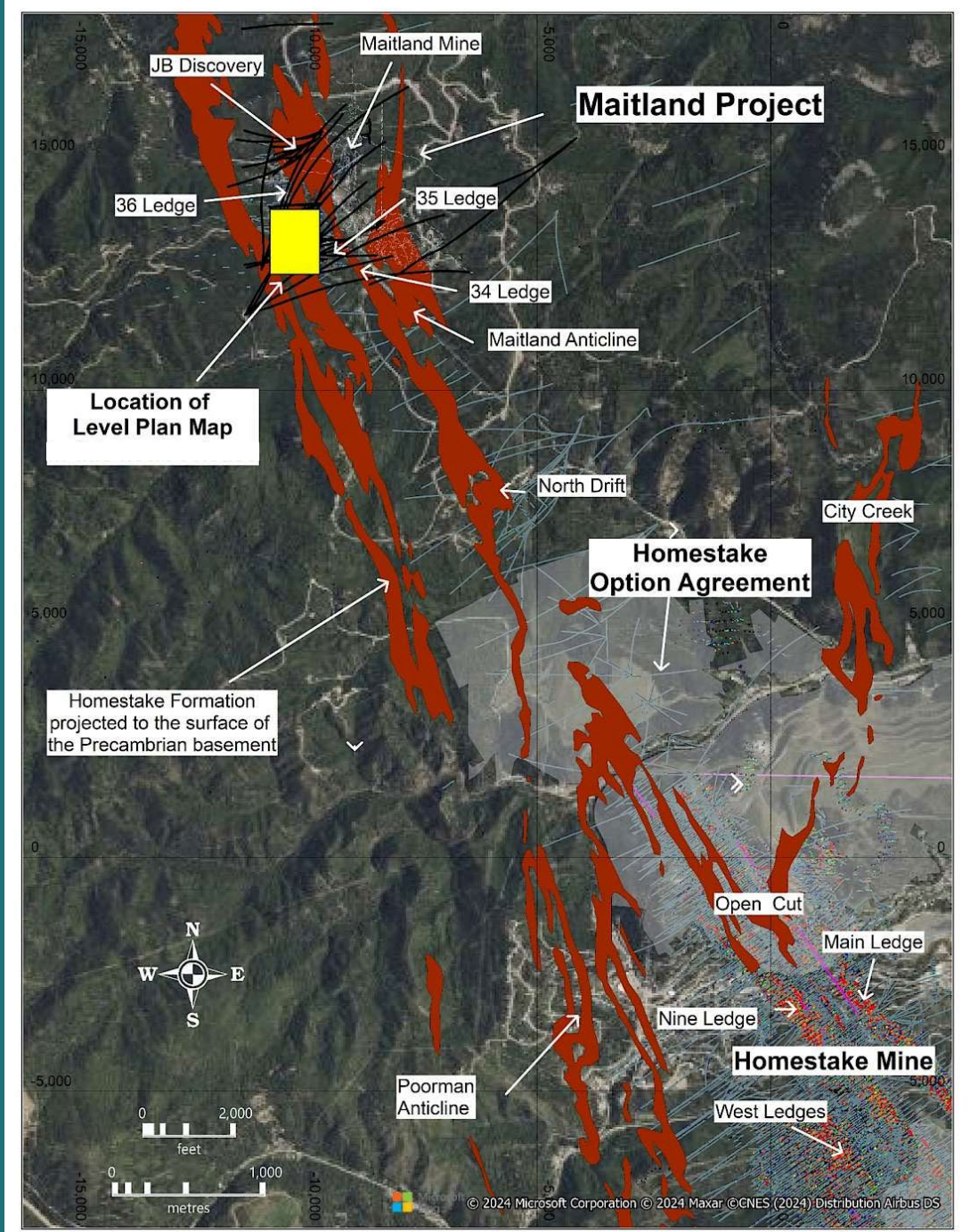
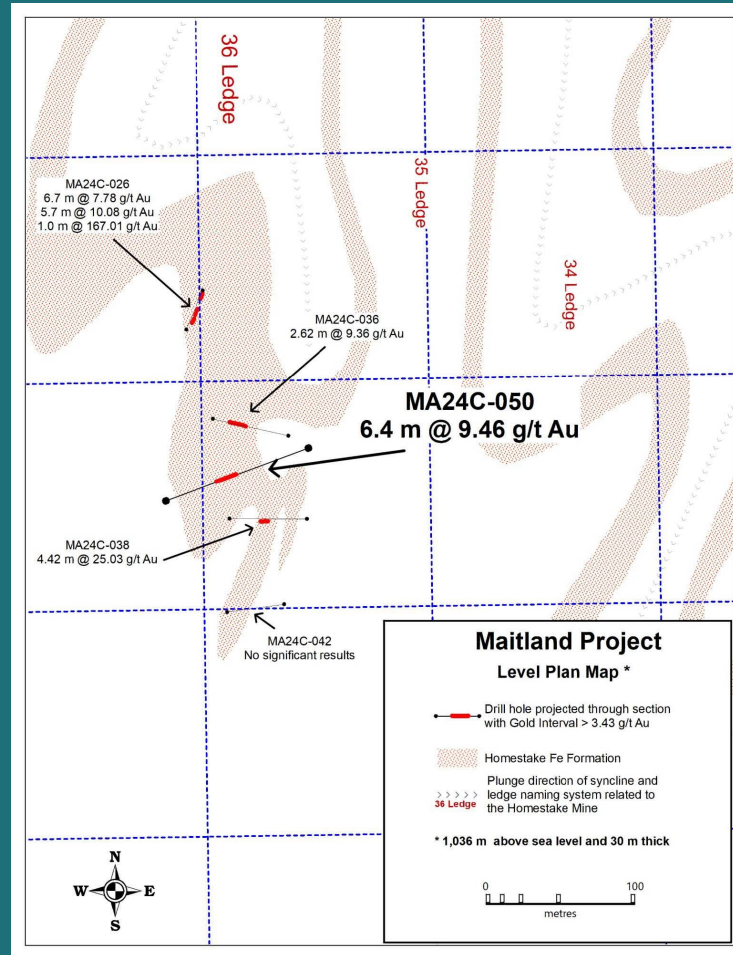
⊗ Dakota Gold Drilling
⊗ Historic Drilling

Production by ledge	
Caledonia	<1 Moz
Main Ledge	~19 Moz
7 Ledge	~2 Moz
9 Ledge	~9 Moz
11 Ledge	~2 Moz
13 Ledge	< Moz
15 Ledge	~1 Moz
17 Ledge	~1 Moz
19 Ledge	~3 Moz
21 Ledge	~2 Moz

Maitland Gold Project

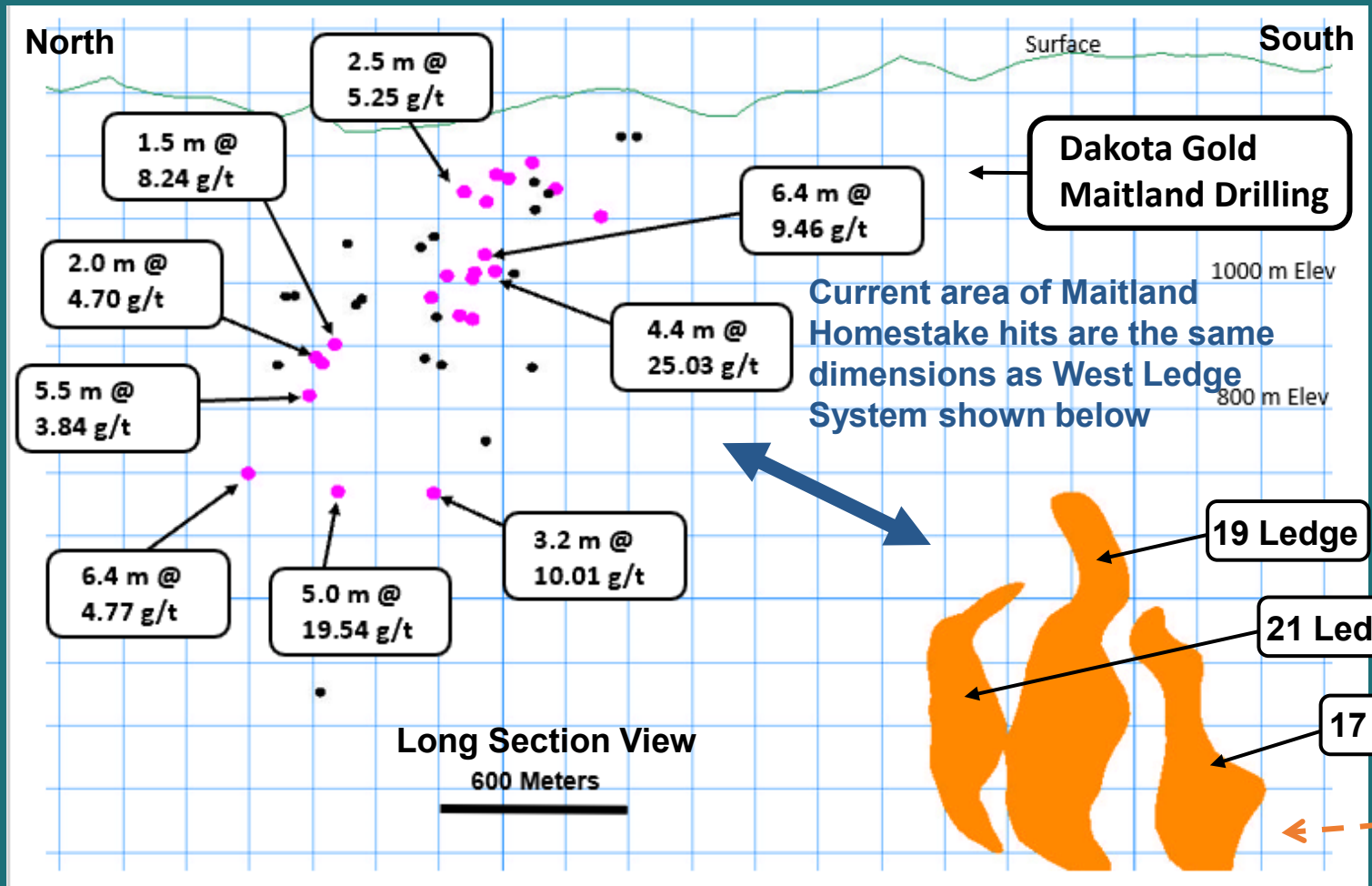
– JB Gold Zone

- Three distinct ledges (34, 35, 36) discovered at Maitland in the JB Gold Zone
- The width, grade and stratigraphy of intercepts identified are analogous to the gold mineralization found in the West Ledge System at the historic Homestake Mine
- The West Ledge System produced 6 million ounces of gold



Maitland – JB Gold Zone

Analogous to West Ledge System



AVERAGE GOLD GRADE

- JB Gold Zone: 10.76 g/t Au
- West Ledge System: 11.63 g/t Au

AVERAGE THICKNESS

- JB Gold Zone: 4.0 meters
- West Ledge System: 6.1 meters

Homestake Mine West Ledge System Outline Drawn to Scale for Comparison to Maitland Homestake Drill Intercepts

Mineralized Intercept (not always True Thickness)

Un-Mineralized Intercept

Homestake Mine - West Ledge System Outline

- 2.74 g/t Gold Cut-off
- Total of 6 million ounces of gold produced from West Ledge

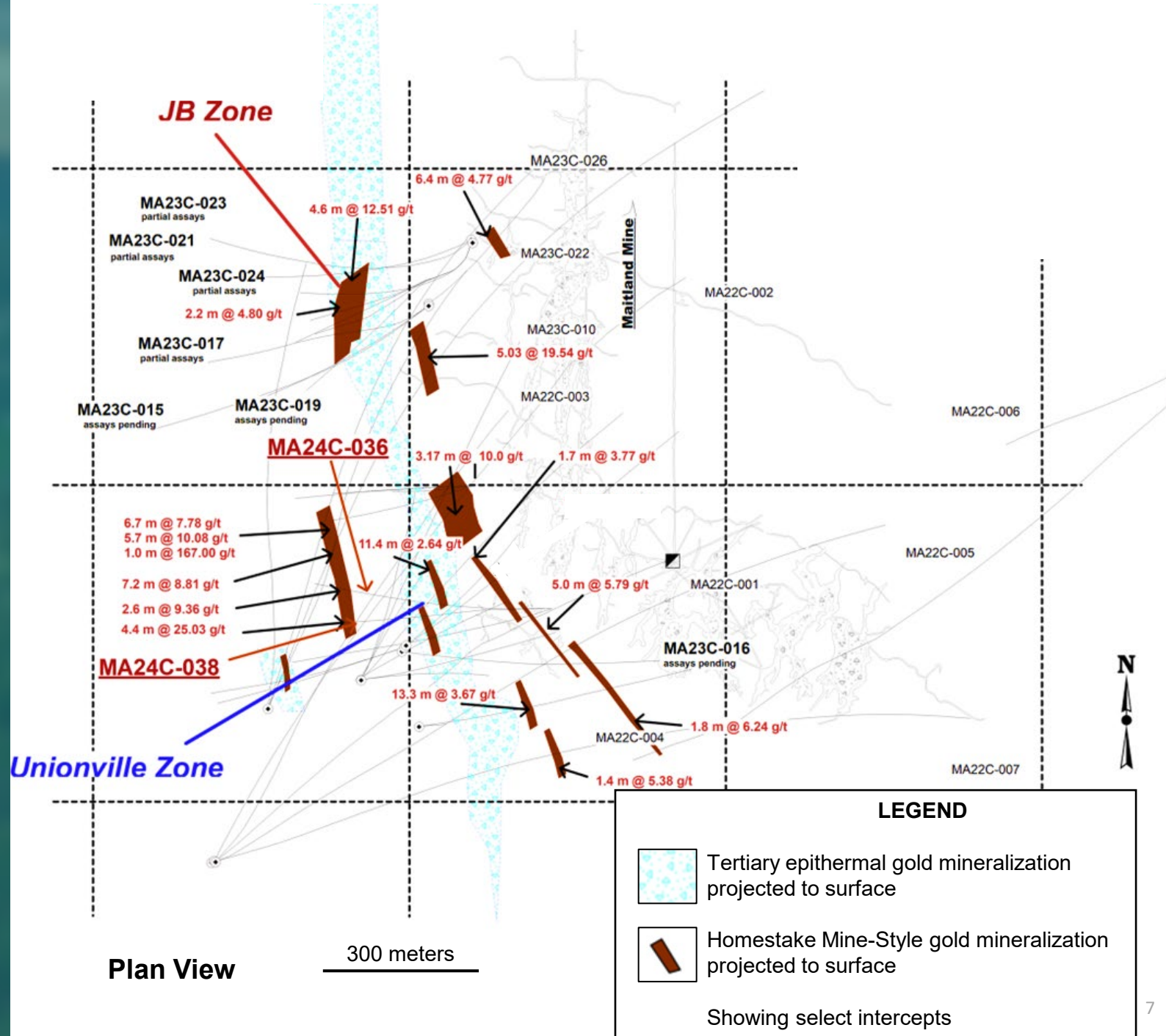


Maitland Gold Project



James Berry
Vice President
Exploration

“The opportunity we see at Maitland is unique in that we have the possibility to access two distinct types of mineralization.”



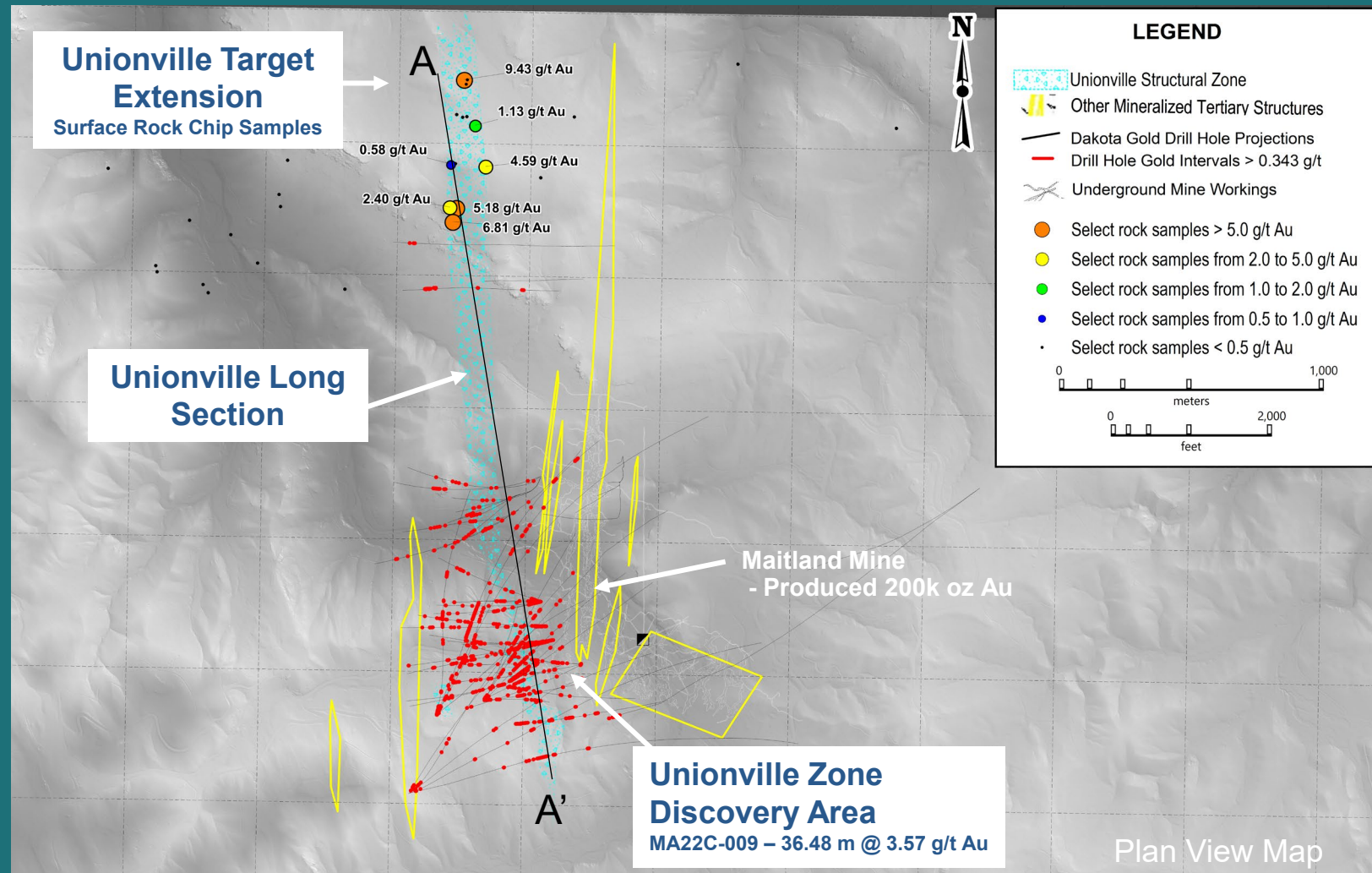
Maitland – Unionville Zone

- Exploration drill results to date show a near surface Tertiary epithermal gold system opportunity that could expedite development of the deeper JB Gold Zone below.
- Unionville Target Extension Strike length could extend to over 3,000 meters to the North and is open to the South.
- Parallel mineralized Tertiary structures including historic Maitland Mine shown on the map have yet to be drill tested.



James Berry
Vice President
Exploration

“Tertiary mineralization was untested at the historic Homestake Mine and it represents an exciting new opportunity to explore further at Maitland.”

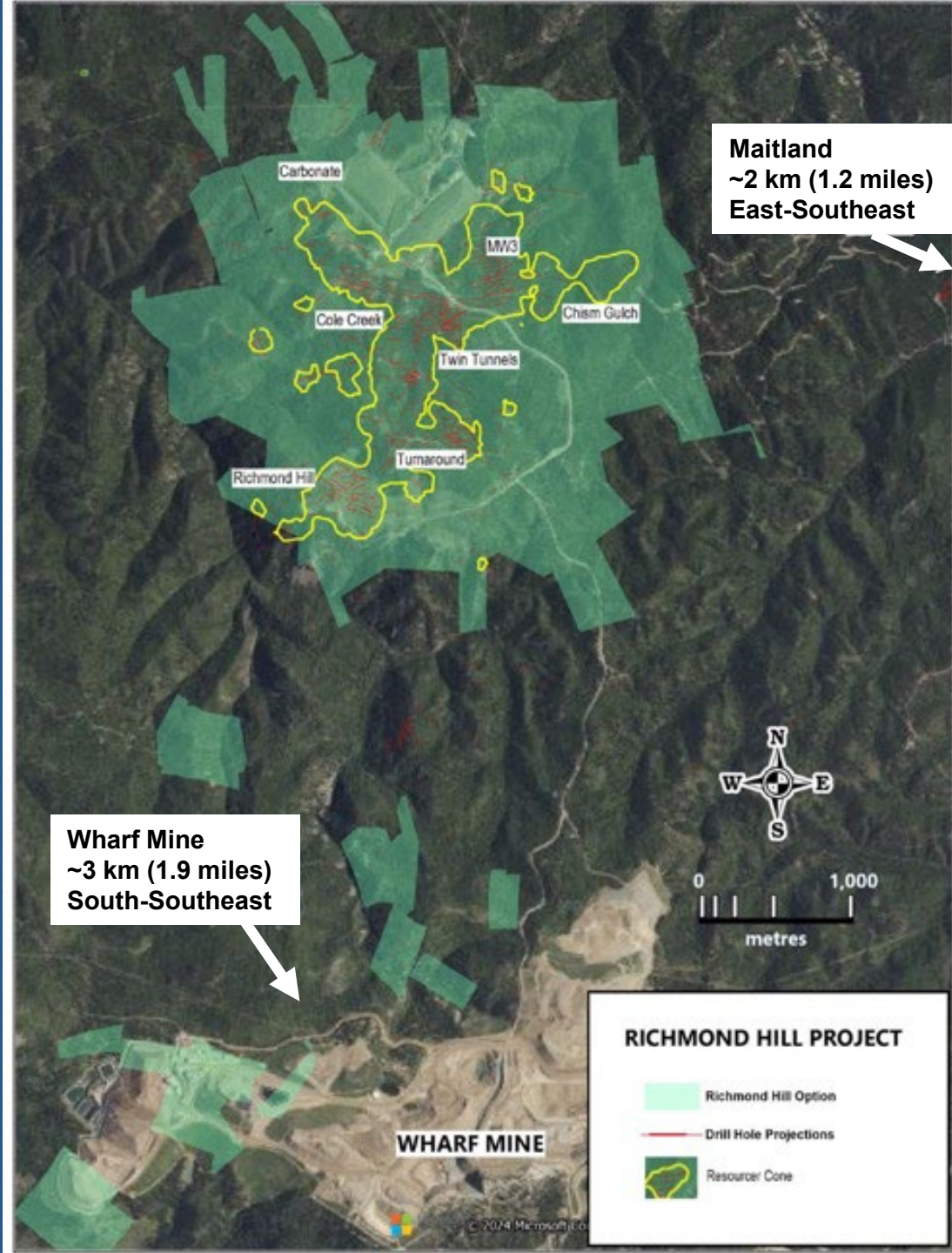


Plan View Map



Richmond Hill Gold Project - Delivering a Maiden Resource

- Drilling commenced March 2022
- Resource timeline – The **multi-million-ounce** maiden resource was outlined in less than 20 months from Dakota Gold's first drill hole.
- Maiden resource was derived from a historical database containing **69,401 gold assays** from more than **900 drill holes**, including **57 drill holes from Dakota Gold's current drill program**.
- Updated S-K 1300 resource planned as early as Q1 2025
- Updated Initial Assessment with Cash Flow planned as early as Q2 2025



Richmond Hill - Conceptual Pit-Constrained Maiden Resource Estimate at Variable Cutoff Grades

REDOX	CLASSIFICATION	AU G/T	TONNES	OUNCES AU
Oxide	Indicated	0.65	14,979,000	314,000
Mixed	Indicated	0.74	22,849,000	547,000
Hypogene	Indicated	1.04	14,001,000	469,000
TOTAL	Indicated	0.80	51,829,000	1,330,000

Oxide	Inferred	0.49	27,437,000	429,000
Mixed	Inferred	0.63	19,957,000	407,000
Hypogene	Inferred	0.86	10,668,000	296,000
TOTAL	Inferred	0.61	58,062,000	1,132,000

Announced April 30, 2024

See S-K 1300 Initial Assessment Table 1.1

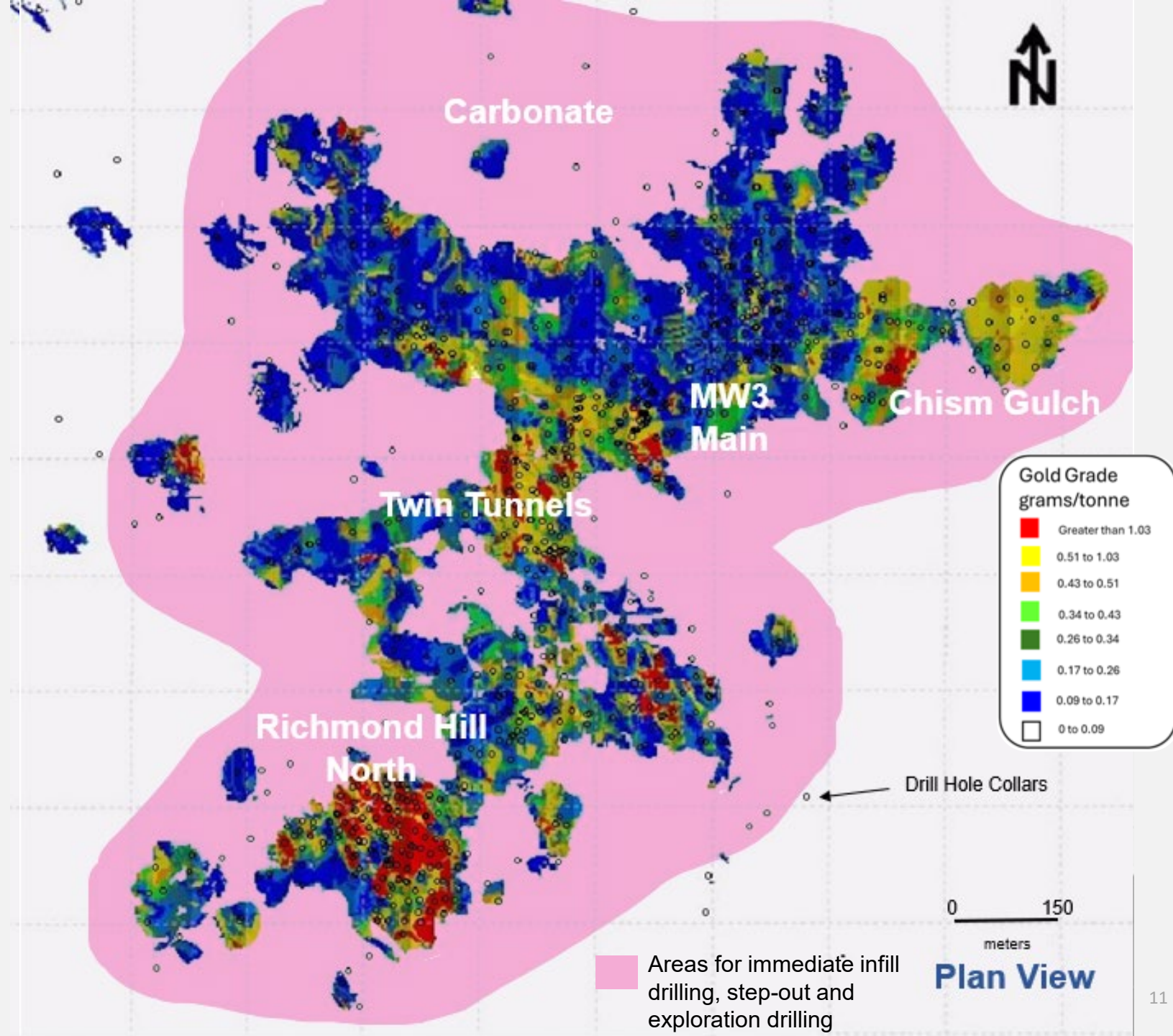
Notes:

- Mineral resources are not mineral reserves and do not have demonstrated economic viability.
- There is no certainty that all or any part of the estimated mineral resources will be converted into mineral reserves.
- Pit-constrained resources are stated at a range of cutoff gold grades depending on oxide state.
- Oxide recovery = 87%, mixed recovery = 65%, hypogene recovery = 42%.
- Mineral resource tonnage and contained metal have been rounded to reflect the accuracy of the estimate, and numbers may not add due to rounding.
- Mineral resource tonnage and grades are reported as undiluted.
- MRE is current as of October 5, 2023.
- Pit-Constrained at \$1,900/oz; Royalty = 3.8%; Mill & G&A Cost = \$8.00; Mine Cost = \$1.80.
- Cutoff grade Au g/t : Oxide 0.21 g/t, Mixed 0.29 g/t, Hypogene 0.44 g/t
- Pit slope at 50 degrees

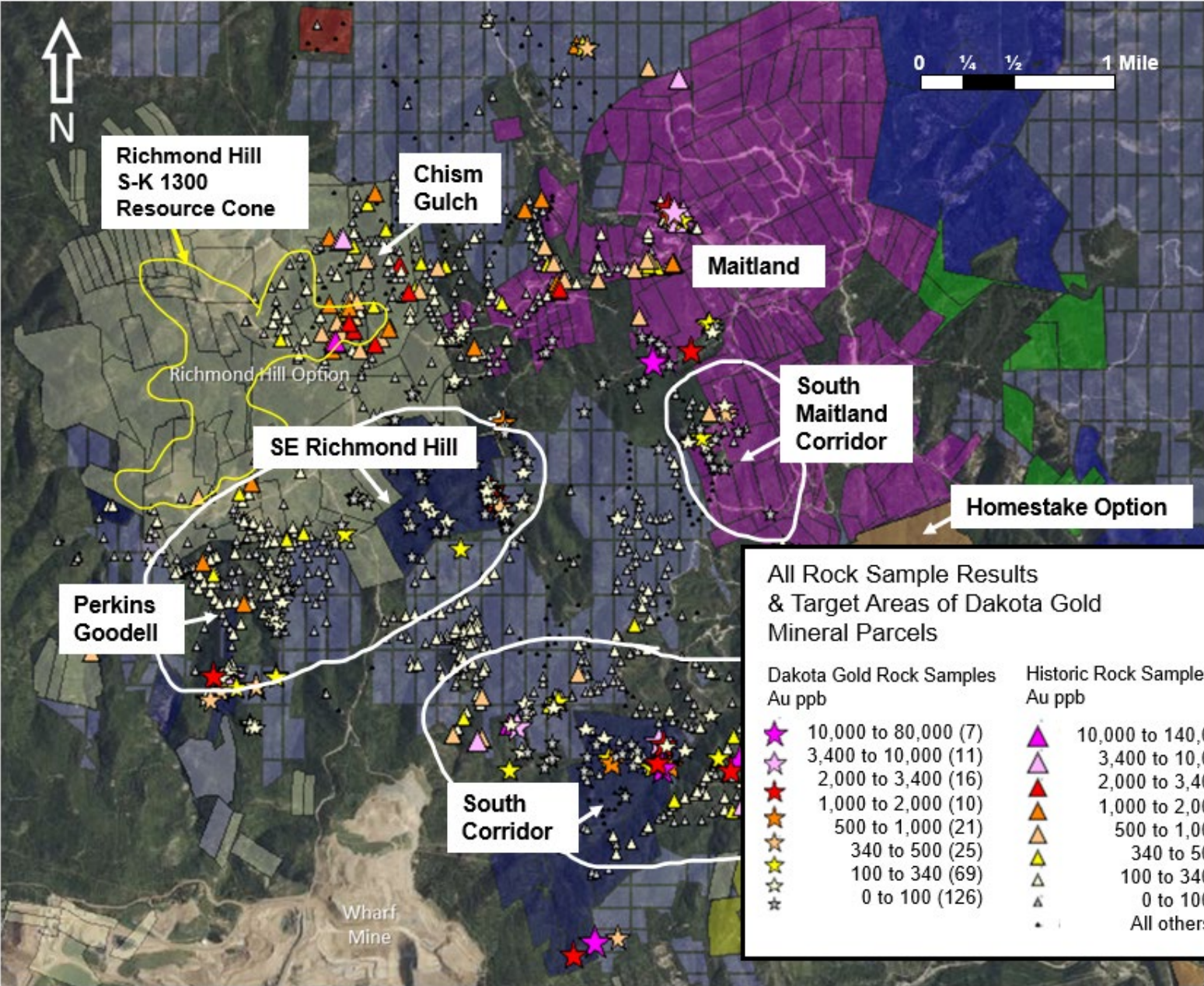


Richmond Hill - Potential Step-Out & Infill Areas

- Only partially tested three of the six known breccia pipes
- Mineralization is very shallow with portions of the resource exposed at surface.
- The resource is constrained by lack of drilling not geology.
- High-grade potential – Drilling completed post S-K 1300 cut off (not included in maiden resource) includes:
22.9 meters of 1.99 g/t Au;
42.8 meters of 1.71 g/t Au; and
60.9 meters of 1.68 g/t Au.



Exploration Pipeline - Map of Active West Corridor Exploration Project Areas



Historic Drill Holes

- SE Richmond Hill**
- 75'/.022 oz/t 245-320'
 - 40'/.035 oz/st 370-410' (Incl. 25'/.031 oz/st @ TD)
 - 30'/.033 oz/st 75-105' (Incl. 15'/.044 oz/st @ TD)
- Perkins-Goodell**
- 100'/.055 oz/st 5-105' Ox (Incl. 20'/.111 oz/st @ TD)
 - 165'/.027 oz/st 280-445'
 - 120'/.025 oz/st 180-300' Ox
 - 140'/.033 oz/st 40-180' Ox (Incl. 10'/.052 oz/st @ TD)
- South Corridor**
- 35'/.023 oz/st 140-175'
 - 95'/.029 oz/st 140-235' (Incl. 50'/.045 oz/st)
 - 35'/.029 oz/st 460-495' (Incl. 15'/.048 oz/st @ TD)

Sustainability Highlights 2023



SVP & Chief
Administrative Officer

“Dakota Gold is committed to sustainable development as a core value, as further articulated in our Environmental and Community Relations Policies.”



HEALTH AND SAFETY

- **Achieved 3 YEARS with ZERO Lost Time Incidents** (2021 to 2023)
- Voluntarily provided full Mine Safety & Health Administration training to our workforce
- Employed 40 full-time & 2 part-time employees, 4 interns, 10 consultants, and 40 contractors



ENVIRONMENT

- **ZERO Reportable Environmental Incidents** since commencing drill programs in 2022



COMMUNITY

- **Over \$59,000 Direct Investments to Local Community** and professional organizations, and educational institutions in South Dakota
- **More than \$26.5 Million Invested in South Dakota** through payroll, payments to vendors and contractors and purchases on land and buildings
- **Hosted 17 Community Engagement Events**



GOVERNANCE

- Co-Chairs, Steve O'Rourke and Robert Quartermain sit on ESG Committee
- Adopted or updated and made available on our website the following policies
 - Code of Ethics
 - Environmental Policy
 - Community Relations Policy
 - Anticorruption Policy



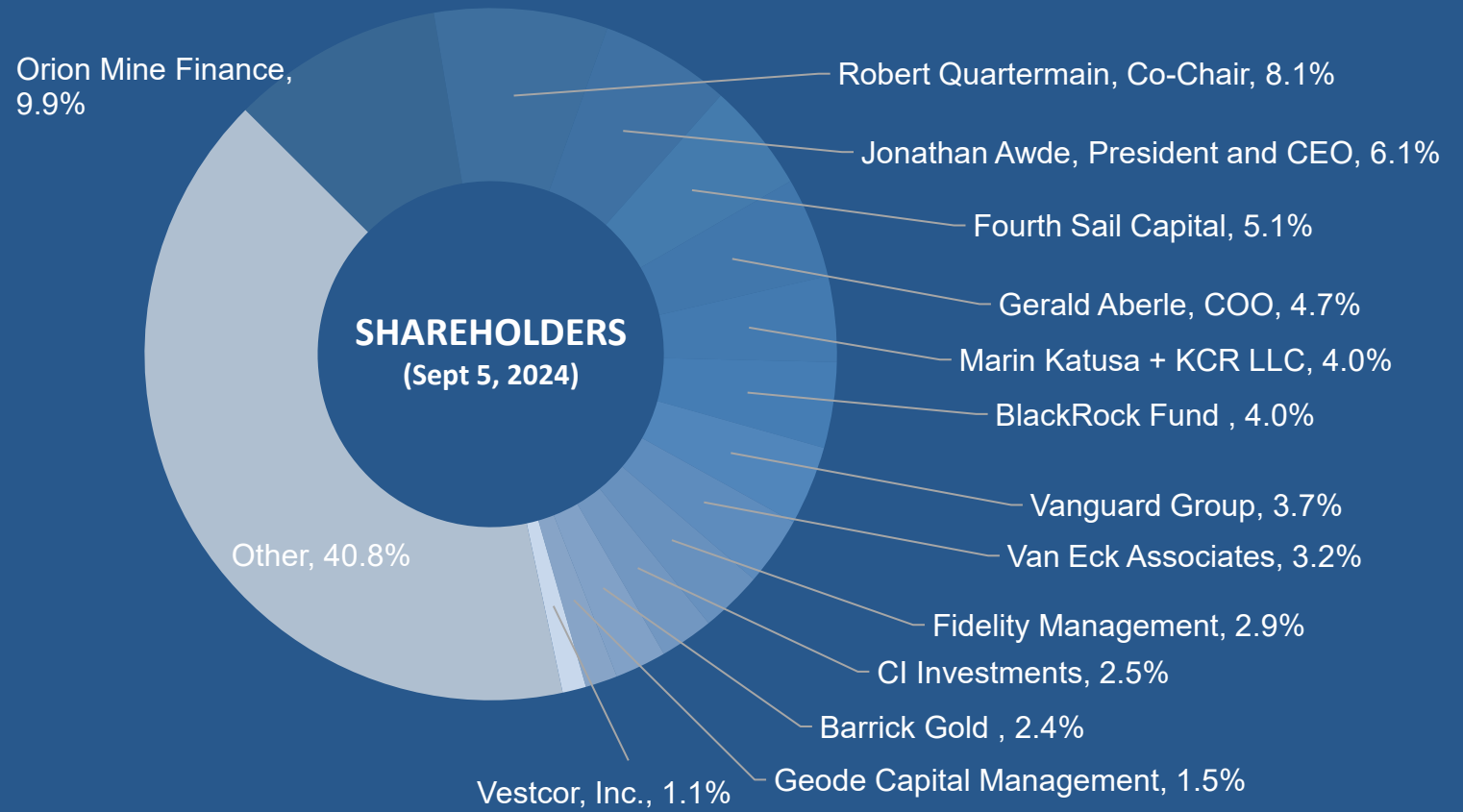
Capital Structure & Shareholders

Capital Structure (Jun 30, 2024)	(in millions)
Shares Outstanding	90.9
Stock Options	4.6
Restricted Share Units	1.5
Performance Share Units	0.7
Warrants Outstanding	7.6
Fully Diluted	105.3
Cash ¹	\$22.1
Market Cap (as at Sept 5, 2024)	~\$217

ANALYST COVERAGE	
Canaccord Genuity	Peter Bell
Agentis Capital	Michael Gray
BMO Capital	Andrew Mikitchook

1. Cash as at Jun 30, 2024. Adjusted by \$6m for the Orion financing announced on June 26, 2024.

Management and Advisors Own ~25%; Full Alignment with Shareholders



Note: Dakota Gold included in Russell 3000 and GDXJ Indices (as of Jun 2022)



Directors and Management

BOARD OF DIRECTORS

Robert Quartermain
Co-Chair, Director
Past Executive Chairman of Pretium Resources Inc. Inducted to Canadian Mining Hall of Fame in 2022.

Stephen O'Rourke
Co-Chair, Director
Former President of Global Petroleum Exploration for BHP Billiton.

Jonathan Awde
President, CEO, Director
Co-founder, Director and past CEO and President of Gold Standard Ventures Corp.

Gerald Aberle
COO, Director
Homestake Mining Company (22 years). Co-founder of DTRC.

Jennifer Grafton
Director
Senior VP & Associate General Counsel of E2open Parent Holdings Inc.

Amy Koenig
Director
VP, Governance, Corporate Secretary & Deputy General Counsel for Black Hills Corporation. Director for Children's Home Society of South Dakota.

Alice Schroeder
Director
Serves or has served on numerous public company boards including Carbon Streaming Corp., Natus Medical Inc., HSBC North America Holdings Inc., and Prudential plc.

MANAGEMENT

Shawn Campbell
CFO
Former Chief Financial Officer of GT Gold Corp. Experience with both Goldcorp and Newmont.

James Berry
VP, Exploration
Worked for Barrick at Homestake and for Gold Corp at Wharf, in the Homestake District. Previously VP, Exploration for Romarco Minerals.

Carling Gaze
VP of IR and Corp Communications
Former Senior Investor Relations and Corporate Communications Associate of Pretium Resources Inc. with over 15 years of experience in the mining and natural resource industry.

Mark Rantapaa
Operations Manager
Operations Manager of Black Hills Operations at DTRC. Over 25 years with Barrick Gold Corporation.

Timm Comer
Environmental Director
Three decades of experience in environmental permitting, policy development, and compliance program implementation of mining properties with effective operation, reclamation, and closure focus.

Patrick Malone
SVP & Chief Administrative Officer
Former Vice President at Barrick Gold and President of Homestake Mining Company of California. Over twenty years of experience with permitting and closing mining operations.

Elizabeth Sailer
VP, External Relations
Over twenty years of experience in public, governmental and media relations, communications and partnership collaborations throughout South Dakota.

Ron Everett
Business Manager
Mayor of Lead, and former Administration Manager of Wharf Mine and Richmond Hill Mine.

Bill Gehlen
Manager of Geology
Former Manager, Corporate Development at Gold Standard Ventures and former Manager, Resource Development with OceanaGold.



2024 Outlook

- Entering Next Era of the Homestake Gold District



~\$30 Million Exploration Program Underway



4 Drills Operating On Private Land



Advance Studies on Richmond Hill

Maitland Gold Project –

- Continue step-out drilling
- Follow up on JB Gold Zone Discovery
 - Phase II directional drilling to halve distance between holes
- Follow up on Unionville Zone Discovery

Richmond Hill Gold Project –

- Continue infill and step-out drilling
- Updated S-K 1300 resource planned as early as Q1 2025
- Updated initial Assessment with Cash Flow planned as early as Q2 2025
- Baseline environmental studies for permitting



Appendix



Maitland

– JB Gold Zone

Drill Hole MA24C-038



James Berry
Vice President
Exploration

“Based on my experience working in the Homestake Mine, at Maitland we have intersected higher grade mineralization that is shallower than exploration results from the upper portion of the West Ledge system at Homestake, which ultimately produced more than 6 million ounces of gold.”

- The growing array of drill holes targeting Homestake Mine-style gold mineralization has now produced multiple high-grade gold intercepts in at least three distinct ledges within the JB Gold Zone at Maitland: 34 Ledge, 35 Ledge and 36 Ledge.
- Drill hole MA24C-036 returned 9.36 grams/tonne gold over 2.6 meters, and drill hole MA24C-038 returned 25.03 grams/tonne over 4.4 meters. Both holes are located in 36 Ledge on the west side of the Maitland mineralized gold trend and the gold mineralization intersections are shallow at approximately 500 meters below surface.
- Drilling at Maitland is transitioning from wider spacing of approximately 250 meters, to tighter spacing to delineate the ledges now outlined which remain open along strike and to depth.

Hole #	From m	To m	Depth m	Interval m	Gold g/t	From ft	To ft	Depth ft	Interval ft	Gold Oz/ton	Mineral Type	g x m
MA24C-036	621.8	624.4	478.2	2.6	9.36	2040.0	2048.6	1569.0	8.6	0.273	Homestake	24
MA24C-038	608.4	612.8	496.8	4.4	25.03	1996.0	2010.5	1630.0	14.5	0.730	Homestake	110



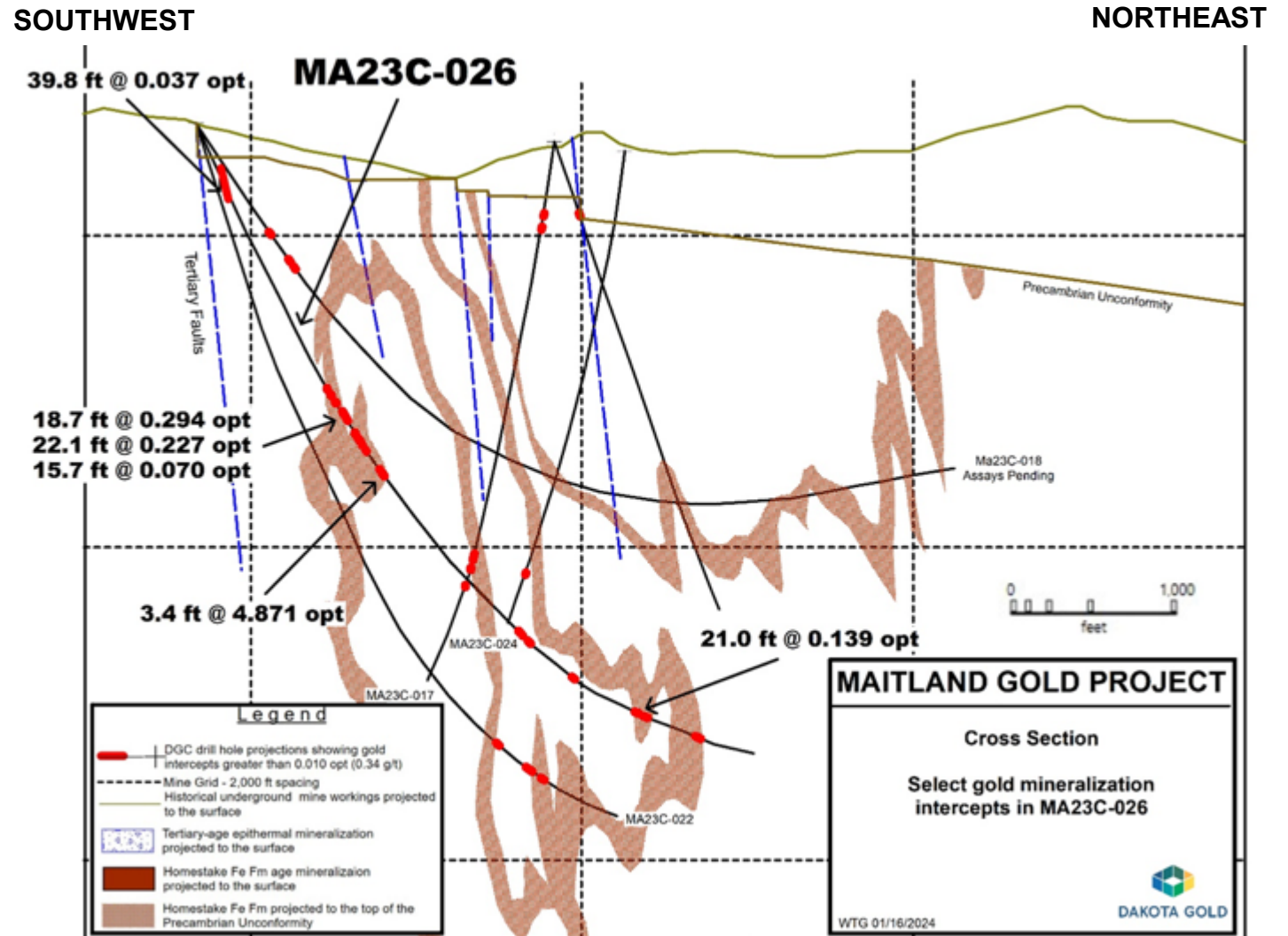
Maitland

– JB Gold Zone

Hole MA23C-026

- Highest-Grade Intercept To Date at Maitland 4.871 oz/ton Au over 3.4 feet (167.0 g/t Au over 1.0 meter)
- 14 sample intervals in Homestake Formation with visible gold between 2283.3 and 2539.6 feet and an additional occurrence at 5113 feet in the lower portion of the hole.
- MA23C-026 also intersected 0.037 oz/ton Au over 39.8 feet (1.26 g/t Au over 12.1 meters) in a new Tertiary zone of epithermal gold mineralization in the upper part of the drill hole, located approx. 500 feet west of the Unionville Zone discovery area. This mineralization appears to be in a distinct Tertiary-age structural zone west and parallel to the Unionville Zone.

Multiple High-grade Homestake-style Mineralization Hits



Homestake Mine Gold Grades

Main Ledge

Av. 8.37 g/t Au
65.6M tons / 15.5M oz Au

7 Ledge

Av. 7.31 g/t Au
7.5M tons / 1.5M oz Au

9 Ledge

Av. 9.05 g/t Au
38.3M tons / 10.1M oz Au

11 Ledge

Av. 7.87 g/t Au
8.6M tons / 1.9M oz Au

13 Ledge

Av. 8.71 g/t Au
1.6M tons / 0.4M oz Au

15 Ledge

Av. 7.95 g/t Au
1.4M tons / 0.3M oz Au

17 Ledge

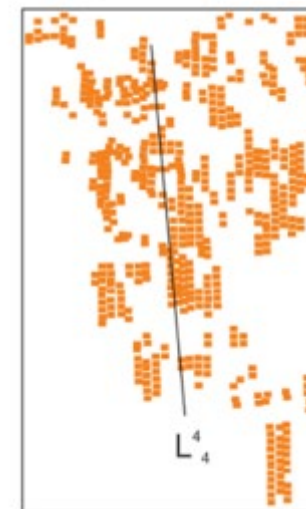
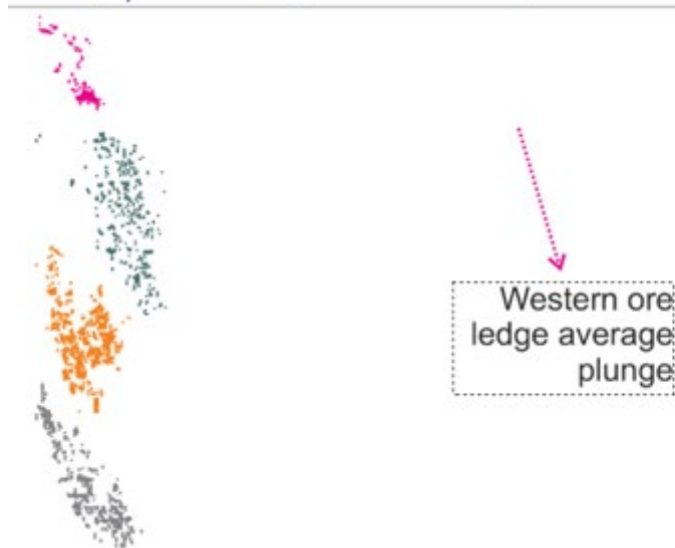
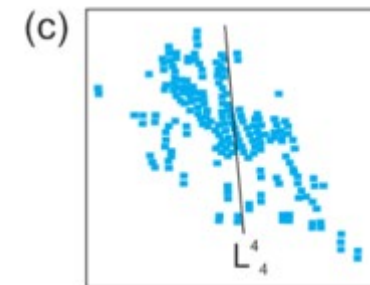
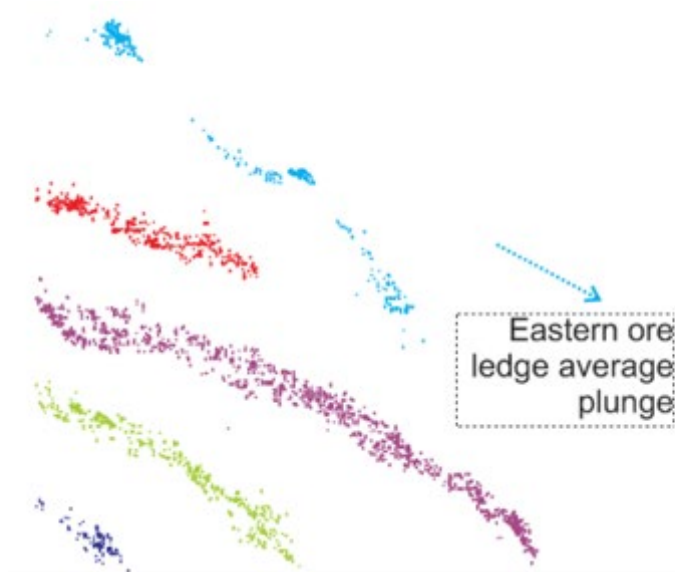
Av. 6.94 g/t Au
6.9M tons / 1.4M oz Au

19 Ledge

Av. 7.03 g/t Au
7.3M tons / 1.4M oz Au

21 Ledge

Av. 8.34 g/t Au
10.4M tons / 2.5M oz Au

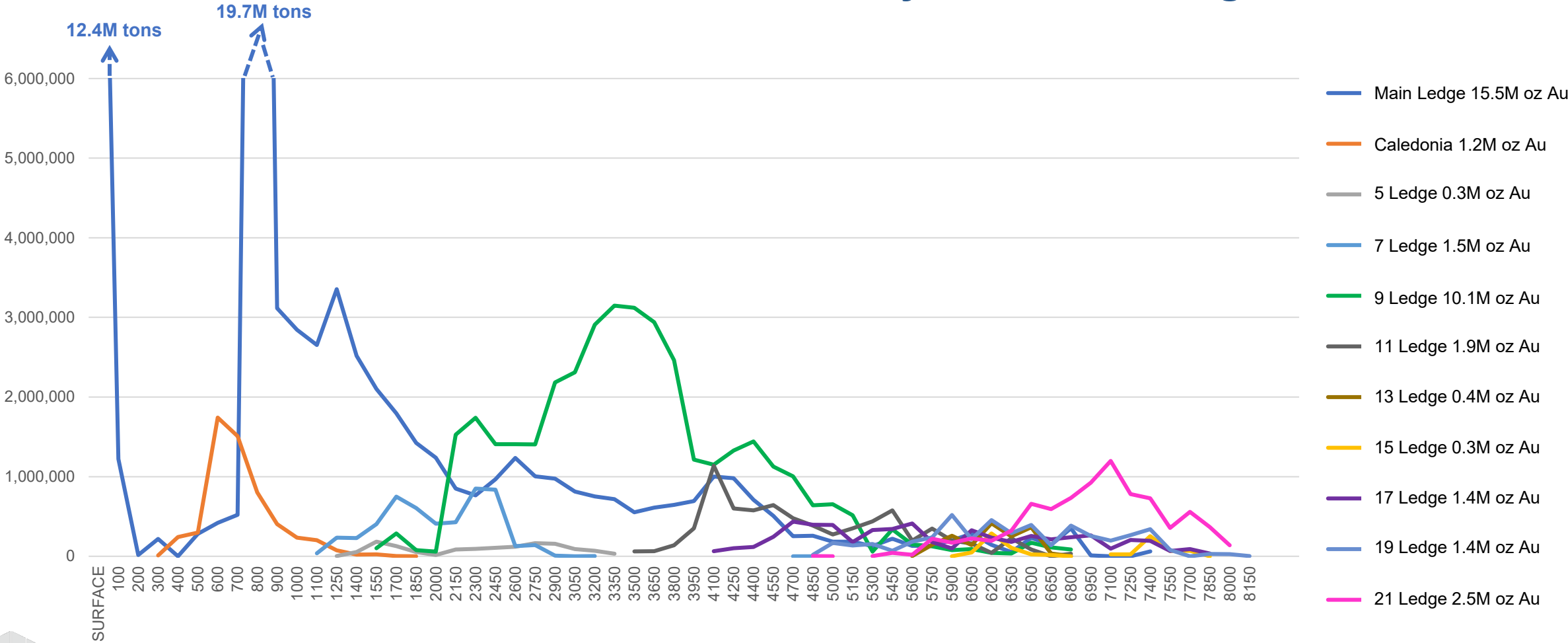


Credit:
Christopher C. Bell's
PhD Exit Seminar



Homestake Mine Exploration

Homestake Mined Tons by Level and Ledge



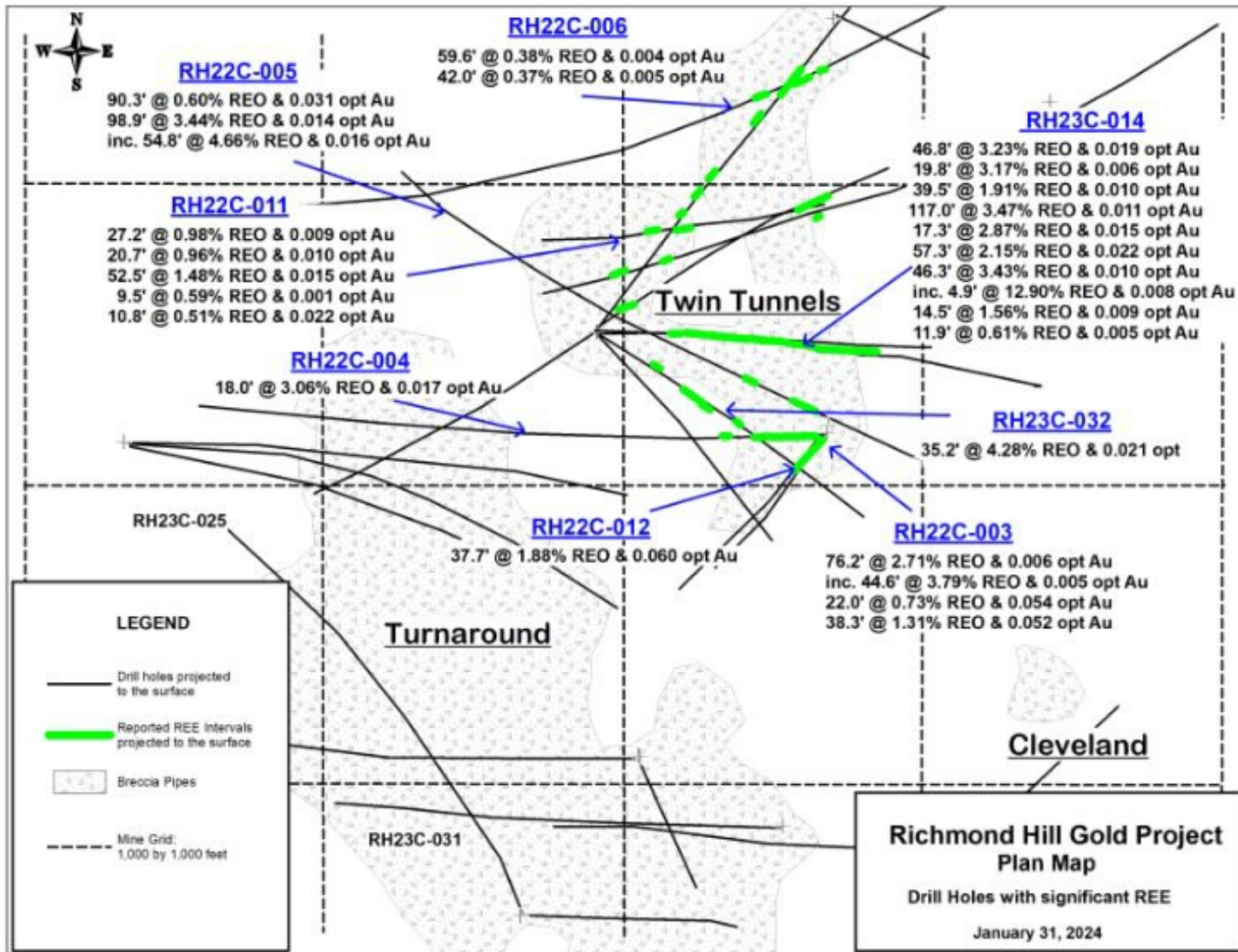
Richmond Hill – TD Zone Discovery

- High Levels of total REO up to 12.90% over 4.9 feet
- Mineralization overlaps and coincides with the Richmond Hill gold resource area
- REO concentrations >1% in a discrete area 1,000 ft. X 1,000 ft. X 1,000 ft.



Hole ID	From		Int.	Total REO %	Au opt	Major Rare Earth Oxides %					
	feet	feet				feet	La ₂ O ₃	CeO ₂	Y ₂ O ₃	Nd ₂ O ₃	Dy ₂ O ₃
RH23C-014	1752.1	1757.0	4.9	12.90	0.008	5.220	5.840	0.203	1.030	0.020	0.410

Plan View



*See news release dated Jan 31, 2024





DAKOTA GOLD
NYSE American: DC

MEDIA AND INVESTOR RELATIONS

Jonathan Awde

C +1 604 761 5251

E jawde@dakotagoldcorp.com

LEAD MAIN OFFICE

106 Glendale Drive, Suite A, Lead,
South Dakota, 57754, USA

VANCOUVER OFFICE

1588 609 Granville Street, Vancouver,
British Columbia, V7Y 1G5, Canada



info@dakotagoldcorp.com



[@dakotagoldcorp](https://twitter.com/dakotagoldcorp)



[linkedin.com/company/dakotagold/](https://www.linkedin.com/company/dakotagold/)



[dakotagoldcorp.com](https://www.dakotagoldcorp.com)



+1 778 655 9638