



DRYDEN

GOLD CORP

**Advancing
High-Grade Discoveries
in Northwestern Ontario**

TSXV: DRY | OTCQB: DRYGF
WWW.DRYDENGOLD.COM

JULY 2024

Acknowledgements & Forward-Looking Statements

Dryden Gold Corp acknowledges all Indigenous Peoples and that it is operating on the traditional homelands of the Wabigoon Lake Ojibway Nation and Eagle Lake First Nation.

Certain statements contained herein constitute “forward-looking statements” within the meaning of the applicable Canadian securities legislation. These forward-looking statements are based on current expectations, estimates and projections about the Canadian mining and mineral exploration industry based on management’s beliefs and certain assumptions made by management. Readers are cautioned that such forward-looking statements are not guarantees of future performance and are subject to risks, uncertainties and assumptions that are difficult to predict and the actual results and performance of Dryden Gold Corp. (the “Company”) may differ materially from the results implied by such statements. Readers are cautioned not to place undue reliance on any forward-looking statements. Unless otherwise required by law, the Company also disclaims any obligation to update its view of any such risks or uncertainties or to announce publicly the result of any revisions to the forward-looking statements made here.

This document contains proprietary information that is the property of Dryden Gold Corp. Neither this document, nor the proprietary information contained herein, shall be published, reproduced, copied, disclosed or used for any other purpose, other than the review and consideration of this document.

This presentation is not an offer, nor the solicitation of an offer to buy any securities. Such an offer, if made, will be made only through a prospectus or other such document issued in accordance with applicable securities laws, and other applicable laws, rules and regulations., Or pursuant to the applicable exemption from the requirement to deliver a prospectus, in accordance with applicable laws.

Historical statements contained in this document regarding past activities should not be taken as a representation that such trends or activities will continue in the future. In particular, historical results should not be taken as a representation that such trends will be replicated in the future. No statement in this document is intended to be nor may be construed as a profit forecast.

An investment in the Company is speculative and involves substantial risk and is only suitable for investors that understand the potential consequences and are able to bear the risk of losing their entire investment. Investors should consult with their own legal, tax and financial advisors with respect to all such risks before making an investment.

The Company is in the early stage of development and has a limited operational history, making it difficult to accurately predict business operations. The Company has limited resources and may run out of capital prior to becoming profitable. The Company may fail and investors may lose their entire investment.

The technical disclosure in this presentation has been approved by Maura J. Kolb, M.Sc., P.Geo. a Qualified Person as defined by National Instrument 43-101 of the Canadian Securities Administrators.

DRYDEN

GOLD CORP



What Sets us Apart



Experienced Management

Experienced Management & Board of Directors
Strong track record of building shareholder value & navigating M&A
Extensive regional experience & discoveries in Northwestern Ontario



Strategic Land Position

Dominant strategic land position in the under-explored Dryden Gold District
Multiple high-grade gold intercepts & historic mines along the Manitou-Dinorwic deformation zone
Brownfields opportunity in the Gold Rock Camp
Geological setting similar to both Red Lake and Timmins Camps
Excellent infrastructure with power, highway, forestry road access and mining talent
Favourable mining jurisdiction and First Nations relationships



Investment Upside

Consolidated land package with exploration program developed to attract major & mid-tier producers
History of buyouts in the region- **Great Bear, Rainy River, Hammond Reef**
Lead investments from **Rob McEwen, Eric Sprott, Delwood Capital** and **EuroPac Gold Fund**
Largest Shareholder – Alamos Gold (NYSE-AGI)



DRYDEN

GOLD CORP

Management & Directors



C.F. (TREY) WASSER CEO & Director

- ▲ Served as President & CEO of Ely Gold Royalties Inc., 2010-2021. Transformed Ely Gold from an \$6M exploration/development company to \$300M royalty company – sold to Gold Royalty Corp.
- ▲ President & Director of Research for Pilot Point Partners specializing in precious metal mining and oil & gas development.
- ▲ Brokerage and venture capital business for over 40 years, including bond salesman and trader with Merrill Lynch, Kidder Peabody and Paine Webber. Clientele included Fortune 100 companies & institutional money managers.



MAURA J. KOLB M.Sc. P. Geo. – President

- ▲ Total of 15 years experience in mining & exploration.
- ▲ Diverse exploration background, bringing projects into commercial production.
- ▲ Director for Critical Discoveries, Board Member of Northwestern Ontario Chapter of Women in Mining.
- ▲ Experience includes Director of Exploration for Treasury Metals. Prior to that she spent eight years in the Red Lake Camp with Goldcorp, Newmont, Evolution and Battle North leading geology and exploration for mine sites and regionally.
- ▲ Master of Science at Lakehead University



SCOTT KELLY CFO & Director

- ▲ Total of 20 years of experience.
- ▲ Senior officer and/or director of various private and public companies with large scale resource assets throughout North and South America.
- ▲ Assisted and managed companies through all stages from IPOs through to successful acquisitions by major multi-national corporations.
- ▲ Acted as CFO of Marlin Gold Mining Ltd and Mako Mining Corp; V.P. Finance for Pediment Gold Corp; Served as CFO of Ely Gold Royalties, which was eventually acquired by Gold Royalty Corp. degree from Royal Roads University in 2001.



ANNA HICKEN M.Sc. P. Geo. – Vice President Exploration

- ▲ Professional geoscientist with over 14 years of experience in gold, base-metals and lithium.
- ▲ Experience includes Director of Geology for Fortuna Investments and Principal Consulting Geologist for various public companies. Spent considerable time in the Red Lake Camp for Goldcorp and in Nunavut for Sabina Gold and Silver.
- ▲ Member of the PDAC Geoscience and Innovation committee and the Steps for Life Vancouver committee.
- ▲ Master of Science from Queen's University and is registered with Professional Geoscientists Ontario (PGO) and Engineers and Geoscientists British Columbia (EGBC).



JASON JESSUP Director

- ▲ Total of 24 years of experience in the mining industry.
- ▲ Co-founder, CEO & Director of Magna Mining Inc.
- ▲ Has held key roles in corporate and operations management.
- ▲ The majority of his career in the Sudbury region, at Inco and FNX where he led the operations team that brought the Morrison Deposit into commercial production.
- ▲ Graduate of The Haileybury School of Mines and has an MBA from Athabasca University.



CHRISTINA MCCARTHY Director

- ▲ Geologist with over 15 years of experience in the resource capital markets.
- ▲ Former President & CEO of Paycore Minerals Inc, recently acquired by I-80 Gold for \$90 million.
- ▲ Served as Director of Corporate Development for McEwen Mining Inc. from December 2014 to December 2019.
- ▲ Influential in building an exempt market dealer focusing on resources, equity research at Euro Pacific and Institutional Sales at Haywood Securities.
- ▲ Currently serving as a director for I-80 Gold and Kirkland Lake Discoveries.



DARIN WAGNER M.Sc., P. Geo. – Advisor

- ▲ Over 30+ years of exploration and corporate development experience, including fund raising, corporate management, and M&A.
- ▲ Recognized expert in gold exploration in the Archean greenstone belts of Canada.
- ▲ Co-founded/founder of Abitibi region explorers West Timmins Mining, Falco Pacific Resources and Balmoral Resources.
- ▲ West Timmins and Balmoral third party acquisition deals valued at \$424, \$160 million, respectively.
- ▲ Falco transferred to the Osisko Group to advance the multi-million-ounce Horne deposit in Quebec.



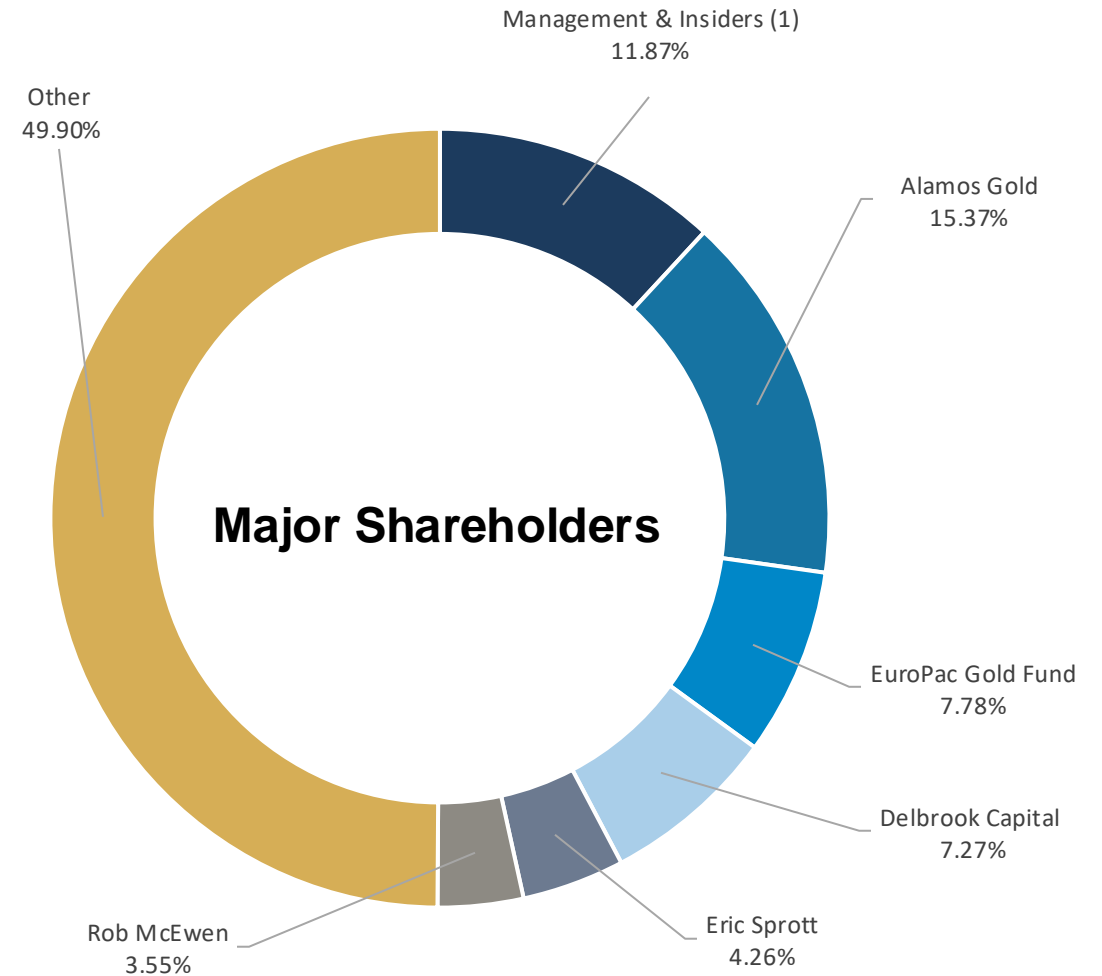
STEPHEN KENWOOD P. Geo. – Advisor

- ▲ Geological and management consultant to public and private companies.
- ▲ Vast experience working on exploration programs worldwide including; Snip gold deposit (BC, Canada), Eskay Creek polymetallic deposit (BC, Canada) and Cobre copper-gold porphyry in Panama
- ▲ Bachelor of science from University of British Columbia
- ▲ Director and President of Majestic Gold Corp. and director on three other TSX Venture exchange listed companies.

Share Structure

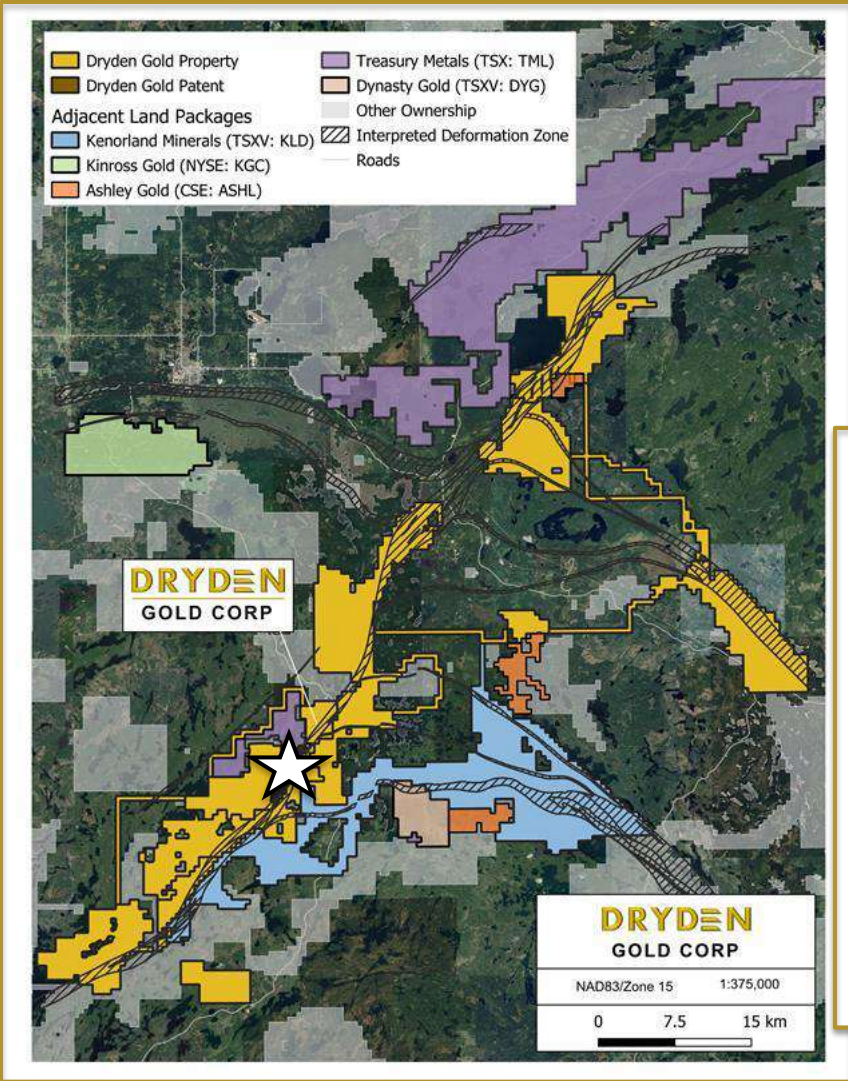
Trading Symbols	TSXV: DRY OTCQB: DRYGF
Current Issued and Outstanding	93,887,461
Warrants Outstanding (42,024,395 @ \$0.30) Expire December 27, 2025	42,024,395
ESOP Options Outstanding	<u>5,600,000</u>
Fully Diluted	141,511,856
Cash Balance	\$1,700,000

As at June 27, 2024

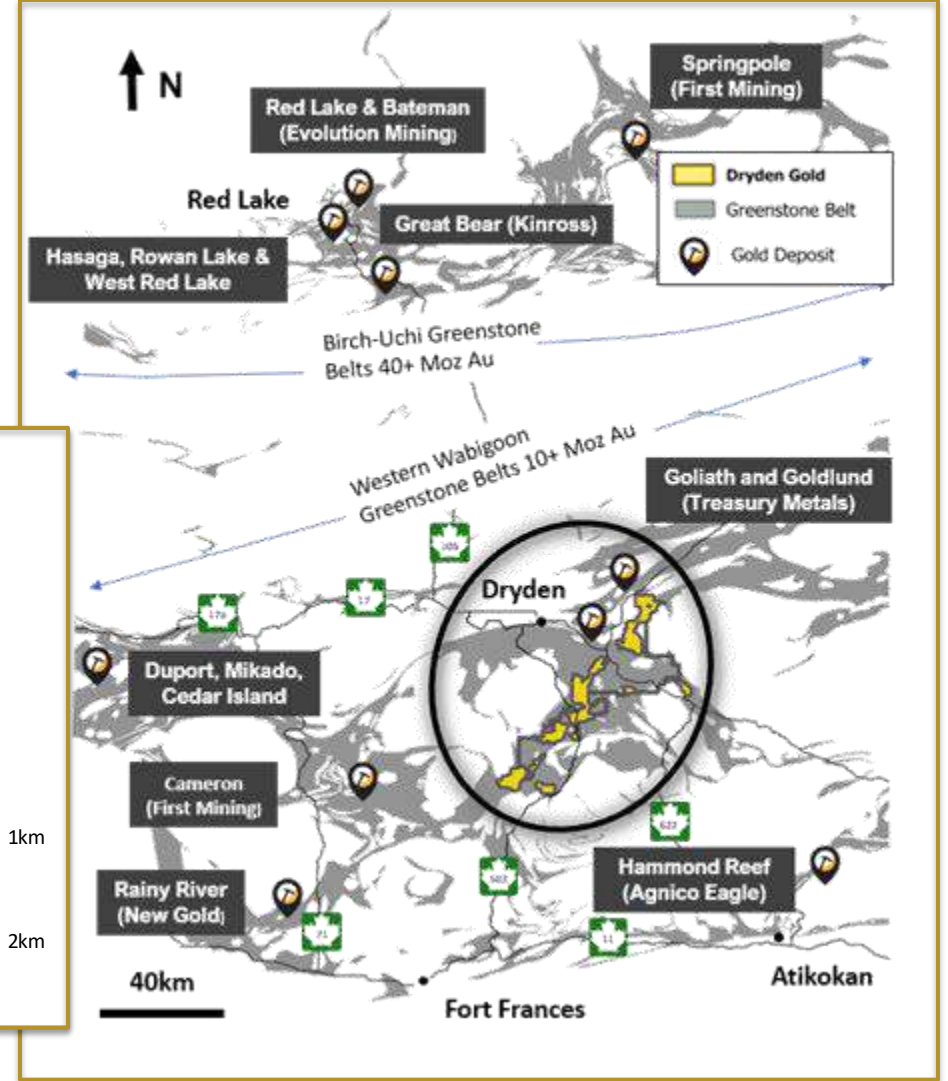
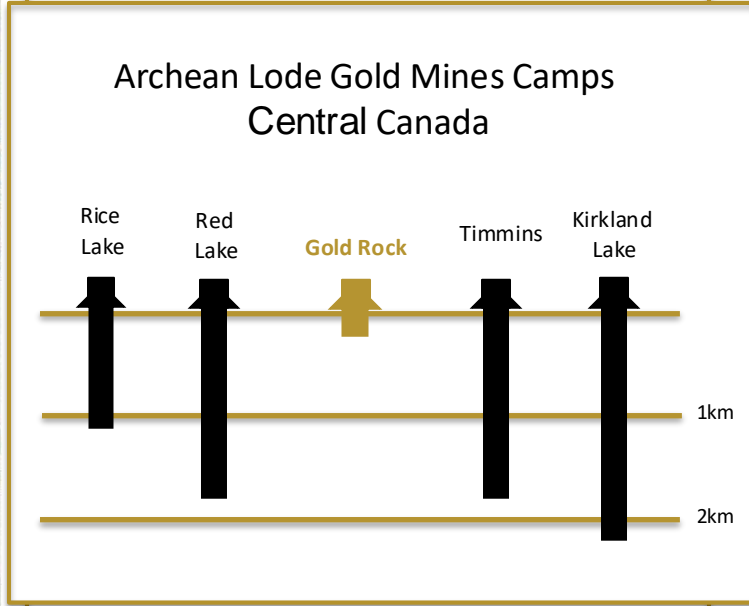


(1) Subject to 36-month escrow.

Prolific Gold Region | Dryden Gold District



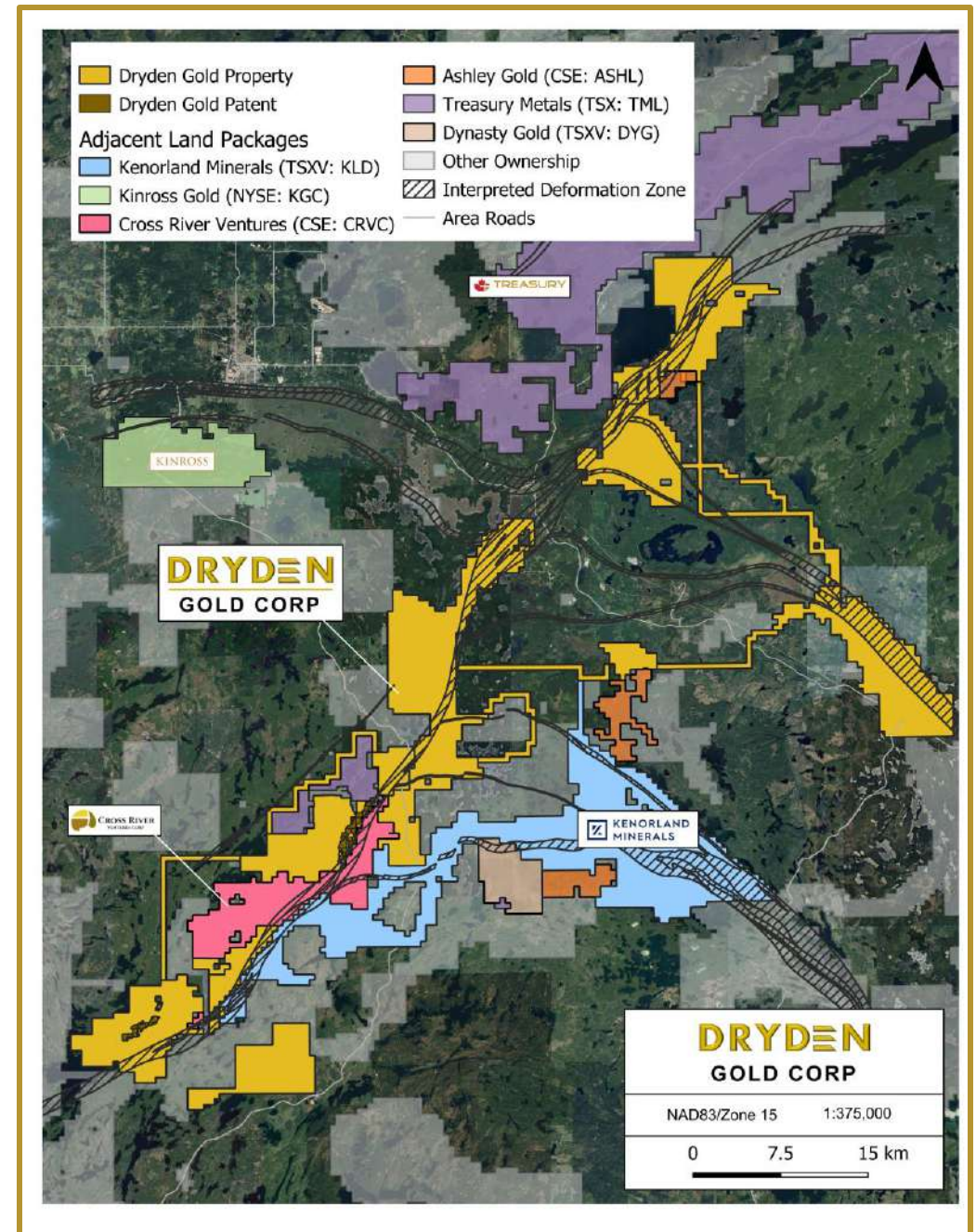
Gold Rock
 8.5m @ 3,497.0 g/t Au
 including
 0.55m @ 53,700 g/t Au



Strategic Land Package

- ▲ Over 600 km² (60,000 hectares) consolidated by Dryden Gold Corp.
- ▲ Excellent infrastructure – Roads (Trans-Canada Hwy), power & labor
- ▲ 50 km covering regional gold bearing MDdz structure (Manitou-Dinorwic deformation zone)
- ▲ **Kinross, Treasury Metals, Kenorland Minerals** and **Dynasty Gold** active in the Dryden Gold District
- ▲ **Treasury Metals** has defined a **3M ounce** low-grade resource in the Dryden Gold District
- ▲ Limited exploration - only **33,200 meters** of **historic** drilling district-wide at shallow depths
- ▲ **Initial focus** on **brownfield** opportunity in the **Gold Rock Camp**
- ▲ Recently acquired the fully permitted **Cross River** property that hosts several cross-cutting east-west structures are interpreted to potentially be upgrading structures in the system.

DRYDEN
GOLD CORP



Three Projects | Potential for High-Grade Gold Discovery

OUR EXPLORATION FOCUS FOR 2024

1 Gold Rock Camp Drill Intercept Highlights:

- ▲ Kenwest Patents – 3,497.0 g/t gold over 8.5 meters including 53,700 g/t gold over 0.55 meters
- ▲ Kenwest Patents – 15.4 g/t gold over 6.1 meters
- ▲ 502 Vein – 12.7 g/t gold over 4.0 meters
- ▲ Canamerica – 12.6 g/t gold over 4.0 meters
- ▲ Cross River Historic Queen Alexandra Mine (0.94 opt)

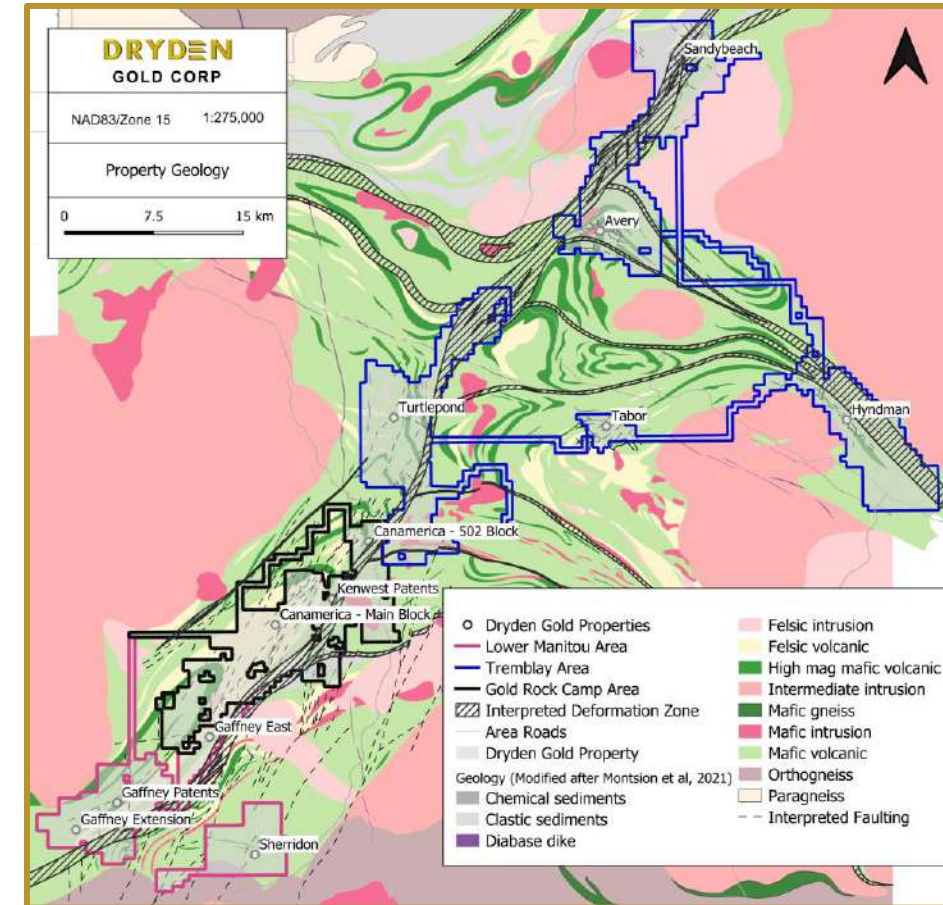


2 Lower Manitou Drill Intercept Highlights:

- ▲ Gaffney – 2.4 g/t gold over 75.1 meters
- ▲ Gaffney – 5.0 g/t gold over 8.8 meters
- ▲ Sherridon – 46.0 g/t gold over 0.5 meters

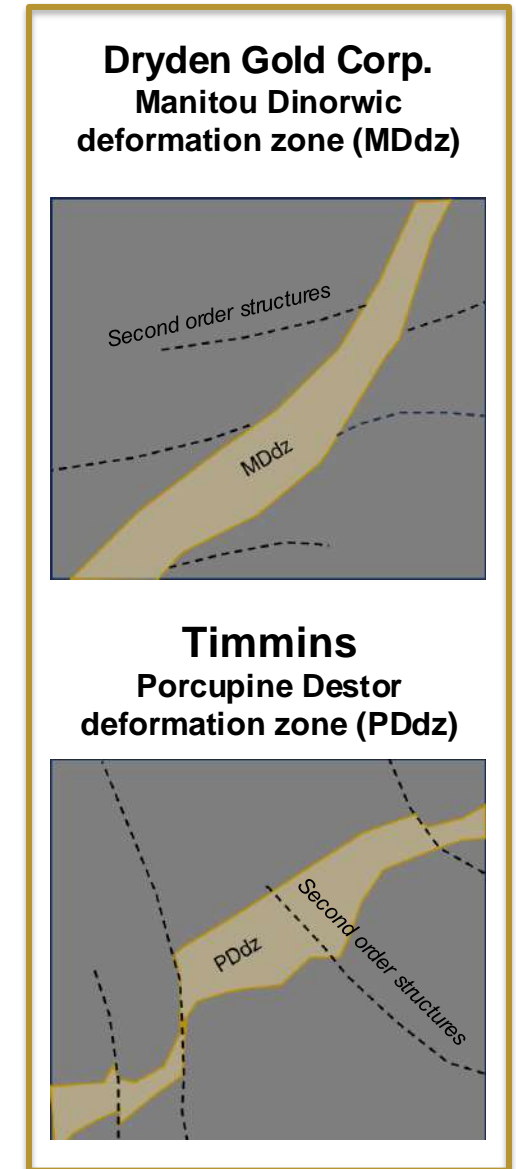
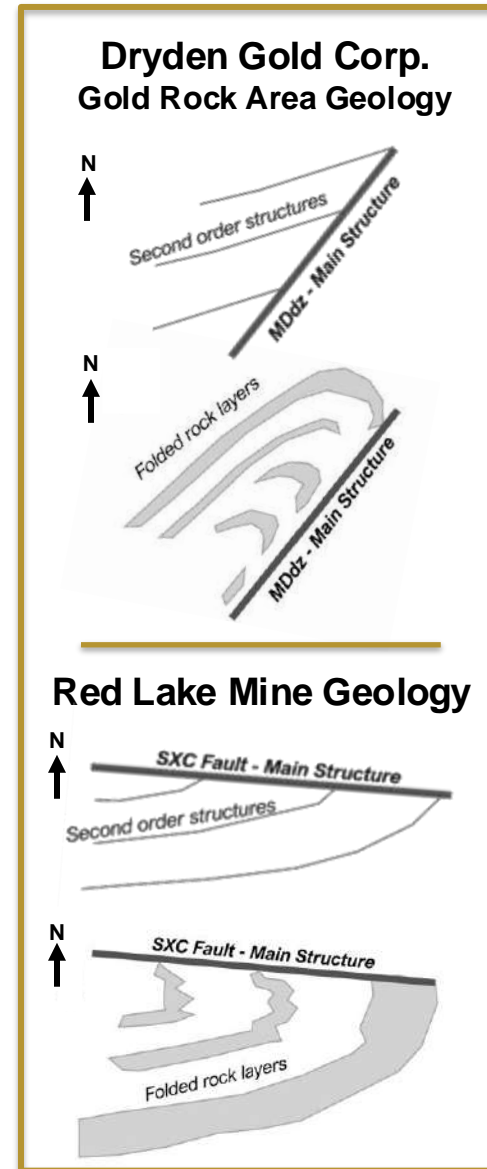
3 Tremblay Highlights:

- ▲ Turtlepond - 15.0 g/t gold grab sample
- ▲ Hyndman - 13.0 g/t gold grab sample
- ▲ Avery - 24.56 g/t gold over 2.25 meters (channel sample)
- ▲ Tabor - 39 g/t gold grab sample



Similarities to Red Lake and Timmins Camps

- ▲ Similar geological setting and rock types with regional folding
- ▲ Near surface high-grade free gold in an Archean setting
- ▲ Structural geometry – gold bearing *shear corridor with secondary splay structures*
- ▲ Favorable geological gold traps for high grade shoots
- ▲ Recent study comparing Dryden Gold District to Timmins Camp*



DRYDEN

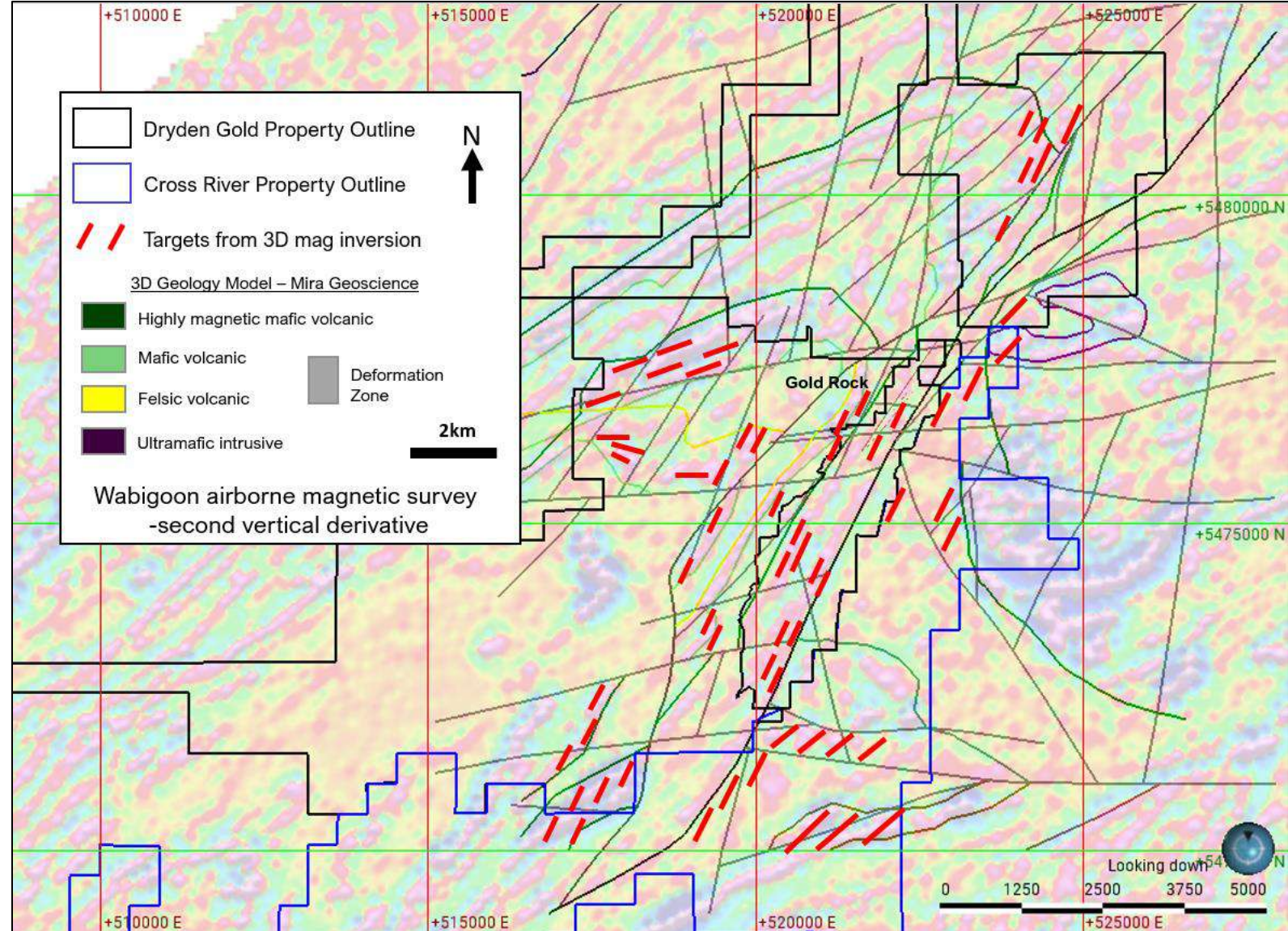
GOLD CORP

*After 2021 Montsion et. al – simplified geology showing greenstone belt, major deformation zones and secondary structures

TSXV: DRY | OTCQB: DRYGF DRYDENGOLD.COM

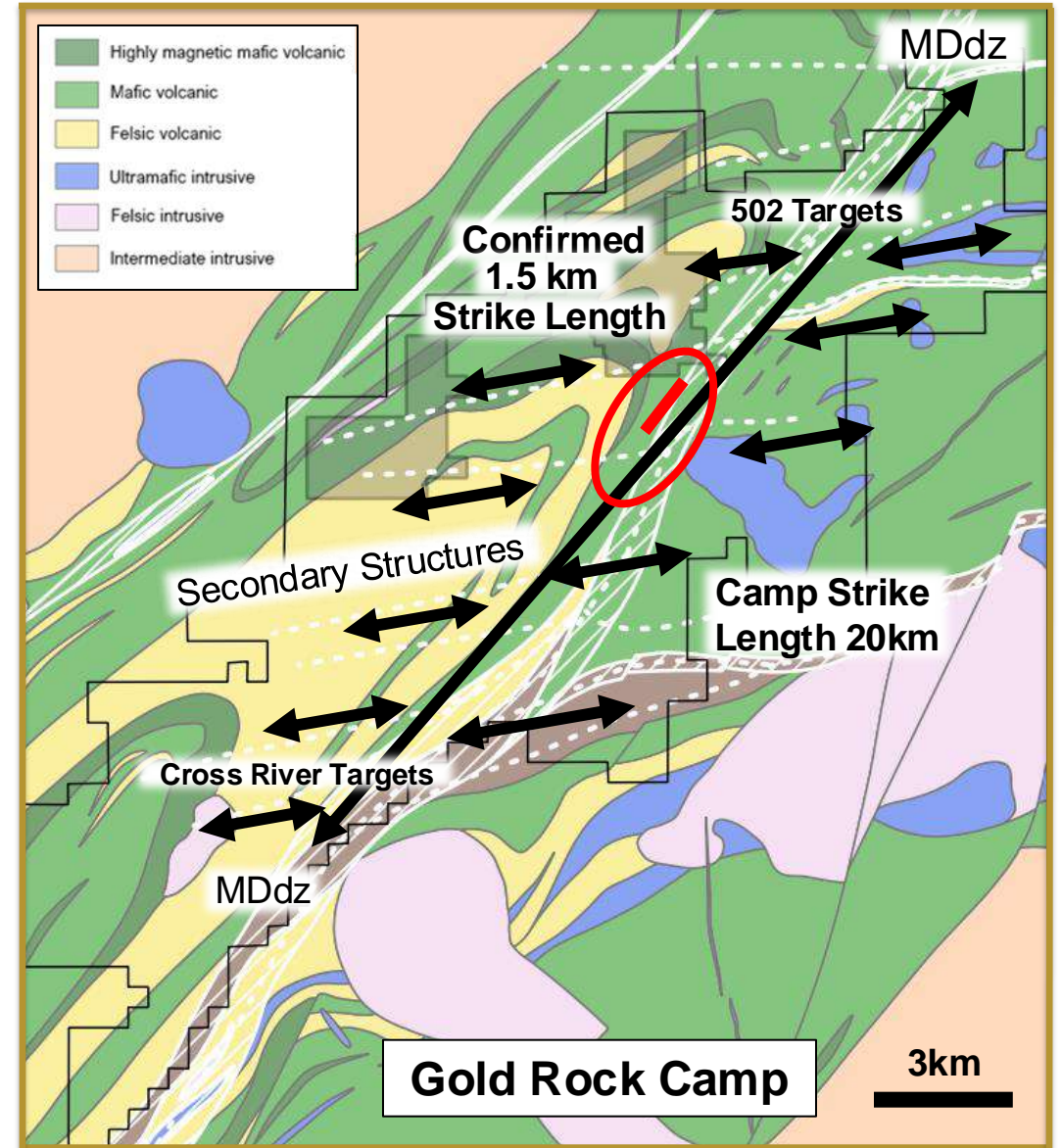
Gold Rock Camp | Interpretation & Targets

- ▲ Geophysical anomalies occur over known mineralized zones
- ▲ Interpretation uses all available geological data (geochemistry, mapping, drill data, etc.)
- ▲ Targets occur along MDdz and intersections of east-west structures
- ▲ Targets indicated potential for 20 km strike along the MDdz in the Gold Rock Camp



Gold Rock Camp | Near Surface High-Grade Gold

- ▲ Brownfield opportunity within the Gold Rock Camp
 - ▲ Majority of historic drilling focused on Gold Rock Camp
 - ▲ Historic high-grade intercepts on two gold systems
 - ▲ 75% of all historic mining occurred in Gold Rock Camp
- ▲ Potential for **large gold system** footprint
 - ▲ 20 km strike on MDdz structure in Gold Rock Camp
 - ▲ 1.5 km gold system strike **confirmed** with new drilling
- ▲ Repeating intersecting East-West Splay structures
 - ▲ Fault intersections are great traps for high-grade gold mineralization
 - ▲ Fault intersections correspond to historic gold mines and known gold occurrences throughout the Gold Rock Camp
- ▲ Regional folding **similar to Red Lake**
 - ▲ Fold hinges are great traps for high-grade gold
- ▲ Nuggety free-gold with excellent metallurgy

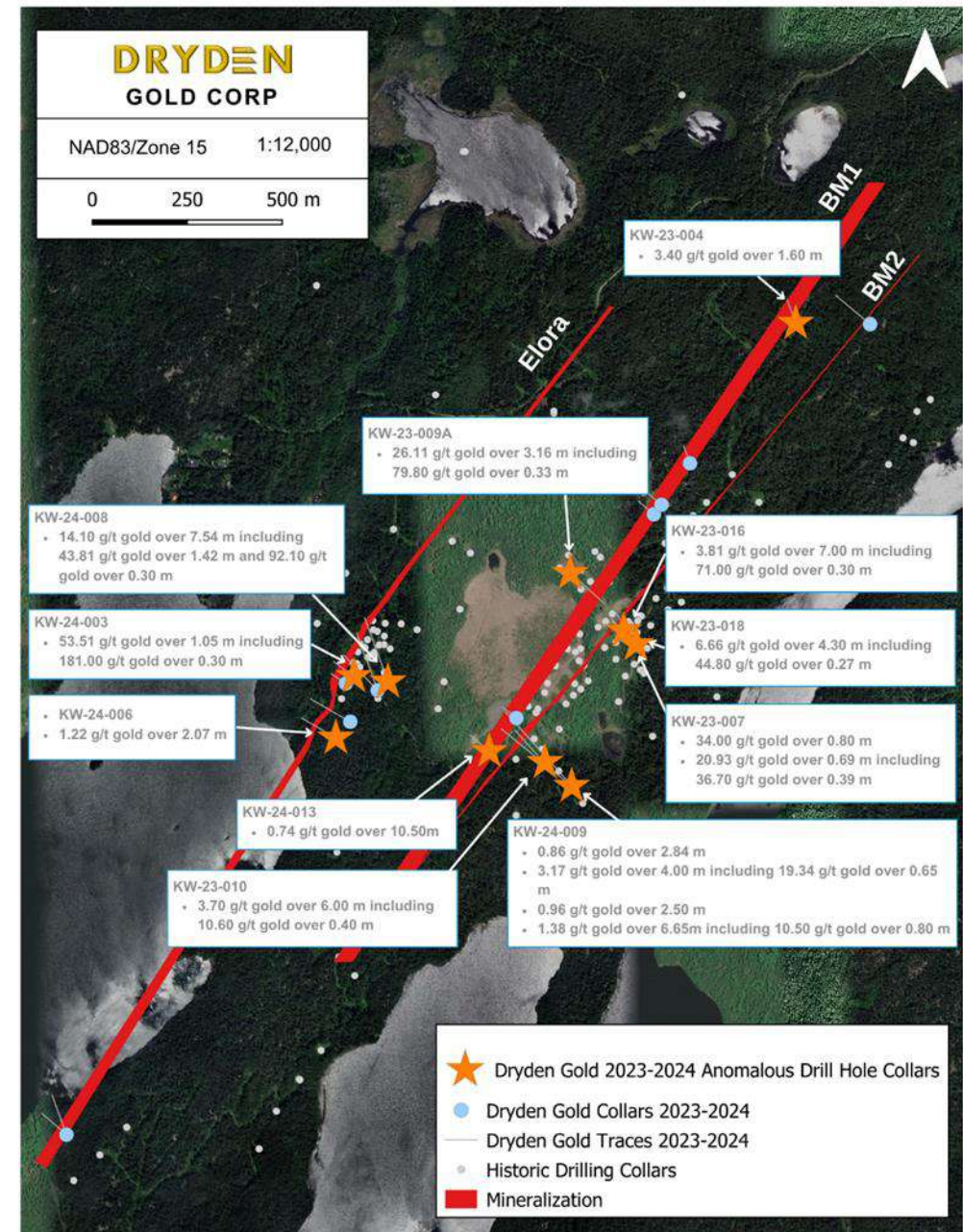


Highlights from 2023-2024 Drilling

Objectives Met



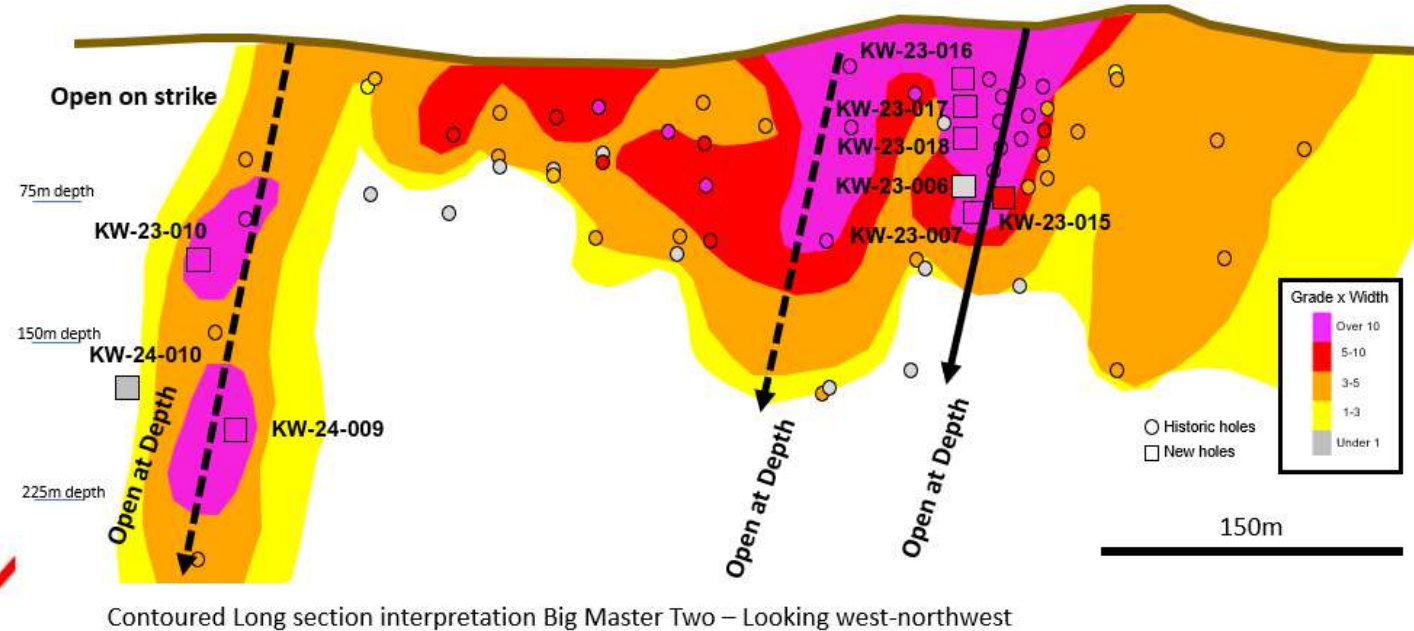
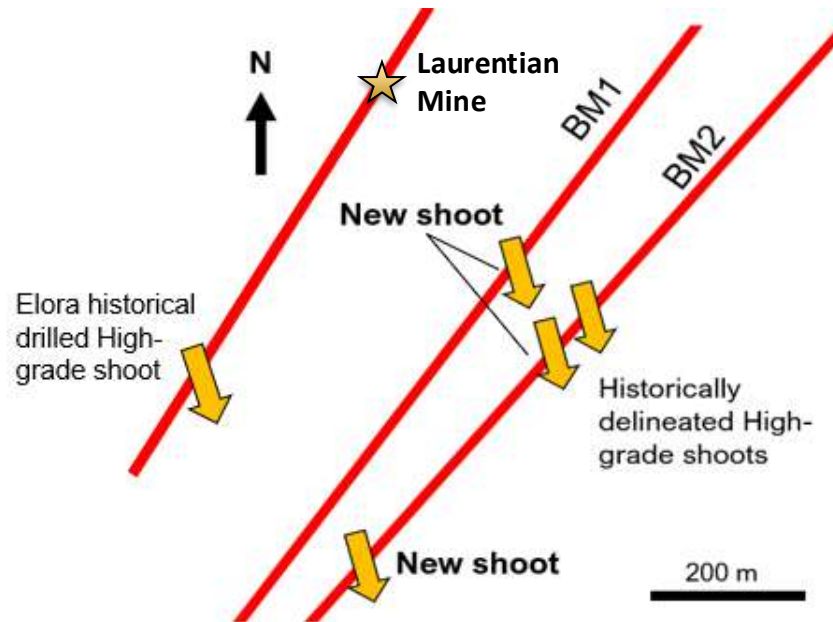
- ✓ Expansion of the Big Master and Elora gold system footprint
- ✓ Evaluate the controls of high-grade mineralization at Big Master and Elora gold systems to better predict additional high-grade shoots.
- ✓ Test for new high-grade shoots within the expanded footprint



Testing High-Grade

Confirmed orientation, structural controls and expanded a historically delineated high-grade shoot

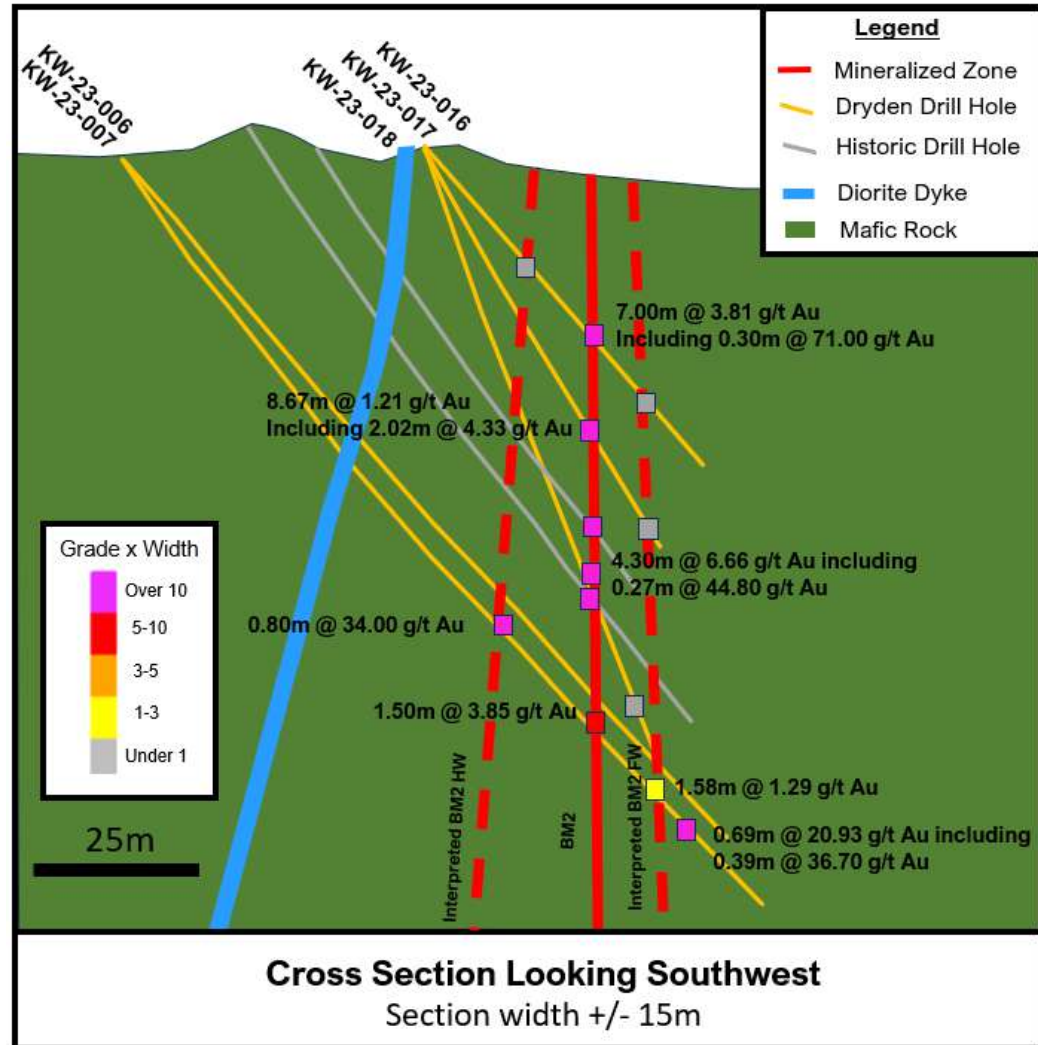
- ▲ *KW-23-016: 3.81 g/t gold over 7.00 meters, including 71.00 g/t gold over 0.30 meters*
- ▲ *KW-23-018: 6.66 g/t gold over 4.30 meters including 44.80 g/t gold over 0.27 meters*



Confirmed orientation, structural controls and expanded the Elora high-grade zone

- ▲ *KW-24-008: 14.10 g/t gold over 7.54 meters, including 43.81 g/t gold over 1.42 meters and 92.10 g/t gold over 0.30 meters*
- ▲ *KW-24-003: 53.51 g/t gold over 1.05 meters, including 181.00 g/t gold over 0.30 meters*

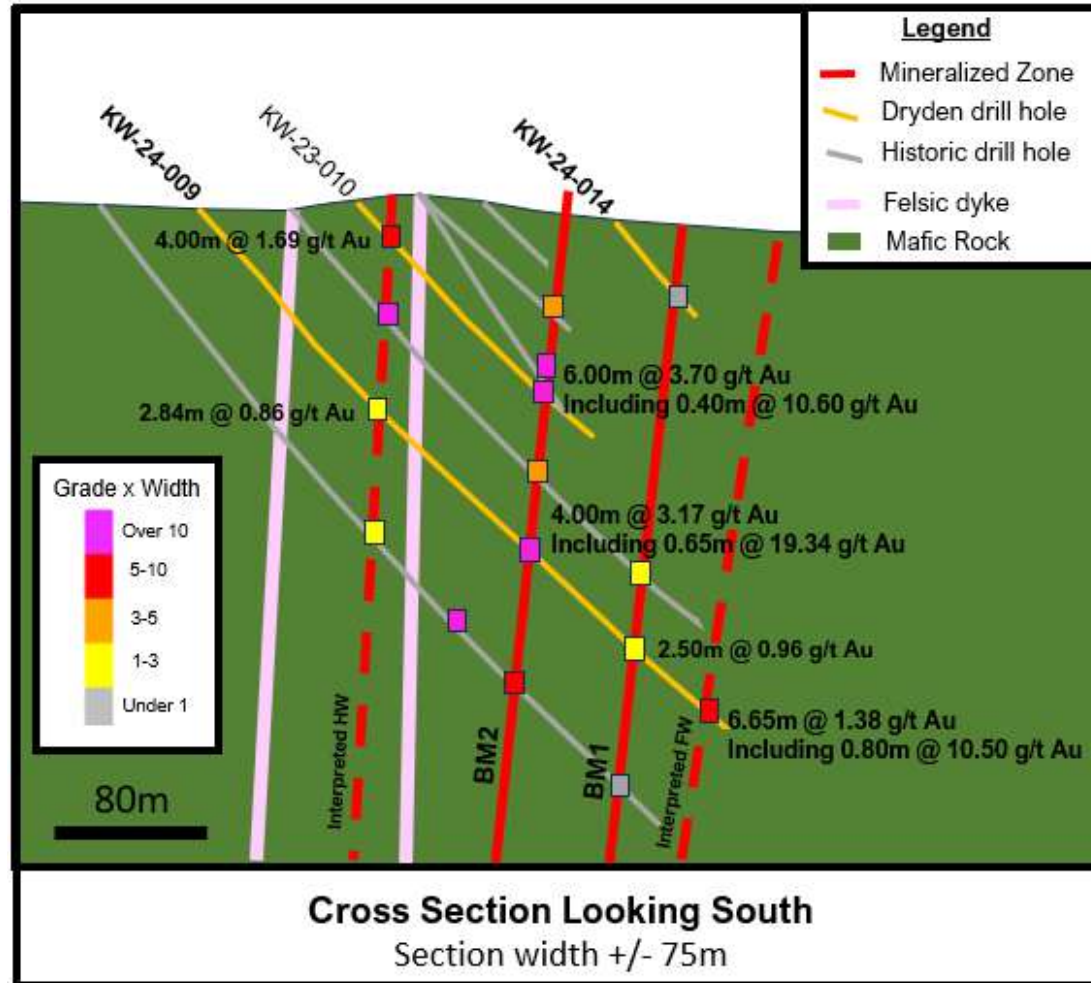
Relogging Program to Test Hanging Wall/Footwall



- ▲ Approximately 20,000 meters of historic drill core was selectively sampled & securely stored
- ▲ Previous operator either did not drill or did not assay hanging wall/footwall mineralization
- ▲ Dryden Gold intercepted high-grade hanging wall & footwall mineralization expanding the structure
- ▲ The 2018 relogging program at Great Bear was instrumental in the discovery of Central LP Footwall Zone



New High-Grade Shoot Also Intercepts Multiple Zones

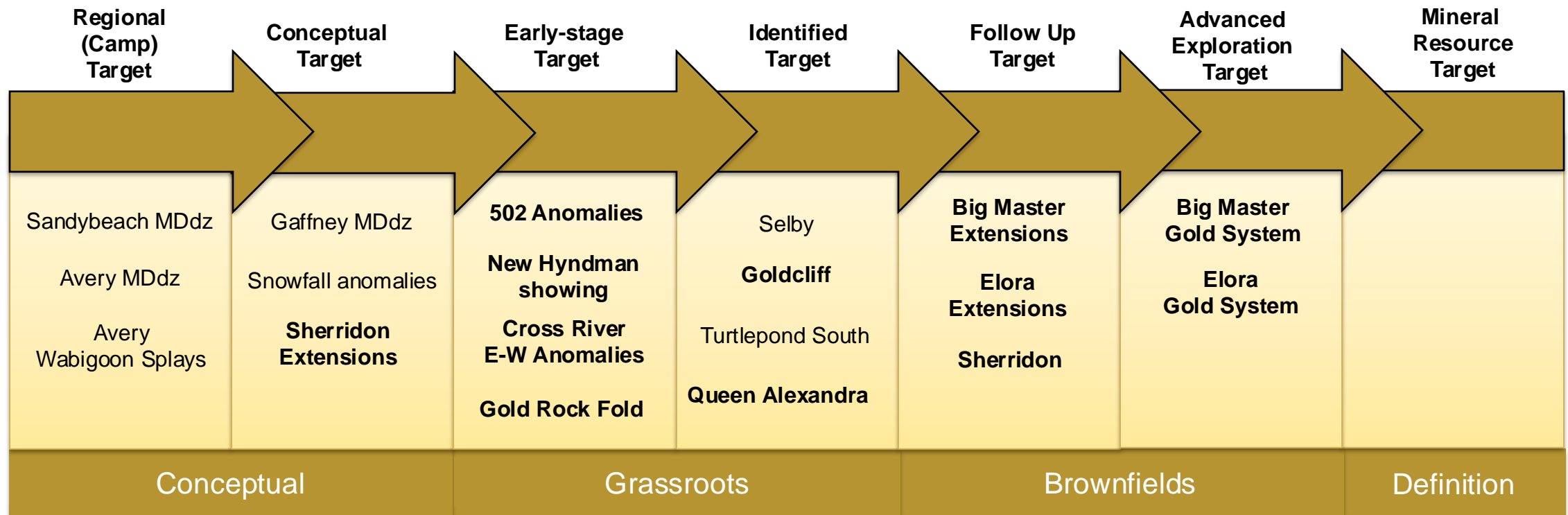


- ▲ Sheared Basalts carrying high-grade mineralization like Red Lake Mine
- ▲ Hole KW24-009 intercepted both BM1 & BM2 and demonstrates hanging wall/footwall on both vein structures
- ▲ Relogging program to also improve understanding of the continuity & controls of Big Master system including felsic dykes and alteration



Dryden Gold's Resource Pipeline

- ▲ Systematic approach to **District-Wide** exploration.
- ▲ Focusing on Gold Rock Camp **Follow-up** and **Advanced Exploration** stage targets.
- ▲ Several targets in the **Grassroots** categories will be reviewed and field tested over the summer.



Dryden Gold | 6 Month Review

▲ What We've Done

- ▲ **4,000** meters of drilling - **27 holes** of shallow drilling
- ▲ High-grade gold system with **three parallel vein structures** - 3 km strike
- ▲ **Three new high-grade shoots** discovered
- ▲ Continued district consolidation – **three property purchases** and additional staking

▲ What We've Learned

- ▲ This is a **robust gold system** with a large footprint and **near-surface, high-grade** gold
- ▲ Sheared basalts are carrying high-grade gold - similar to **Red Lake**
- ▲ The **Big Master** vein structures have significant **hanging wall** and **footwall structures**
- ▲ Mineralization is controlled by cross-cutting structures and felsic dykes

▲ New Neighbors

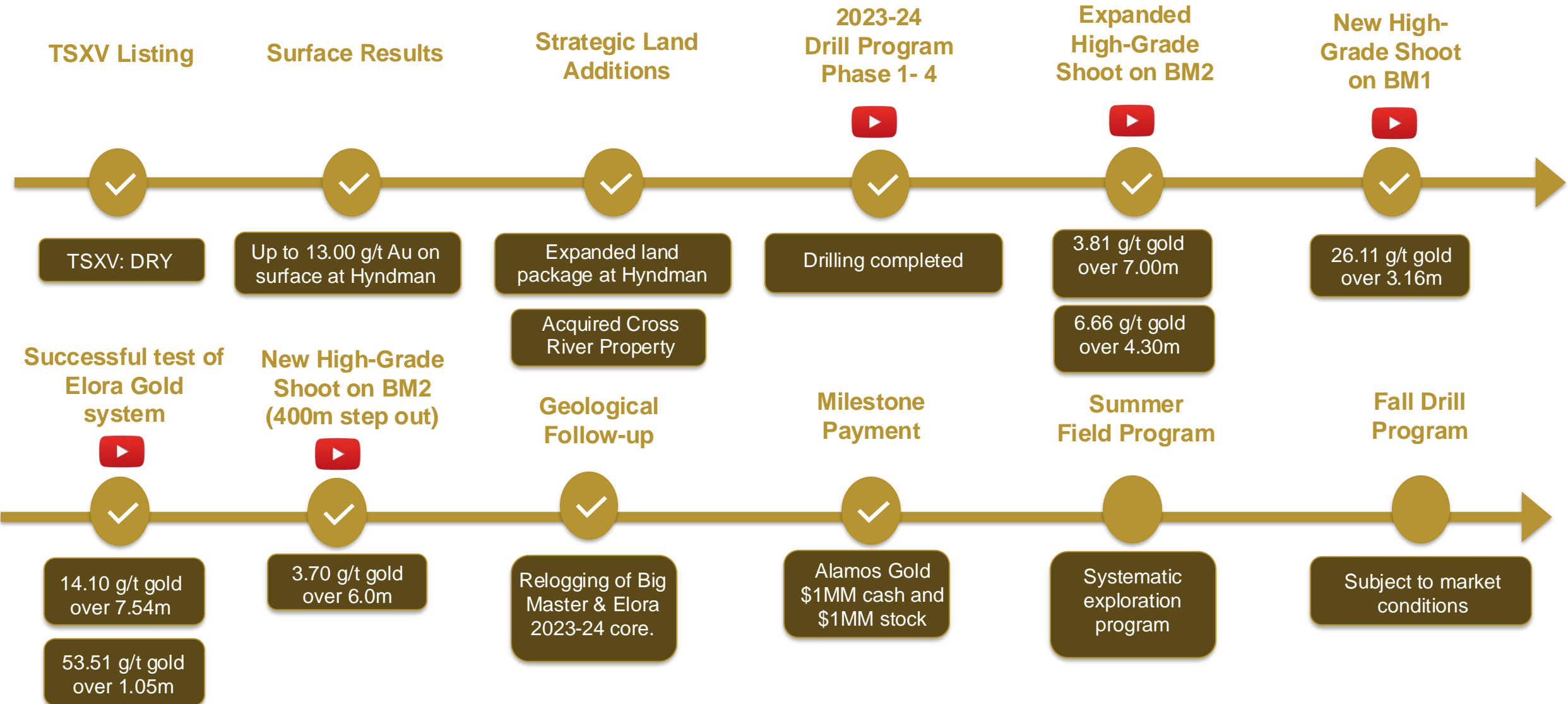
- ▲ **Kenorland Minerals** takes a significant position in the Dryden Gold District
- ▲ **Frank Guistra's** Blackwolf Copper & Gold to merge with **Treasury Metals**

▲ What's Next

- ▲ **Re-logging & sampling** of historic core – **20,000 meters** that preferentially tested quartz veins
- ▲ **Summer sampling program** and Hyndman geophysics
- ▲ Fall drill program



2024 – Milestones | 6 Month Overview





DRYDEN

GOLD CORP

TSXV: DRY | OTCQB: DRYGF
DRYDENGOLD.COM

Contact:

Trey Wasser CEO & Director
+1 (940) 368-8337
twasser@drydengold.com

Maura Kolb President & QP
+1 (807) 632-2368
mjkolb@drydengold.com

