



# Discovering and Developing Great Basin Oxide Gold

## Bringing Black Pine Back into Production

December 2024    TSX:LGD | OTCQX:LGDTF

**Liberty**gold

# Cautionary Notes & Technical Disclosures

All statements in this presentation, other than statements of historical fact, are "forward-looking information" with respect to Liberty Gold within the meaning of applicable securities laws, including statements that address resource potential quantity and/or grade of minerals, potential size of a mineralized zone, potential expansion of mineralization and resource, the timing of and results of future resource estimate, PEAs and PFSs, expected capital costs, expected gold recoveries the potential upgrade of inferred mineral resources to measured and indicated mineral resources, timing of exploration and development plans and timing of obtaining permits or completing earn-in obligations at the Company's mineral projects. Forward-looking information is often, but not always, identified by the use of words such as "seek", "anticipate", "plan", "continue", "planned", "expect", "project", "predict", "potential", "targeting", "intends", "believe", "potential", and similar expressions, or describes a "goal", or variation of such words and phrases or state that certain actions, events or results "may", "should", "could", "would", "might" or "will" be taken, occur or be achieved. Forward-looking information is not a guarantee of future performance and is based upon a number of estimates and assumptions of management at the date the statements are made including, among others, statements that address future mineral production, reserve potential, potential size and/or grade of a mineralized zone, potential expansion of mineralization, potential type(s) of mining operation; proposed timing of exploration and development plans at the Company's mineral projects; timing and likelihood of deployment of additional drill rigs; successful delivery of results of metallurgical testing; the timing of a release on an initial or updated mineral resource report on any of our operations, the timing of a PEA or a PFS; assumptions about future prices of gold, copper, silver, and other metal prices, currency exchange rates and interest rates, metallurgical recoveries, favourable operating conditions, political stability, obtaining governmental approvals and financing on time, obtaining renewals for existing licences and permits and obtaining required licences and permits, labour stability, stability in market conditions, the impact from pandemics such as that of the novel coronavirus (COVID-19), availability of equipment, accuracy of any mineral resources and mineral reserves, accuracy of any PFS, successful resolution of disputes and anticipated costs and expenditures. Many assumptions are based on factors and events that are not within the control of Liberty Gold and there is no assurance they will prove to be correct.

Such forward-looking information involves known and unknown risks, which may cause the actual results to be materially different from any future results expressed or implied by such forward-looking information, including, but not limited to, reliance of technical information provided by our joint venture partners or other third parties, changes in project parameters as plans continue to be refined; inability to upgrade inferred mineral resources to indicated or measured mineral resources or subsequently reserves; possible variations in grade or recovery rates; amount or timing of proposed production figures; current and proposed exploration and development; the costs and timing of exploration and development of new deposits; failure of equipment or processes to operate as anticipated; the failure of contracted parties to perform; future capital expenditures, exploration expenditures and other expenses for specific operations; estimated future working capital, the cost, timing and success of exploration activities generally, including the development of new deposits, the timing of the publication of any PEAs or PFSs, the timing, timeline and possible outcome of permitting or license renewal applications; government regulation of exploration and mining operations; environmental risks, including satisfaction of requirements relating to the periodic submissions of Environmental Impact Assessments; the uncertainty of negotiating with foreign governments; expropriation or nationalization of property without fair compensation; adverse determination or rulings by governmental authorities delays in obtaining governmental approvals; government regulation of exploration and mining operations; and the application thereof in accordance with the rule of law; possible claims against the Company or its joint venture partners; the impact of archaeological, cultural or environmental studies within property areas; title disputes or claims, limitations on insurance coverage; the interpretation and actual results of historical production at certain of our exploration properties; changes in project parameters as plans continue to be refined; current economic conditions; future prices of commodities; possible variations in grade or recovery rates; failure of equipment or processes to operate as anticipated; the failure of contracted parties to perform; labour disputes and other risks of the mining industry; including impacts from pandemics such as that of COVID-19; delays in obtaining governmental approvals, financing or in the completion of exploration as well as those factors discussed in the Company's Annual Information Form ("AIF") for the year ended December 31, 2023, dated March 28, 2024 under Liberty Gold's SEDAR+ profile at [www.sedarplus.ca](http://www.sedarplus.ca).

Although Liberty Gold has attempted to identify important factors that could cause actual actions, events or results to differ materially from those described in forward-looking information, there may be other factors that cause actions, events or results not to be as anticipated, estimated or intended. There can be no assurance that such information will prove to be accurate as actual results, and future events could differ materially from those anticipated in such statements. Liberty Gold disclaims any intention or obligation to update or revise any forward-looking information, whether as a result of new information, future events or otherwise. Accordingly, readers should not place undue reliance on forward-looking information.

Peter Shabestari, CPG, Vice President of Exploration, Liberty Gold and Qualified Person under National Instrument 43-101 ("NI 43-101"), has reviewed and approved the contents of this presentation. Mr. Shabestari has verified the data disclosed including sampling, analytical, and test data underlying the drill results, using a variety of techniques including comparison against independently sourced assay certificates, site visit investigations, and digital based verification tests, and he consents to the inclusion in this release of said data in the form and context in which it appears.

The mineral resource estimates referred to in this presentation have been calculated using the Canadian Institute of Mining, Metallurgy and Petroleum ("CIM") "Standards on Mineral Resources and Reserves, Definitions and Guidelines" dated May 10, 2014, prepared by the CIM Standing Committee on Reserve Definitions and adopted by CIM.

Unless stated otherwise, information of a scientific or technical nature in this presentation regarding the Black Pine property is summarized, derived or extracted from, the following technical report:

"Black Pine Project NI 43-101 Technical Report, Oneida County, Idaho, USA", effective June 1, 2024, and dated November 21, 2024, prepared by Matthew Sletten, P.E. of M3 Engineering & Technology Corp.; Benjamin Bermudez, P.E. of M3 Engineering & Technology Corp.; Todd Carstensen, RM-SME of AGP Mining Consultants, Inc.; Richard DeLong, M.S.,P.G., MMSA of Westland Engineering & Environmental Services Inc.; Nicholas T. Rocco, Ph.D., P.E. of NewFields Companies LLC.; Gary L. Simmons, MMSA of GL Simmons Consulting, LLC.; and, Valerie Wilson, P.Geo. of SLR Consulting Ltd.

Information of a scientific or technical nature in this presentation regarding our Goldstrike property can be found in the following report:

"Preliminary Economic Assessment and Independent Technical Report for the Goldstrike Project, Washington County, Utah USA", effective February 8, 2018, and signed July 16, 2018, prepared by SRK Consulting (Canada) Inc., of Vancouver, British Columbia, Golder Associates Inc. of Reno, Nevada, Kappes Cassiday and Associates of Reno, Nevada, Advantage Geoservices of Osyooyo, British Columbia and GL Simmons Consulting, LLC. of Larkspur, Colorado.

Each technical report has been filed under the Company's issuer profile on SEDAR+ at [www.sedarplus.ca](http://www.sedarplus.ca) and on Liberty Gold's website at [www.libertygold.ca](http://www.libertygold.ca)

## Cautionary Note to United States Investors Concerning Estimates of Measured, Indicated and Inferred Resources

The information in this document, including any information incorporated by reference, and disclosure documents of Liberty Gold that are filed with Canadian securities regulatory authorities concerning mineral properties have been prepared in accordance with the requirements of securities laws in effect in Canada, which differ from the requirements of United States securities laws.

Without limiting the foregoing, these documents use the terms "measured resources", "indicated resources", "inferred resources" and "probable mineral reserves". Shareholders in the United States are advised that, while such terms are defined in and required by Canadian securities laws, the United States Securities and Exchange Commission (the "SEC") does not recognize them. Under United States standards, mineralization may not be classified as a reserve unless the determination has been made that the mineralization could be economically and legally produced or extracted at the time the reserve determination is made. United States investors are cautioned not to assume that all or any part of measured or indicated resources will ever be converted into reserves. Further, inferred resources have a great amount of uncertainty as to their existence and as to whether they can be mined legally or economically. It cannot be assumed that all or any part of the inferred resources will ever be upgraded to a higher resource category. Under Canadian rules, estimates of inferred mineral resources may not form the basis of feasibility, pre-feasibility or other technical reports or studies, except in rare cases. Therefore, United States investors are also cautioned not to assume that all or any part of the inferred resources exist, or that they can be mined legally or economically. Disclosure of contained ounces is permitted disclosure under Canadian regulations; however, the SEC normally only permits issuers to report resources as in place tonnage and grade without reference to unit measures. Accordingly, information concerning descriptions of mineralization and resources contained in these documents may not be comparable to information made public by United States companies subject to the reporting and disclosure requirements of the SEC.

Accordingly, information contained herein describing the Company's mineral deposits may not be comparable to similar information made public by U.S. companies subject to the reporting and disclosure requirements under the United States federal securities laws and the rules and regulations thereunder.

## Definitions:

"Au" = gold, "oz" = ounces, "m" = meters, "km" = kilometers, "km<sup>2</sup>" = square kilometers, "g/t" = grams per tonne, "AFA" = annual acre feet, "PQ" = core drill holes, "C\$" = Canadian dollars, "US \$" or "\$" = United States dollars, "PFS" = Pre-Feasibility Study, "PEA" = Preliminary Economic Study, "MV" = Megavolts, "KW" = Kilowatts, "lbs" = pounds, "koz" = thousand ounces, "\$M" = one million United States dollars,

## Non-GAAP Measures and Other Financial Measures

Alternative performance measures are furnished to provide additional information. These non-GAAP performance measures are included in this presentation because these statistics are key performance measures that management uses to monitor performance, to assess how the Company is performing, to plan and to assess the overall effectiveness and efficiency of mining operations. These performance measures, including Initial Capital Costs, Total Cash Costs, and All-In Sustaining Costs, do not have a standard meaning within International Financial Reporting Standards ("IFRS") and, therefore, amounts presented may not be comparable to similar data presented by other mining companies. Each of these measures used are intended to provide additional information to the user and should not be considered in isolation or as a substitute for measures prepared in accordance with IFRS.

The non-IFRS financial measures used in this presentation and common to the gold mining industry are defined below:

**Initial Capital Costs** is defined as capital required to develop, construct and to bring the Project to commercial production. **Total Cash Costs** are reflective of the cost of production. Total Cash Costs reported in the PFS include mining costs, processing, on-site general & administrative costs, treatment & refining costs, and royalties. **Total Cash Costs per Ounce** is calculated as Total Cash Costs divided by total LOM payable gold ounces. **All-in Sustaining Costs ("AISC")** is reflective of all of the expenditures that are required to produce an ounce of gold from operations. AISC reported in the PFS includes Total Cash Costs, sustaining capital and closure costs. **AISC per Gold Ounce** is calculated as AISC divided by total LOM payable gold ounces.

# Liberty Gold – Discovering and Developing Great Basin Oxide Gold

## Experienced Value Creation Team

- Proven ability to discover, define and develop high-quality assets
- Realizing value from non-core assets & redeploying capital into the Great Basin

## The Great Basin - A 'Tier 1' Jurisdiction

- Massive gold endowment with high-quality gold exposure at generally lower risk than comparable regions
- Supportive communities and governments

## Black Pine: A Large-Scale Oxide Gold Project

- Past producing, open pit, heap leach oxide gold mine in SE Idaho
- **2024 PFS: 2.2 Moz gold production over 17 years; \$550 Million After-Tax NPV (5%) and 32% After-Tax IRR; 3.3-year payback; 183 thousand oz/yr for 1 to 5 years at 0.45 g/t head grade** <sup>(1)</sup>
- Development pathway aimed at environmentally simple, technically straightforward project with supportive local communities

<sup>(1)</sup> See press releases dated [October 10, 2024](#), and [November 13, 2024](#)

## Capital Structure

Shares Outstanding	381.2 M
Options	17.9 M
Warrants ( <i>exercise price C\$0.45, expire May 21, 2026</i> )	17.9 M
Fully Diluted ( <i>Includes 7.8 million RSUs &amp; 4.9 million DSUs</i> )	429.7 M
Market Capitalization ( <i>C\$0.28 closing on TSX on Nov 13, 2024</i> )	C\$112.3M
Cash & Short-term Investments ( <i>per MD&amp;A dated Nov 13, 2024</i> )	US\$11 M

## Share Ownership

Institutions and Funds	42.9%
Wheaton Precious Metals	5.2%
Management and Insiders	4.5%

## Analyst Coverage

Steve Therrien 3L CAPITAL	Brian Quast BMO Capital Markets	Peter Bell cg/ Capital Markets
Lauren McConnell PARADIGM CAPITAL	Rabi Nizami NATIONAL BANK FINANCIAL MARKETS	Alex Terentiew Ventum Capital Markets

# The Liberty Gold Team

## Board of Directors



**Rob Pease – Board Chair**  
Former President & CEO of Sabina Gold & Silver; Former Strategic Advisor and Director of Richfield Ventures; Former President & CEO of Terrane Metals



**Cal Everett – CEO & Director**  
Founder, former President & CEO of Axemen Resource Capital; Former Institutional Sales & Capital Markets at PI Financial;



**Wendy Louie, CPA, CA**  
Former VP Finance and CFO of Sabina Gold & Silver; Former VP Finance of Goldcorp Inc.



**Lisa Wade**  
Former VP, Environmental, Reclamation and Closure at Goldcorp Inc.; Formerly with Newmont, environmental & social matters



**Greg Etter**  
Former SVP, Global Government Relations, Security and Lands of Kinross Gold; Former VP and Executive Aide to the Chairman of Newmont Mining



**Barbara Womersley**  
Chartered Professional in Human Resources; Formerly with Barrick Gold, Lundin Mining and Yukon Zinc

## Management



**Jon Gilligan – President & Chief Operating Officer**  
Former VP for Torex Gold; Former VP Technical Services, Exploration and Projects Development for SSR Mining; Senior roles in technical services and mine operations at BHP



**Peter Shabestari – VP Exploration**  
Former Senior Geologist for Fronteer Gold; Former Project Geologist for BHP, Kinross and AngloGold



**Joanna Bailey – CFO & Corporate Secretary**  
Formerly with PricewaterhouseCoopers LLC; Former Finance Team for Fronteer Gold



**Matthew Zietlow – Director, Regulatory Affairs & Sustainability**  
Formerly with Coeur Mining; Served as State chair of the Nevada Mining Association Executive Environmental Committee.



**Darin Smith – Senior VP Corporate Development**  
Former VP Corporate Development Kirkland Lake Gold; Former Investment Banker BMO Capital Markets

# A Transformative Year

## ACHIEVEMENTS

- ✓ **Release Black Pine Pre-Feasibility Study:**
  - ✓ 2024 PFS: 2.2 Moz gold production over 17 years; \$550 million After-Tax NPV (5%) and 32% After-Tax IRR; 3.3-year payback<sup>(1)</sup>
  - ✓ Track record of **OXIDE GOLD** resource growth
- ✓ **Increase the Black Pine Project Footprint:** Amended Plan of Operations with a 36% increase to drill access area
- ✓ **Drill for Discovery at Black Pine:** 20,000 metre drill program commenced targeting extensions to gold mineralization beneath shallow cover
- ✓ **Build an experienced mine permitting team:** Matt Zietlow, Director, Regulatory Affairs & Sustainability joins the company
- ✓ **Divestment of the TV Tower Project, Türkiye and US\$3.7 million received:** Additional bank guaranteed payments of US\$2.2 million in Q4 '25, and US\$2.6 million in Q4 '26

<sup>(1)</sup> See press releases dated [October 10, 2024](#), and [November 13, 2024](#)



## UPCOMING CATALYSTS

- **Submit Black Pine Mine Plan of Operations in Q4:** Start US Federal permitting with a fast-track path to production
- **Optimize Goldstrike:** De-risk project process water supply and evaluate Antimony Ridge; additional scoping on the resource

# Black Pine South Eastern Idaho



# Black Pine Gold Project PFS

Large Reserve  
Growing Resource  
High Grade Core

BLACK PINE MINE

HARD HATS  
SAFETY GLASSES  
AND  
STEEL TOE SHOES  
REQUIRED

**3.11** Moz Gold

Probable

Mineral Reserves @ \$1,650/oz Au<sup>1</sup>

**4.16** Moz Gold

Indicated

**0.71** Moz Gold

Inferred

Mineral Resources @ \$2,000/oz Au, inclusive of Reserves<sup>1</sup>

**1.75** Moz Gold

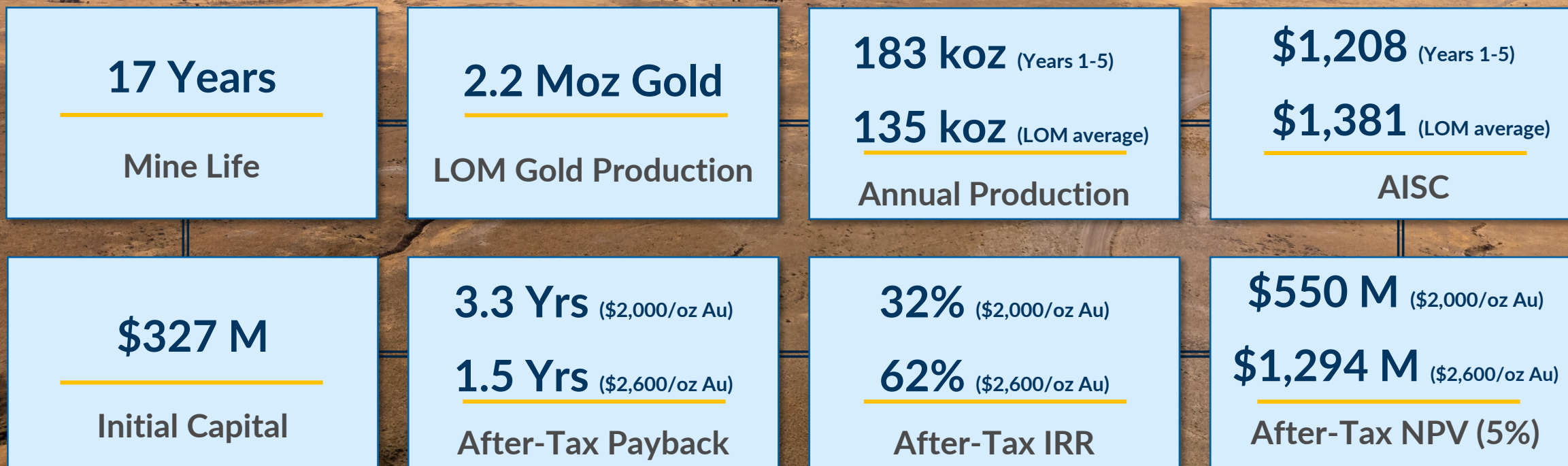
Indicated @ 1.0 g/t Au avg grade

0.5 g/t Au cut-off within Resource Pit

<sup>1</sup> Mineral Reserves are converted from Mineral Resources through the process of pit optimization, pit design, production scheduling, stockpiling and cut-off grade optimization. Mineral Reserves are reported to a cut-off grade of 0.10 g/t gold and are based on a gold price of US\$1,650/oz. Mineral Resources are reported within conceptual open pits estimated at a gold cut-off grade of 0.10 g/t, using the PFS pit slope parameters, a long-term gold price of US\$2,000 per ounce and the PFS variable gold leach recovery model derived from extensive metallurgical studies See press release dated October 10, 2024, and Endnotes slide in this presentation.

# Black Pine Gold Project Pre-Feasibility Study

Low capital intensity, long-lived open-pit, run-of-mine heap leach project



NOTE: See press releases dated October 10, 2024, and November 13, 2024, for further detail



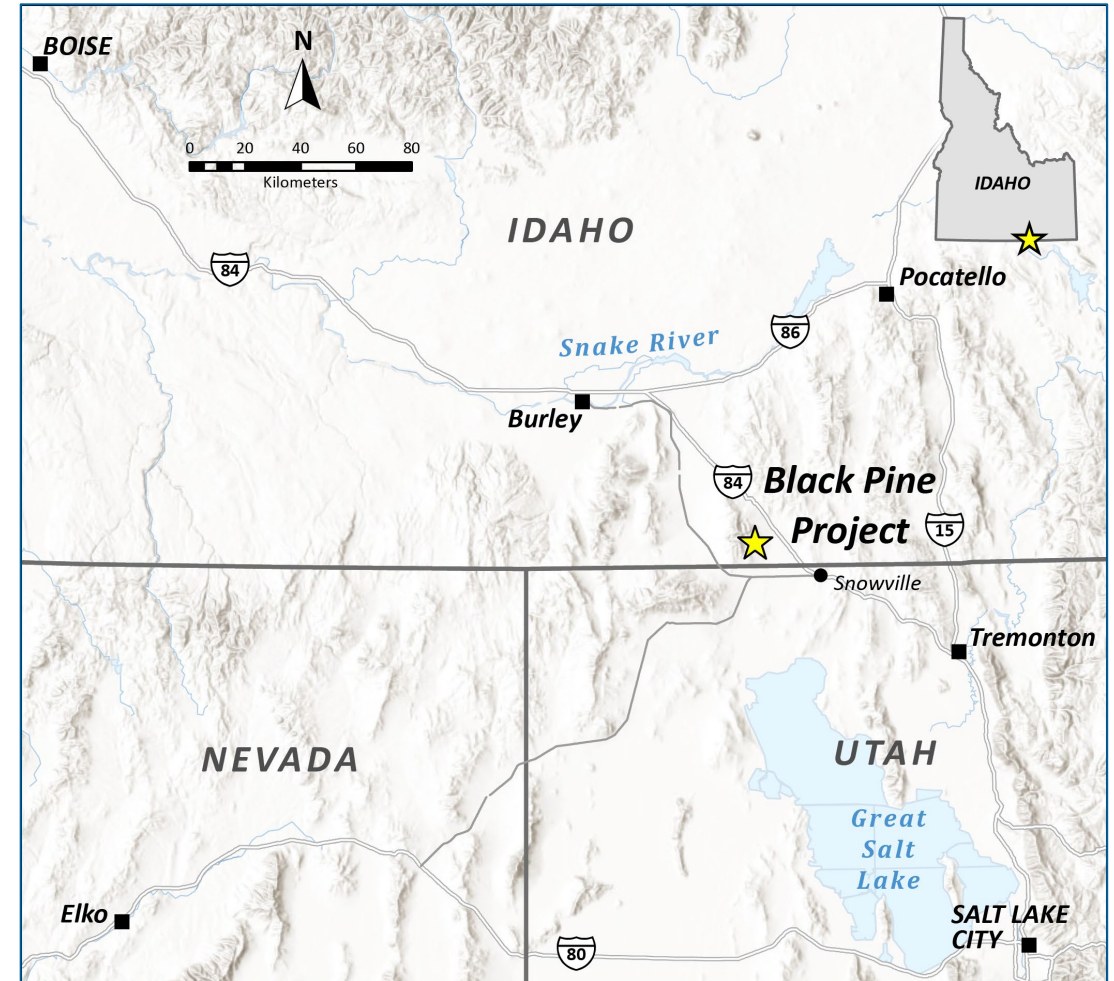
# Black Pine Gold Project PFS – Summary & Location

## Technically Simple and De-Risked Project

- Located in Idaho with excellent project access and strong local community relationship
- 100% of water rights secured
- Power supply at mine gate
- No timber values, no threatened nor endangered species, no groundwater in proposed mine pits, no surface water

## Pre-Feasibility Study Confirms:

- Low capital intensity, low operating cost
- Open-pit, run-of-mine, heap-leach operation
- Processing ~300 million tonnes of Carlin-style oxide gold ore over a 17-year mine life
- Attractive project economics with short pay-back period and strong leverage to gold price



# Black Pine Gold Project PFS – Gold Production & Cost Profile

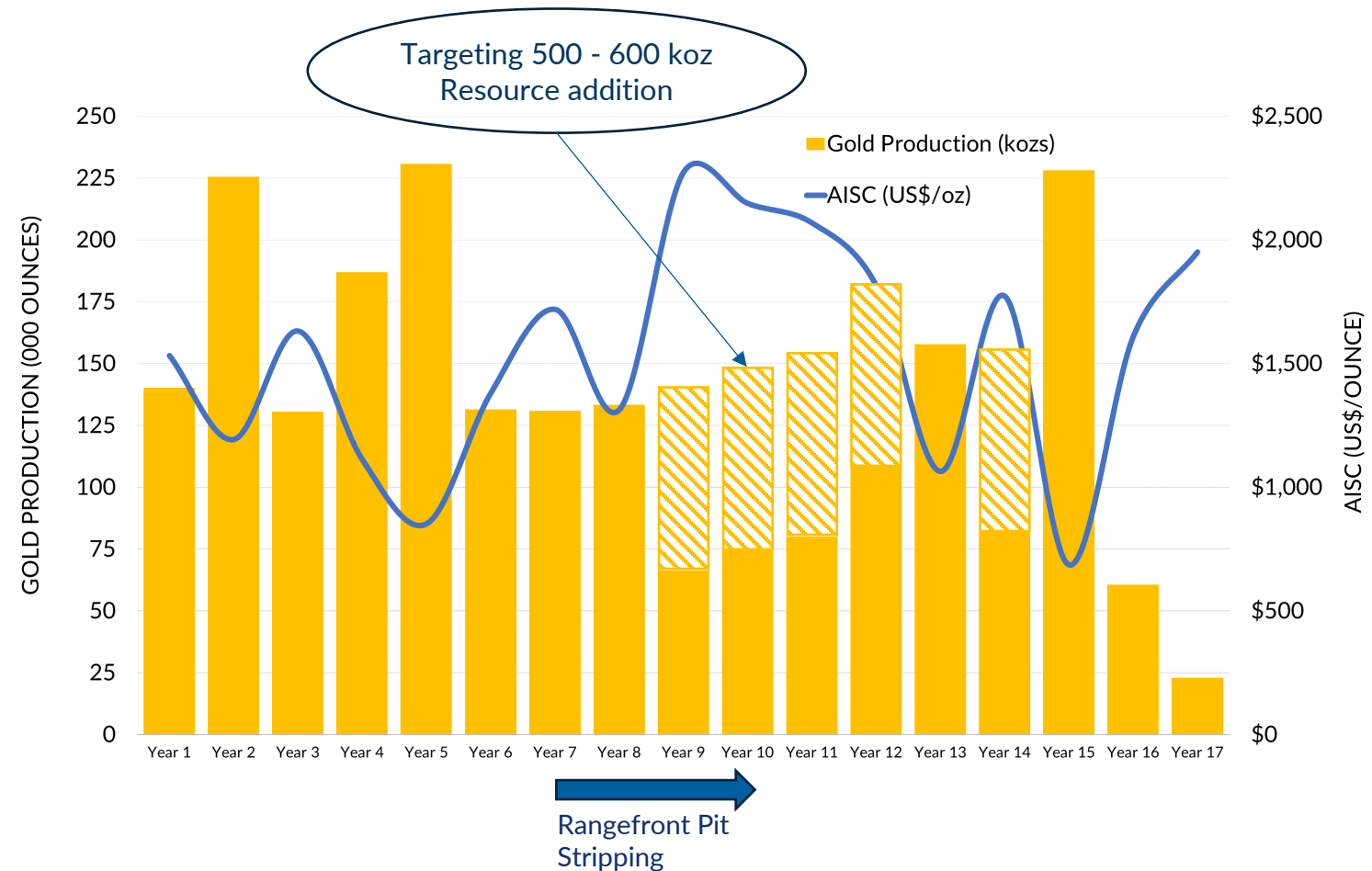
## Production Profile

Mine Life	17 years
Total Gold Ounces Mined	3,110 koz
Total Gold Ounces Recovered	2,191 koz
Average Annual Gold Production (Yr 1-5)	183 koz
Peak Annual Gold Production	231 koz
Average Annual Gold Production (LOM)	135 koz
Ore to Leach Pad	50,000 tpd
Total Tonnes of Ore to Leach Pad	299 Mt
Head Grade (years 1-5)	0.45 g/t
Head Grade (LOM)	0.32 g/t
Strip Ratio (Waste:Ore)	1.3:1
Average Gold Recovery	70.4%

## Operating Costs

LOM AISC <sup>(1)</sup>	\$1,381/oz
LOM Total Cash Cost <sup>(1)</sup>	\$1,250/oz

## Strong Early Years Production Profile with a Long Mine Life



<sup>(1)</sup> Refer to "Non-GAAP Measures and Other Financial Information" in this presentation's [Cautionary Notes & Technical Disclosures](#)

# Black Pine Gold Project PFS – Capital & Operating Costs

## Simple Operation with Low Unit Operating Costs

- Open pit, run-of-mine (no crushing or agglomeration) heap leach operation with low LOM strip ratio of 1.3:1 (waste:ore), reflects low technical risk of the proposed project
- Low LOM unit operating cost of \$9.11 per tonne processed
- Phased heap leach pad design and lease financing of mine equipment reduces initial capital

Capital Costs	Initial US\$ M	Sustaining US\$ M	Total US\$ M
Pre-stripping and Stockpile <sup>(1)</sup>	\$89.3	\$0.0	\$89.3
Mine <sup>(2)</sup>	\$31.4	\$56.4	\$87.8
Process	\$161.4	\$121.3	\$282.6
Contingency	\$35.3	\$31.4	\$66.7
Owners Cost	\$9.2	\$10.6	\$19.8
<b>Total Capital Costs</b>	<b>\$326.6</b>	<b>\$219.8</b>	<b>\$546.3</b>
Closure Cost			\$54.4

<sup>(1)</sup> 13 million tonnes of ore stockpiled during pre-stripping

<sup>(2)</sup> Includes downpayment for lease financing of mine equipment

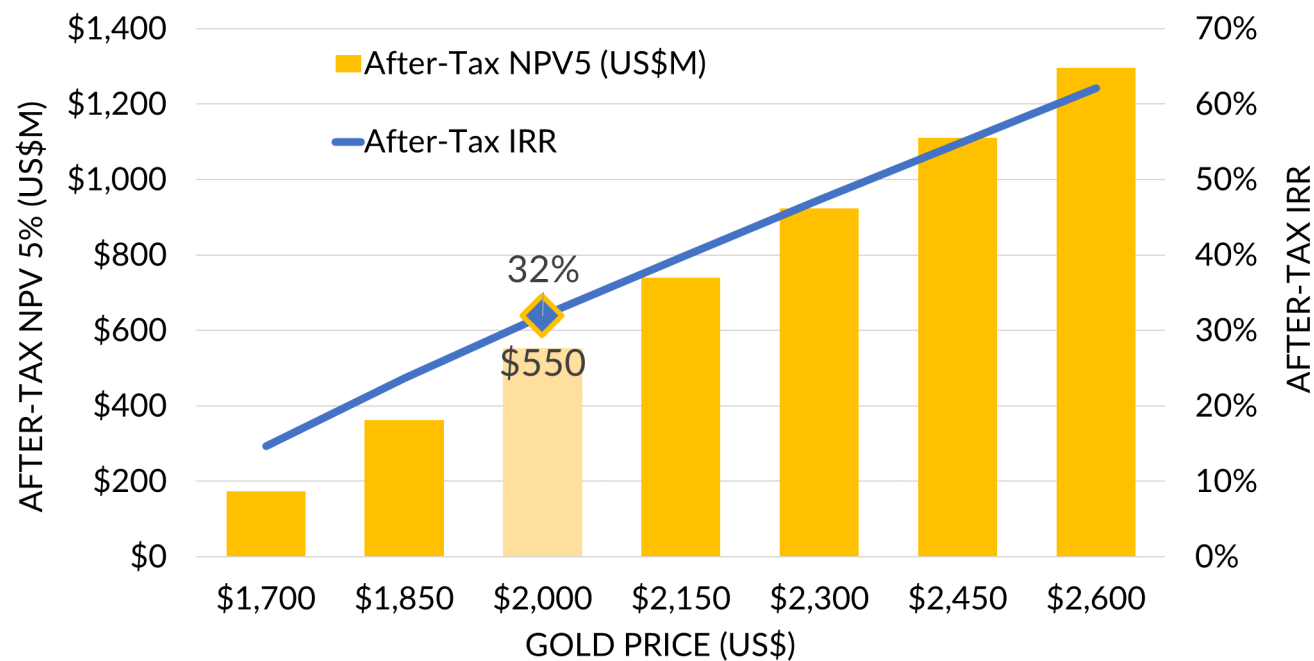
Operating Costs	LOM US\$ M	Unit Costs US\$/tonne ore
Mining <sup>(1)</sup>	\$1,946	\$6.50
Process Plant	\$538	\$1.80
G&A	\$220	\$0.73
Refining	\$22	\$0.07
<b>Total Operating Cost</b>	<b>\$2,726</b>	<b>\$9.11</b>

<sup>(1)</sup> Assumes lease financing of mining equipment

# Black Pine Gold Project PFS – Leverage to Gold Price

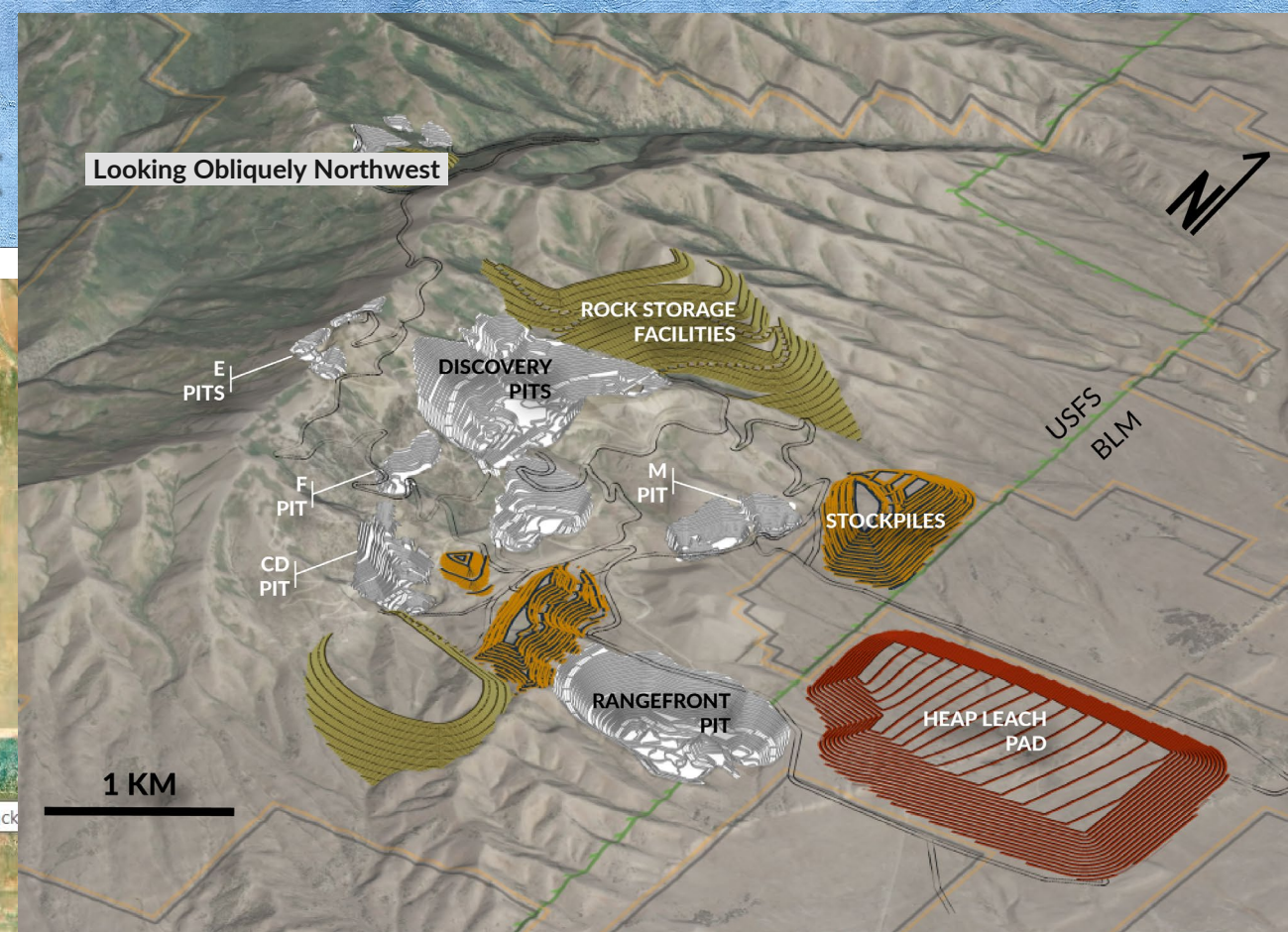
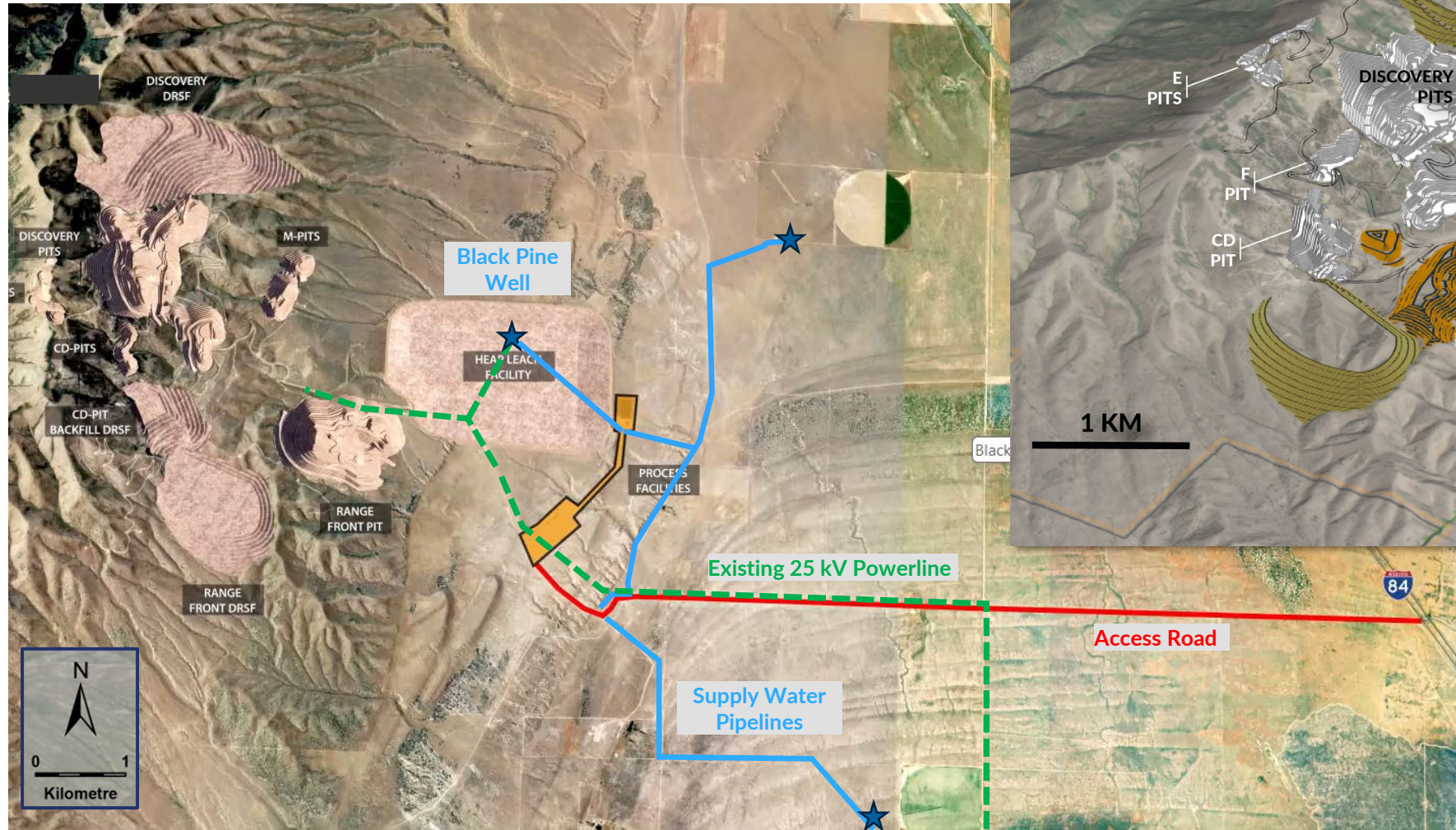
## Attractive Project Economics

- After-tax NPV (5%) of **\$550** million and IRR of **32%** with a **3.3** year payback of initial capital at the base case gold price of **\$2,000/oz**
- The PFS has targeted a “front-end loaded”, **maximum IRR/minimum payback** strategy for the base case mine plan
- After-tax NPV (5%) increases to **\$1,294** million and IRR to **62%** with payback period reduced to **1.5** years at a gold price of **\$2,600/oz**
- **~US\$120 million** NPV (5%) increase and **~5% IRR** increase for every **\$100** increase in gold price



Gold Price (\$/oz)	\$1,700	\$1,850	\$2,000	\$2,150	\$2,300	\$2,450	\$2,600
After-Tax NPV5 (\$M)	\$172	\$361	\$550	\$737	\$922	\$1,108	\$1,294
After-Tax IRR	15%	24%	32%	40%	47%	55%	62%
Payback (years)	4.3	3.8	3.3	2.5	1.8	1.7	1.5

# Black Pine PFS – Site Layout

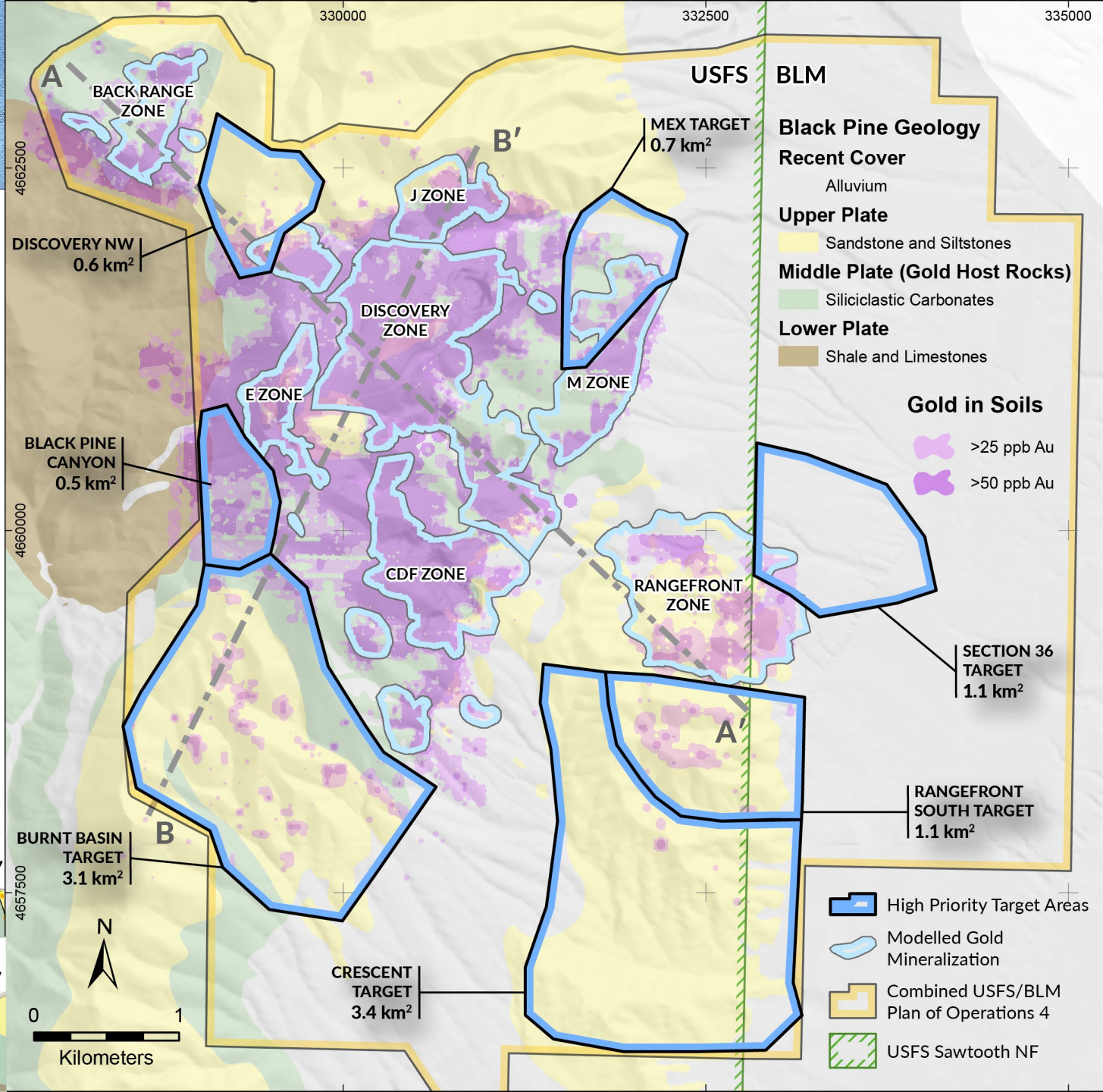
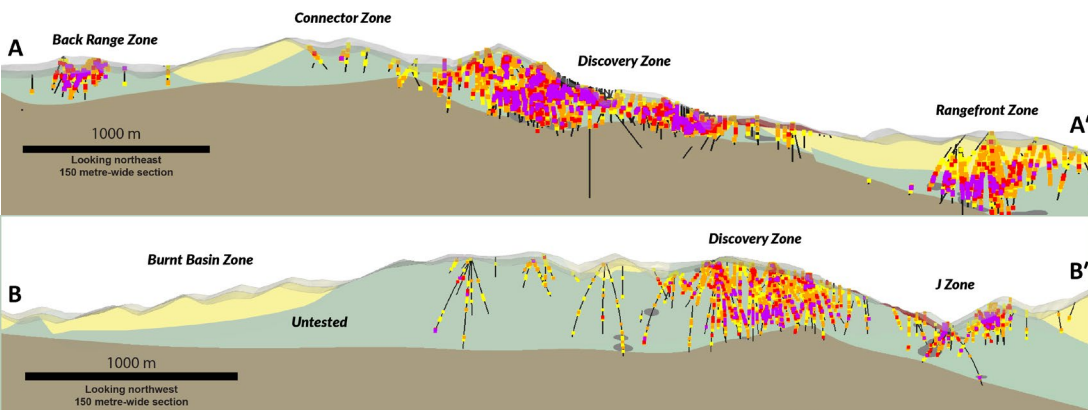


# Black Pine Feasibility Drilling

2024 in-fill drill program in progress targeting Resource conversion to Probable Reserves

2024 exploration drill program testing extensions and parallel gold trends in Middle plate rocks at seven targets:

- Rangefront, Rangefront South, Crescent:
  - **First Pass Drilling Complete**
- Burnt Basin, MEX Target:
  - **First Pass Drilling Complete**
- Section 36:
  - **Leach Pad Condemnation Drilling Complete**
- Discovery NW, Black Pine Canyon:
  - **Planned 2025**



# Black Pine Gold Project PFS – Indicative Project Timeline



# Black Pine Key Takeaways

- Environmentally responsible, technically straightforward mine re-start project with supportive local communities
- Low capital intensity; Low strip; Low operating cost; Low royalty burden
- Attractive PFS economics with leverage to gold price
- Operational flexibility to respond to prevailing gold price
- Permitting - Submit Mine Plan of Operations Q4 2024
- Initiate Feasibility in 2025 for 2026 completion
- Extensive +35km<sup>2</sup> gold mineralizing system points to on-going significant discovery opportunity

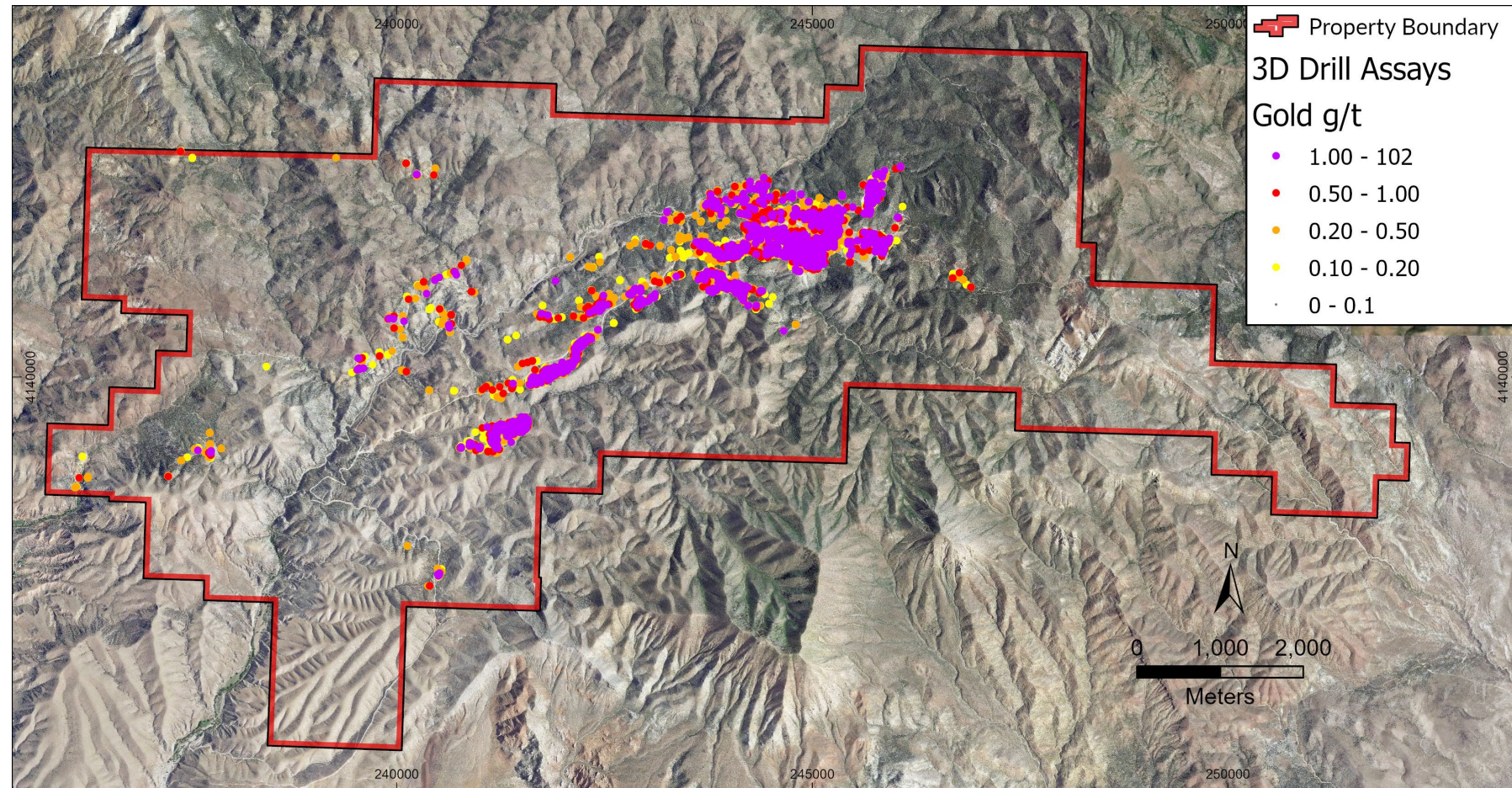


# Goldstrike Southwestern Utah



# Goldstrike Overview

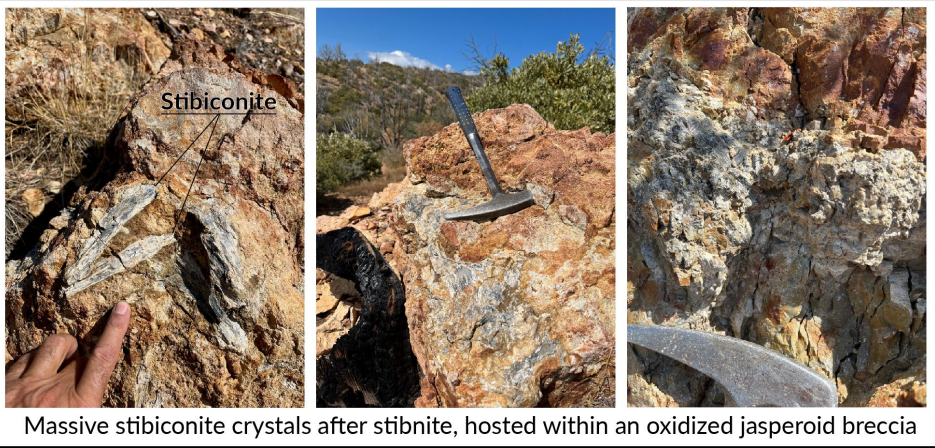
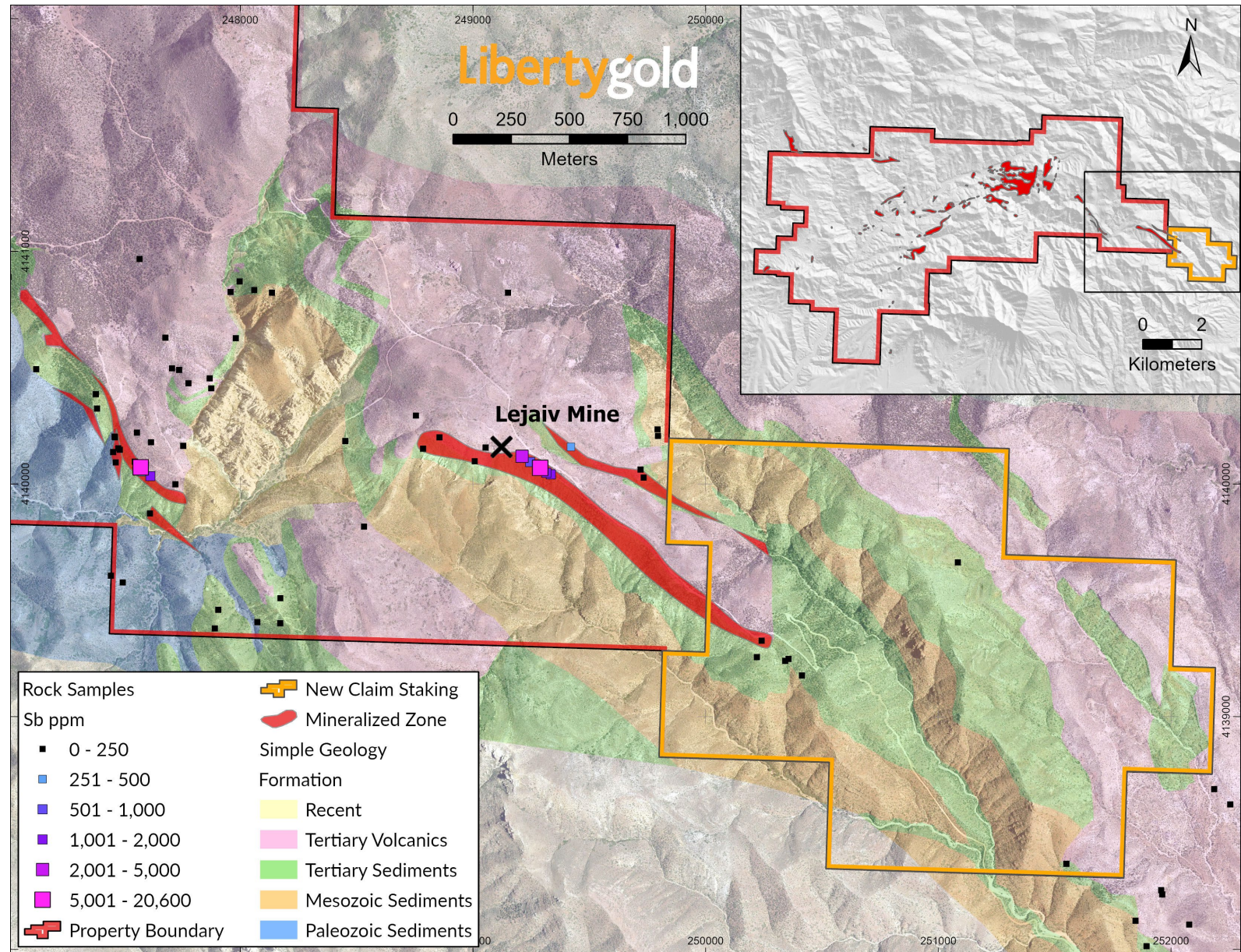
- Located in Southwestern Utah, 50 km by road NW of St. George
- Sediment hosted oxide gold project
- Previously mined and reclaimed
- No significant environmental issues; no water in the mineralized area; no threatened nor endangered species
- BLM surface rights, unpatented claims & patented mineral leases
- Internal update to 2018 Mineral Resource & Scoping in progress
- Process water supply de-risking in progress
- Re-evaluating the extent of the critical mineral antimony



# Antimony Ridge Prospect

## Goldstrike Oxide Project

- Antimony (Sb) declared a Critical Mineral in the US in 2020
- Known Au/Sb occurrences on the east end of the property
- Gold focused surface sampling up to 2% Sb in oxidized jasperoid breccia
- 2 kilometers of prospective Sb-mineralized jasperoid identified



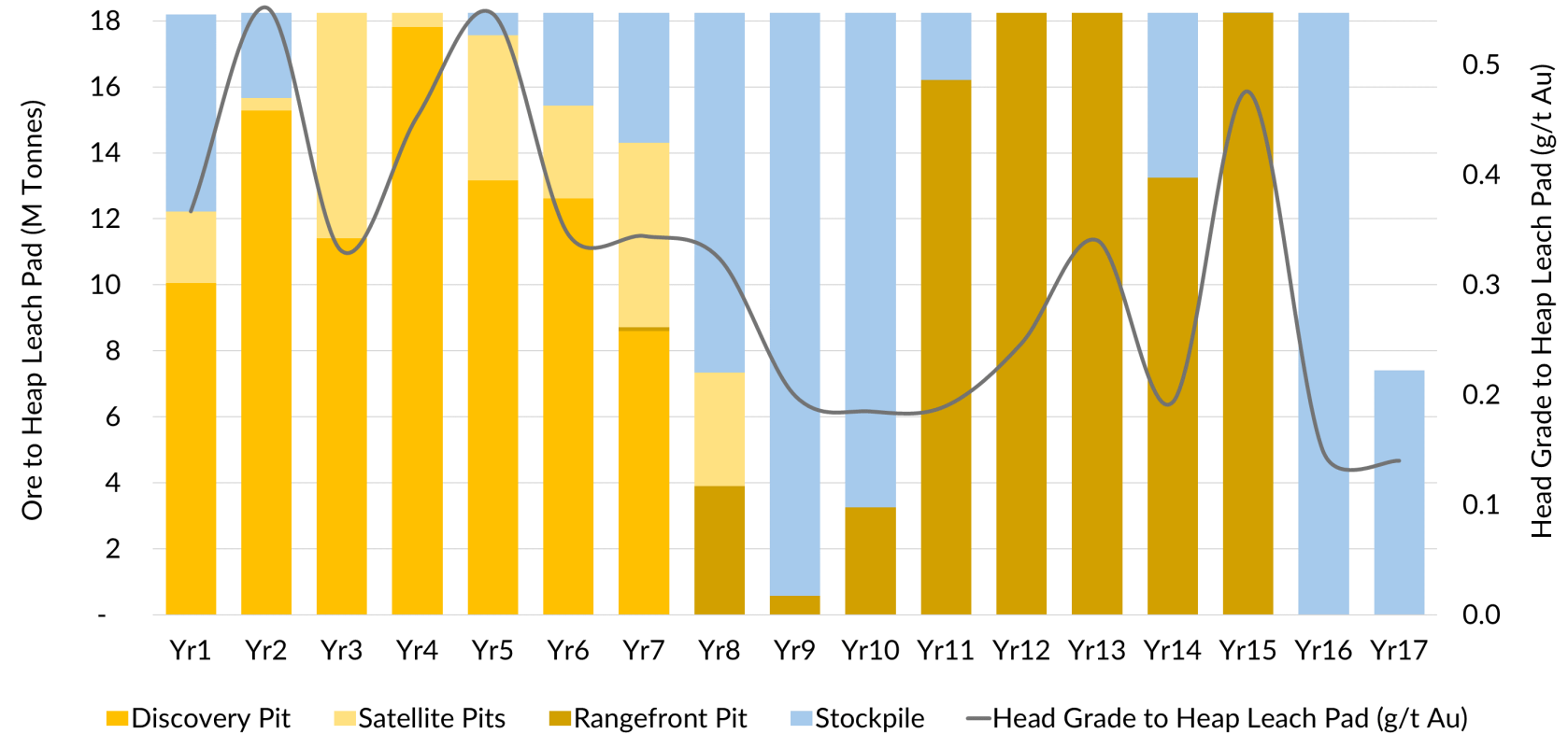
# Black Pine Appendix



# Black Pine Gold Project PFS – Mine Production Schedule

## Production Strategy

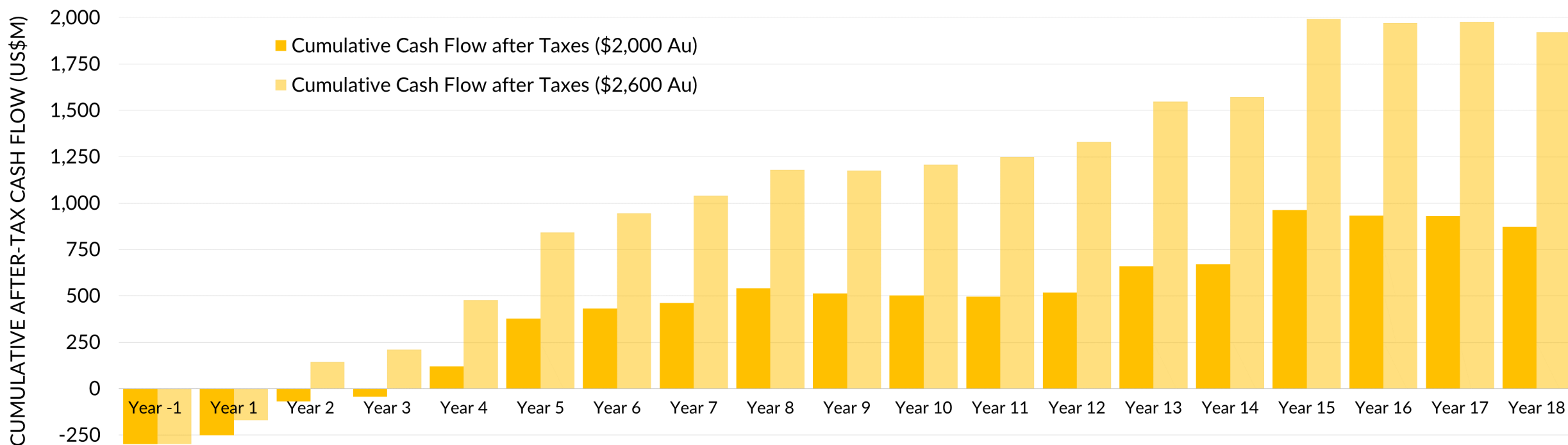
- Mine plan delivers higher head grade and production in early years, which drives higher IRR and rapid payback
- Stockpiles maintain leach pad feed during Rangefront pit development
- Opportunities identified to maintain higher head grades across Discovery to Rangefront pit transition



# Black Pine Gold Project PFS After-Tax Cash Flow Profiles

**Strong Cash Flow Generation**

Gold Price	\$2,000/oz	\$2,600/oz
After-Tax Cash Flow	\$871 million	\$1,919 million
After-Tax Payback	3.3 years	1.5 years

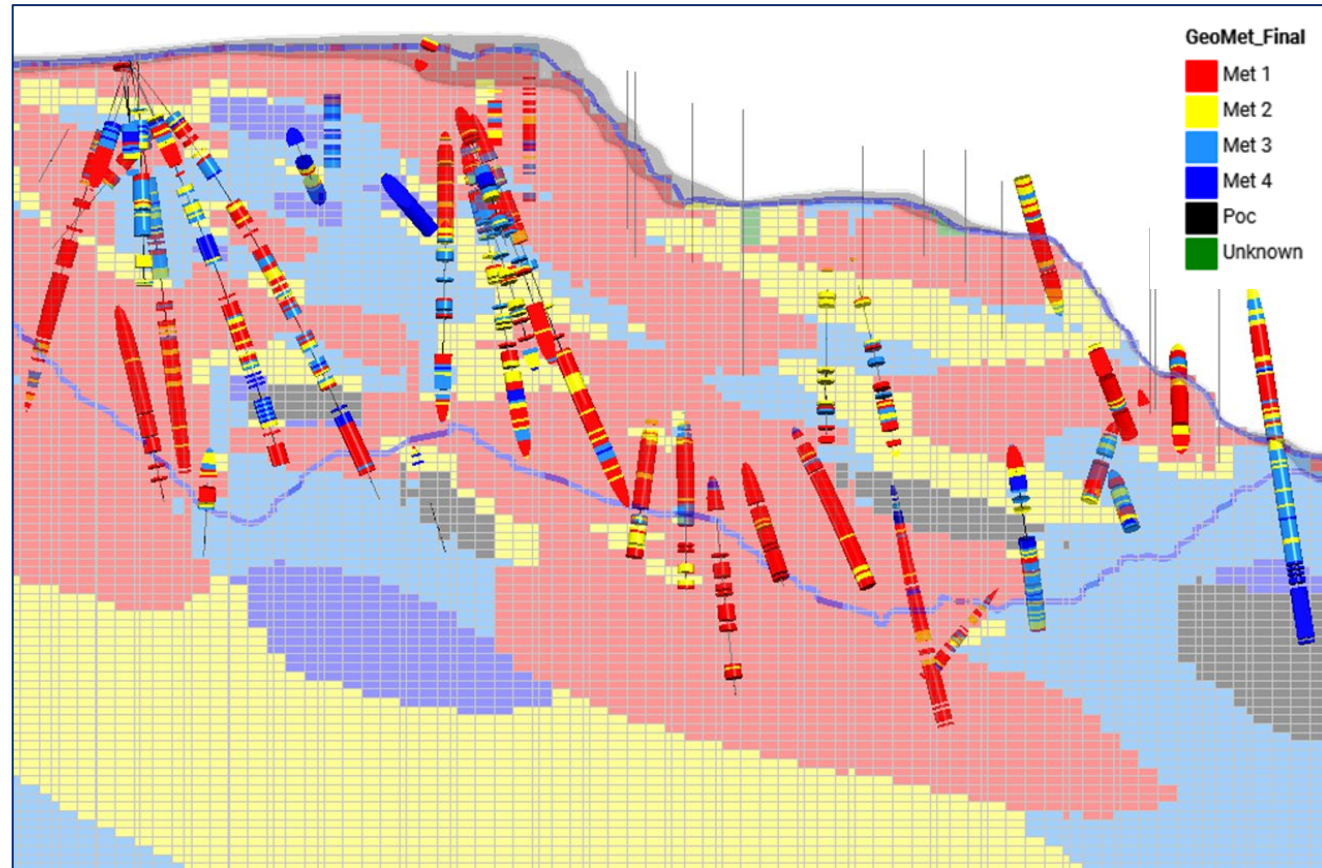


# Black Pine Gold Project PFS – Metallurgy

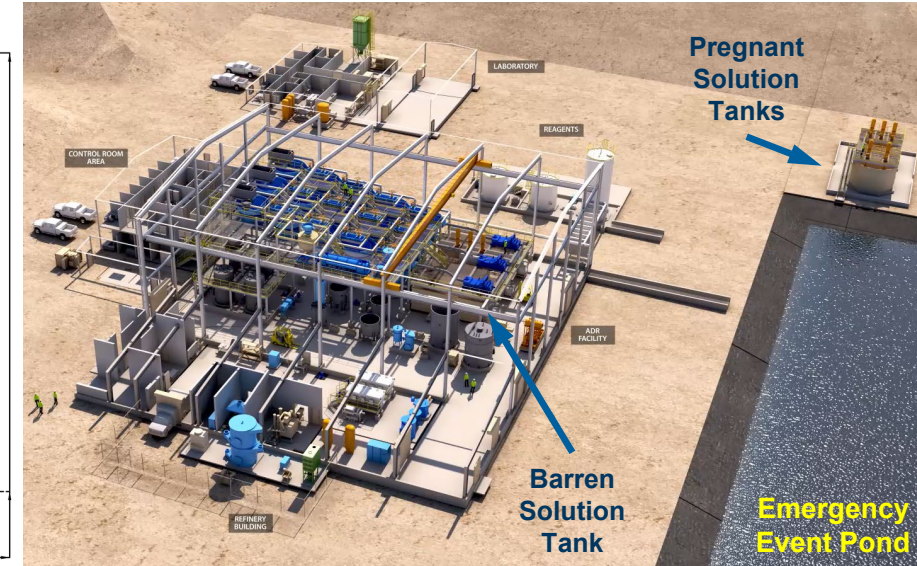
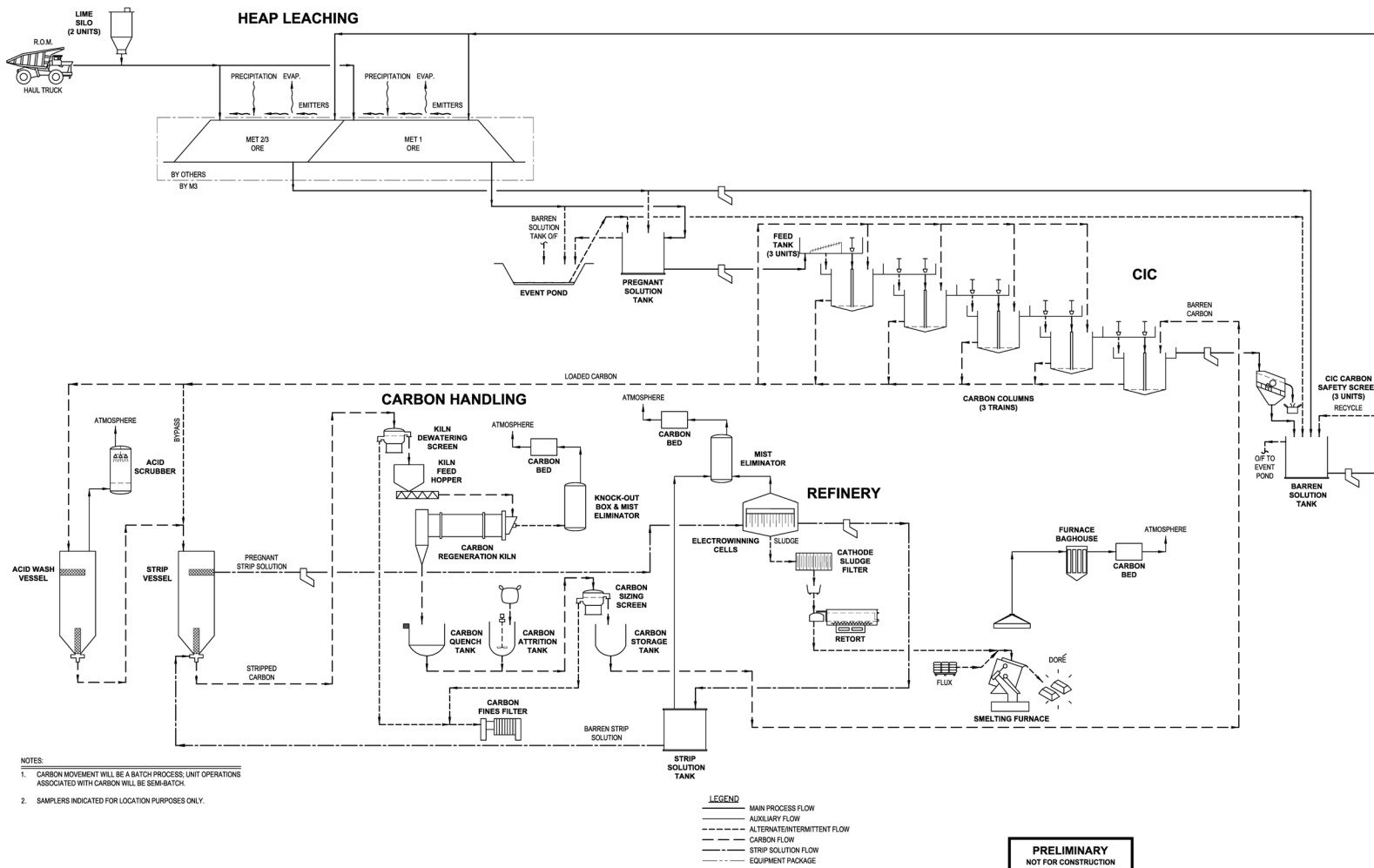
## Advanced Metallurgical Model at PFS

- 6 phases of test work completed on bulk samples and large-diameter drill core composites (174 column tests completed)
- Rapid gold extraction with >80% of leachable gold extracted within 10 days is characteristic of the deposit
- Gold recovery is largely insensitive to crush size across all major ore types
- Oxide geo-metallurgical domains modelled in 3D, based on gold cyanide solubility
- Specific gold grade-recovery equations by domain, location, lithology & grade
- Results support selection of ROM heap leaching with blended feed

## Cross-section through Geo-metallurgical Domain Block Model



# Black Pine Gold Project PFS – Flowsheet



## Key Design Characteristics

- Conventional Run-of-Mine (ROM) heap leach facility
  - No crushing, screening or agglomeration
  - Mine Truck dump at 50 ktpd
- Staged pad construction
- Conventional ADR plant
- Gold doré produced on site



# Black Pine Gold Project PFS – Moving towards Feasibility

<b>Permitting</b>	<ul style="list-style-type: none"><li>• <b>Submit Mine Plan of Operations to US Forest Service</b></li><li>• Continue baseline environmental &amp; cultural studies</li><li>• Engage NEPA Contractor</li><li>• Stakeholder engagement</li><li>• Notice of Intent anticipated H2 2025</li></ul>
<b>Resource Growth</b>	<ul style="list-style-type: none"><li>• Upgrade inferred resource (e.g. 90koz at 0.9 g/t Inferred)</li><li>• Infill indicated excluded from mine plan</li><li>• Step out from known pits (e.g. Rangefront W)</li><li>• Exploration in high priority target areas (e.g. Burnt Basin)</li><li>• <b>Evaluate Reclaimed Heap</b></li><li>• Feasibility resource model</li></ul>
<b>Feasibility Works</b>	<ul style="list-style-type: none"><li>• Hydrological studies on the bed rock aquifers</li><li>• Geotechnical engineering – slopes &amp; site civils</li><li>• Finalize metallurgical testwork &amp; update geometallurgical models</li></ul>
<b>Operations Trade-Offs</b>	<ul style="list-style-type: none"><li>• Bulk materials handling for ore transport &amp; stacking</li><li>• <b>Solar power options for additional power requirements</b></li><li>• <b>Electrification of mine fleet / Autonomous trucks/drills</b></li><li>• Haulroad, back fill &amp; rock storage facility optimization</li><li>• Stockpile strategy optimization</li><li>• Heap design &amp; phasing</li></ul>

# Black Pine Gold Project PFS – Benchmarking to Peers

## Benchmarking to Comparable Western US Heap Leach Gold Mines & Projects

- Black Pine shows favourable strip ratio, royalty burden, capital and operating cost intensity compared to other long-life, Great Basin, oxide gold heap-leach mines

Benchmarking	Black Pine	Marigold	Florida Canyon	Beartrack	Delamar
	Liberty Gold	SSR Mining	Integra Resources	Revival Gold	Integra Resources
Processing Method	ROM	ROM	Crush/ROM	Crush	Crush Leach/Mill
Production koz Au/yr	183k (Y1-5 Avg)	212k (LOM Avg)	70k (LOM Avg)	65k (LOM Avg)	163k <sup>(1)</sup> (Y1-8 Avg)
Contained Au moz	3.11	2.63	0.82	0.86	2.96 <sup>(1)</sup>
Payable Au moz	2.19	2.2	0.5	0.53	1.79 <sup>(1)</sup>
Contained Grade (Au g/t)	0.32	0.47	0.35	0.74	0.74 <sup>(1)</sup>
Recovery (%)	70%	74%	59%	62%	60% <sup>(1)</sup>
Strip Ratio (Waste/Ore)	1.3	4.5	0.9	2.4	2.2
Royalty %	0.25%	7.0%	5.5%	1.8%	1.5%
AISC/oz. Au	\$1,381	\$1,213	\$1,525	\$1,235	\$955 <sup>(1)</sup>
Operating Cost US\$/tonne ore	\$9.11	\$11.58	\$9.95	\$14.06	\$12.93

Sourced from company Technical Reports and filings: Liberty Gold, November 2024; SSR Mining, February 2024; Revival Gold, June 2023; Argonaut Gold, May 2024; Integra Resources, October 2023.

<sup>(1)</sup> Gold equivalent ounces

# Black Pine Gold Project PFS – Mineral Reserve & Resource

## First Mineral Reserve Estimate

Mineral Reserve Estimate of **3.1 million ounces Probable** using a cut-off grade of 0.1 g/t Au and a gold price of US\$ 1,650/oz

## Updated Mineral Resource Estimate

Mineral Resource Estimate increased to **4.1 million ounces Indicated** and **0.7 million ounces Inferred**

Key changes relative to the previous Mineral Resource estimate (see press release dated [February 15, 2024](#)) are:

- Updated metallurgical recovery model for gold
- Change in resource cut-off grade from 0.2 g/t Au to 0.1 g/t Au
- Increase in constraining pit shell gold price from US\$ 1,800/oz to US\$ 2,000/oz

## Mineral Resource Estimate Conversion Potential

Indicated and Inferred gold ounces not included in the Probable Reserve are being targeted in the current and future drill programs for potential conversion.

Reserve Class <sup>(1)</sup>	M tonnes	g/t Au	(000) oz Au
Probable	299.4	0.32	3,110
<b>Total</b>	<b>299.4</b>	<b>0.32</b>	<b>3,110</b>

<sup>(1)</sup> Mineral Reserves are converted from Mineral Resources through the process of pit optimization, pit design, production scheduling, stockpiling and cut-off grade optimization. Mineral Reserves are reported to a cut-off grade of 0.10 g/t gold and are based on a gold price of US\$1,650/oz. See press release dated October 10, 2024, and [Endnotes](#) slide in this presentation.

Resource Class <sup>(2)</sup>	M tonnes	g/t Au	(000) oz Au
Indicated	402.6	0.32	4,163
Inferred	97.7	0.23	712

<sup>(2)</sup> Mineral Resources are reported within conceptual open pits estimated at a gold cut-off grade of 0.10 g/t, using the PFS pit slope parameters, a long-term gold price of US\$2,000 per ounce and the PFS variable gold leach recovery model derived from extensive metallurgical studies. See press release dated October 10, 2024, and [Endnotes](#) slide in this presentation.

Resource Grade Distribution Within 0.1 g/t Au Pit (\$2000)				
Block cut-off grade (g/t Au)	Classification <sup>(3)</sup>	M tonnes	g/t Au	(000) oz Au
<b>0.10 g/t</b>	<b>Indicated</b>	<b>402.6</b>	<b>0.32</b>	<b>4,163</b>
	<b>Inferred</b>	<b>97.7</b>	<b>0.23</b>	<b>712</b>
0.17 g/t	Indicated	259.0	0.42	3,535
	Inferred	47.0	0.33	500
0.20 g/t	Indicated	209.3	0.48	3,240
	Inferred	35.6	0.38	433
0.50 g/t	Indicated	54.3	1.00	1,750
	Inferred	5.7	0.85	155

<sup>(3)</sup> Please refer to notes accompanying the table above. The reporting Mineral Resource estimate is shown in bold font. Tonnes, grade and ounces are expressed within a series of nested pit shells generated at USD\$2,000/ounce gold whereby only the material above each cut-off grade is processed.

# Endnotes

## Black Pine Mineral Reserve Estimate

### Notes:

- The Mineral Reserve estimate was prepared by AGP Mining Consultants Inc., Toronto, Canada (“AGP”) and has an effective date of June 1, 2024. The Qualified Person responsible as defined under NI 43-101 for the Mineral Reserve estimate is Todd Carstensen RM-SME, Principal Mine Engineer and independent of Liberty Gold.
- Mineral Reserves reported are consistent with the CIM Definition Standards for Mineral Resources and Mineral Reserves (2014).
- Mineral Reserves are converted from Mineral Resources through the process of pit optimization, pit design, production scheduling, stockpiling and cut-off grade optimization.
- Mineral Reserves are reported to a cut-off grade of 0.10 g/t gold and are based on a gold price of US\$1,650/oz.
- Metallurgical recovery of gold is based on a variable gold leach recovery model derived from extensive metallurgical studies. All mineralized carbonaceous materials have been treated as waste.
- Mine dilution was estimated based on a 1.0 m skin applied to ore to waste contacts.
- Units are metric tonnes, metric grams & troy ounces; “Au” = gold.
- The estimate of mineral reserves may be materially affected by geology, environment, permitting, legal, title, taxation, sociopolitical, marketing, or other relevant issues.

## Black Pine Mineral Resource Estimate

### Notes:

- The Mineral Resource estimate was prepared by SLR Consulting (Canada) Ltd., Toronto, Canada (“SLR”) and has an effective date of June 1, 2024. The Qualified Person responsible as defined under NI 43-101 for the Mineral Resource is Valerie Wilson, M.Sc., P.Geo., Principal Resource Geologist, a fulltime employee of SLR and independent of Liberty Gold.
- Mineral Resources reported are consistent with the CIM Definition Standards for Mineral Resources and Mineral Reserves (2014).
- Mineral Resources are reported within conceptual open pits estimated at a gold cut-off grade of 0.10 g/t, using the PFS pit slope parameters, a long-term gold price of US\$2,000 per ounce and the PFS variable gold leach recovery model derived from extensive metallurgical studies. All carbonaceous material and gold mineralized material falling outside the conceptual open pits is considered waste rock and is excluded from resource classification.
- Bulk density is variable by rock type.
- Mineral Resources are not Mineral Reserves and do not have demonstrated economic viability.
- Mineral Resources are reported inclusive of Mineral Reserves.
- Rounding as required by reporting guidelines may result in apparent discrepancies between tonnes, grades, and contained gold content.
- Units are metric tonnes, metric grams & troy ounces; “Au” = gold.
- The estimate of Mineral Resources may be materially affected by geology, environment, permitting, legal, title, taxation, sociopolitical, marketing, or other relevant issues.
- Totals may not match due to rounding.

# Libertygold

TSX:LGD | OTCQX:LGDTF

## Corporate Inquiries

604.632.4677

[info@libertygold.ca](mailto:info@libertygold.ca)

610- 815 West Hastings Street  
Vancouver, BC V6C 1B4

[www.libertygold.ca](http://www.libertygold.ca)