



DRYDEN

GOLD CORP

TSXV: DRY | OTCQB: DRYGF
WWW.DRYDENGOLD.COM

DECEMBER 2024

Acknowledgements & Forward-Looking Statements

Dryden Gold Corp acknowledges all Indigenous Peoples and that it is operating on the traditional homelands of the Wabigoon Lake Ojibway Nation and Eagle Lake First Nation.

Certain statements contained herein constitute “forward-looking statements” within the meaning of the applicable Canadian securities legislation. These forward-looking statements are based on current expectations, estimates and projections about the Canadian mining and mineral exploration industry based on management’s beliefs and certain assumptions made by management. Readers are cautioned that such forward-looking statements are not guarantees of future performance and are subject to risks, uncertainties and assumptions that are difficult to predict and the actual results and performance of Dryden Gold Corp. (the “Company”) may differ materially from the results implied by such statements. Readers are cautioned not to place undue reliance on any forward-looking statements. Unless otherwise required by law, the Company also disclaims any obligation to update its view of any such risks or uncertainties or to announce publicly the result of any revisions to the forward-looking statements made here.

This document contains proprietary information that is the property of Dryden Gold Corp. Neither this document, nor the proprietary information contained herein, shall be published, reproduced, copied, disclosed or used for any other purpose, other than the review and consideration of this document.

This presentation is not an offer, nor the solicitation of an offer to buy any securities. Such an offer, if made, will be made only through a prospectus or other such document issued in accordance with applicable securities laws, and other applicable laws, rules and regulations., Or pursuant to the applicable exemption from the requirement to deliver a prospectus, in accordance with applicable laws.

Historical statements contained in this document regarding past activities should not be taken as a representation that such trends or activities will continue in the future. In particular, historical results should not be taken as a representation that such trends will be replicated in the future. No statement in this document is intended to be nor may be construed as a profit forecast.

An investment in the Company is speculative and involves substantial risk and is only suitable for investors that understand the potential consequences and are able to bear the risk of losing their entire investment. Investors should consult with their own legal, tax and financial advisors with respect to all such risks before making an investment.

The Company is in the early stage of development and has a limited operational history, making it difficult to accurately predict business operations. The Company has limited resources and may run out of capital prior to becoming profitable. The Company may fail and investors may lose their entire investment.

The technical disclosure in this presentation has been approved by Maura J. Kolb, M.Sc., P.Geo. a Qualified Person as defined by National Instrument 43-101 of the Canadian Securities Administrators.

DRYDEN

GOLD CORP



Key Value Drivers



Experienced Management

History of success in navigating M&A
 Technical team has extensive regional experience

Trey Wasser



CEO
 Director

Maura Kolb



President

Scott Kelly



CFO
 Director

Anna Hicken



VPX

Jason Jessup



Director

Christina McCarthy



Director

Darin Wagner



Advisor

Stephen Kenwood



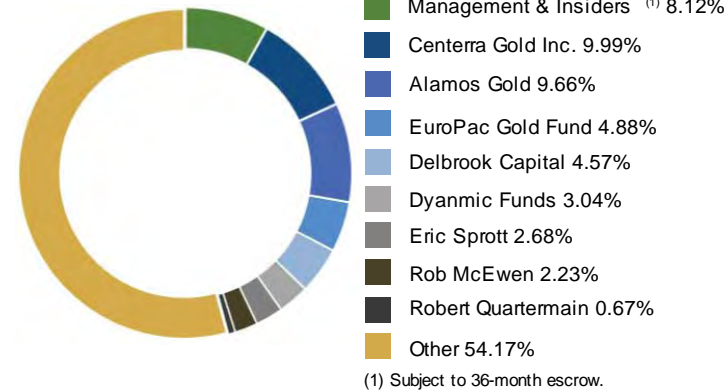
Advisor



Investment Upside

High-grade gold across the entire Dryden District
 Limited drilling – 30,000 meters
 System has never been drilled tested at depth
 Regional Greenfield targets at Hyndman & Sherridon
 Strategic investment from Centerra Gold

MAJOR SHAREHOLDERS



SHARE STRUCTURE

| Trading Symbols As at October 18, 2024 | TSXV: DRY OTCQB: DRYGF |
|---|---------------------------|
| Current Issued and Outstanding | 149,458,030 |
| Warrants Outstanding | 56,174,986 |
| ESOP Options Outstanding | 5,900,000 |
| Fully Diluted | <u>211,533,016</u> |
| Cash Balance | 7,440,000 |



Favourable Mining Jurisdiction

Excellent infrastructure, including grid power
 Major highway access and logging roads
 Year-round drilling
 Significant tax benefits and government grants
 Collaborative relationships with First Nations communities

NEWSLETTER WRITER COVERAGE

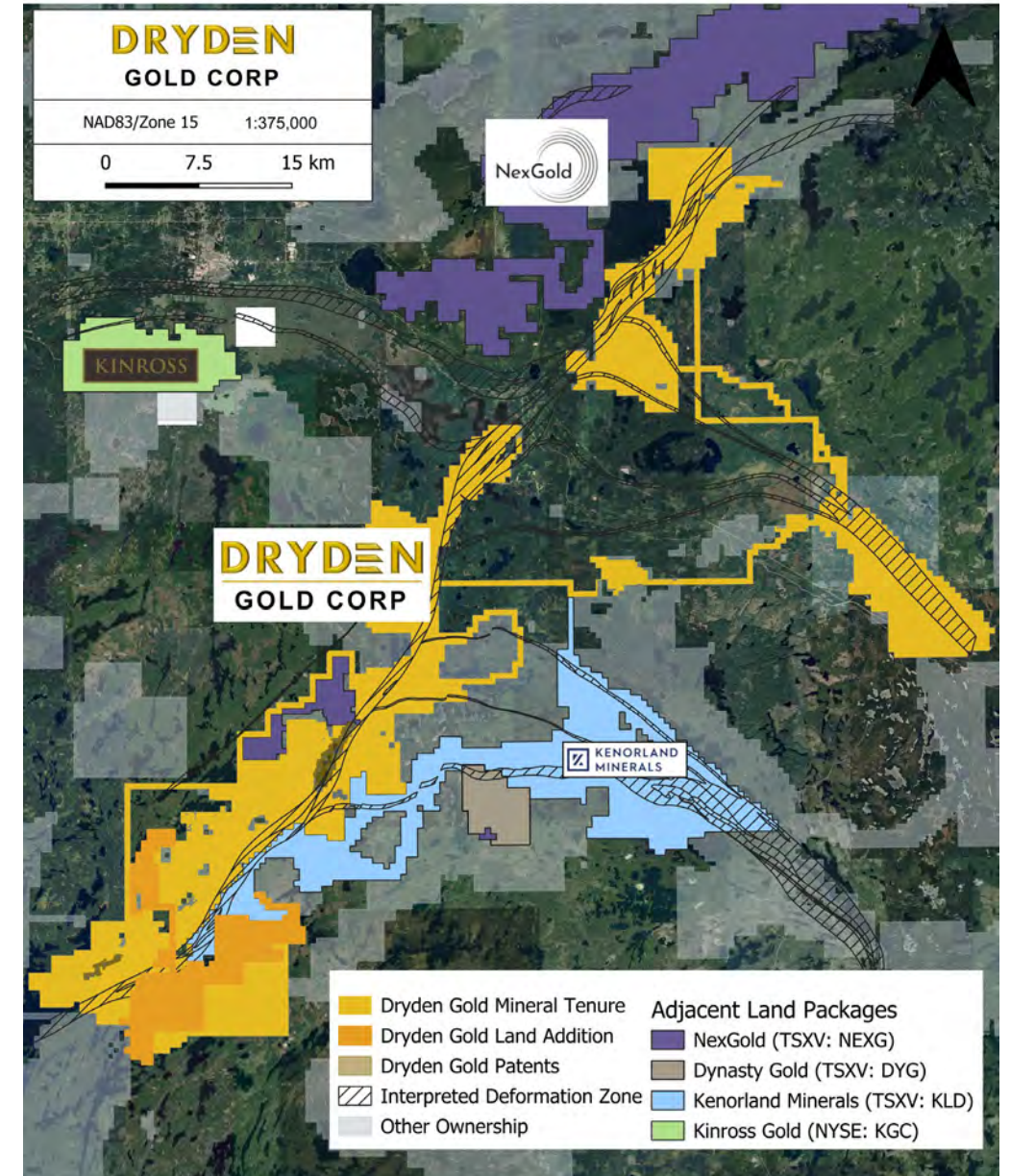
Chen Lin | chenpicks.com

DRYDEN

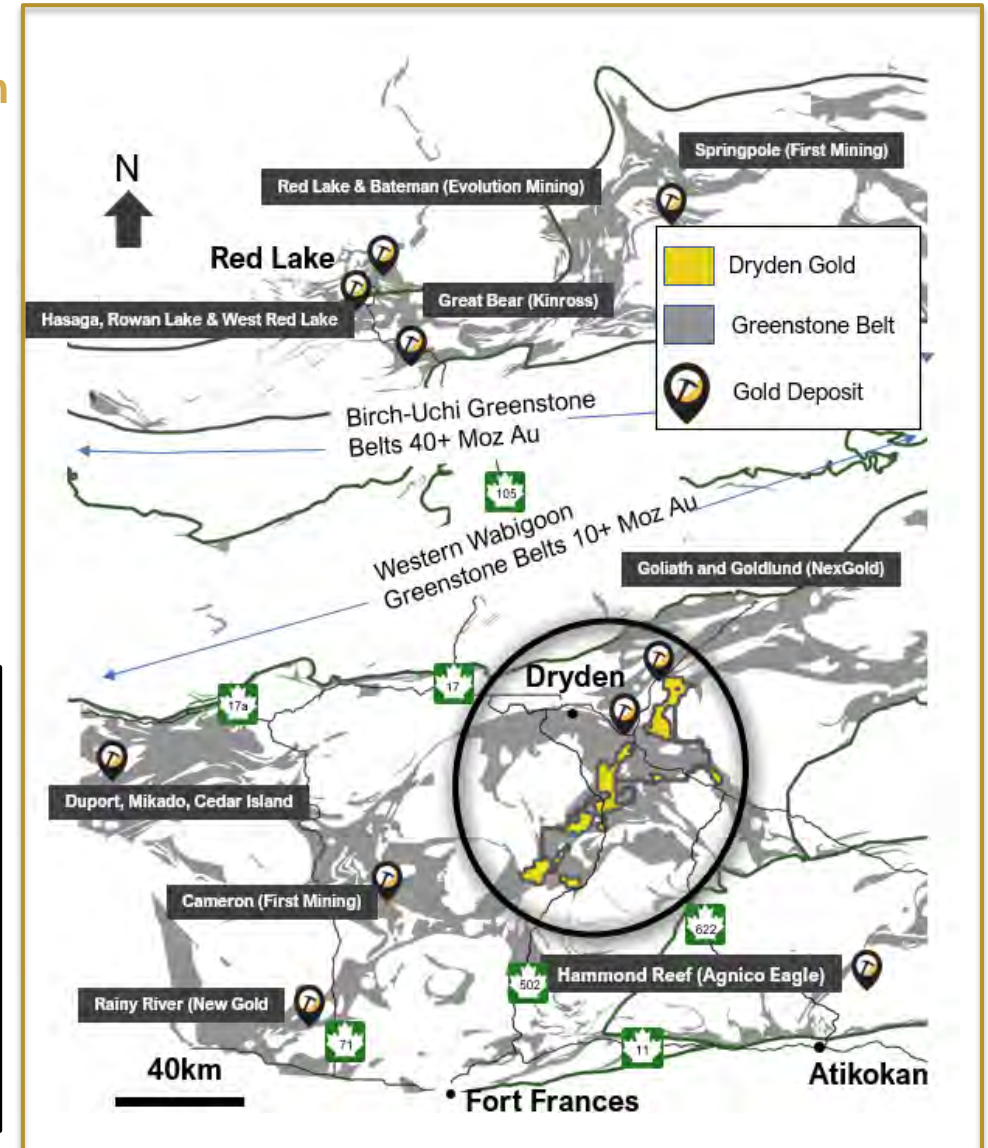
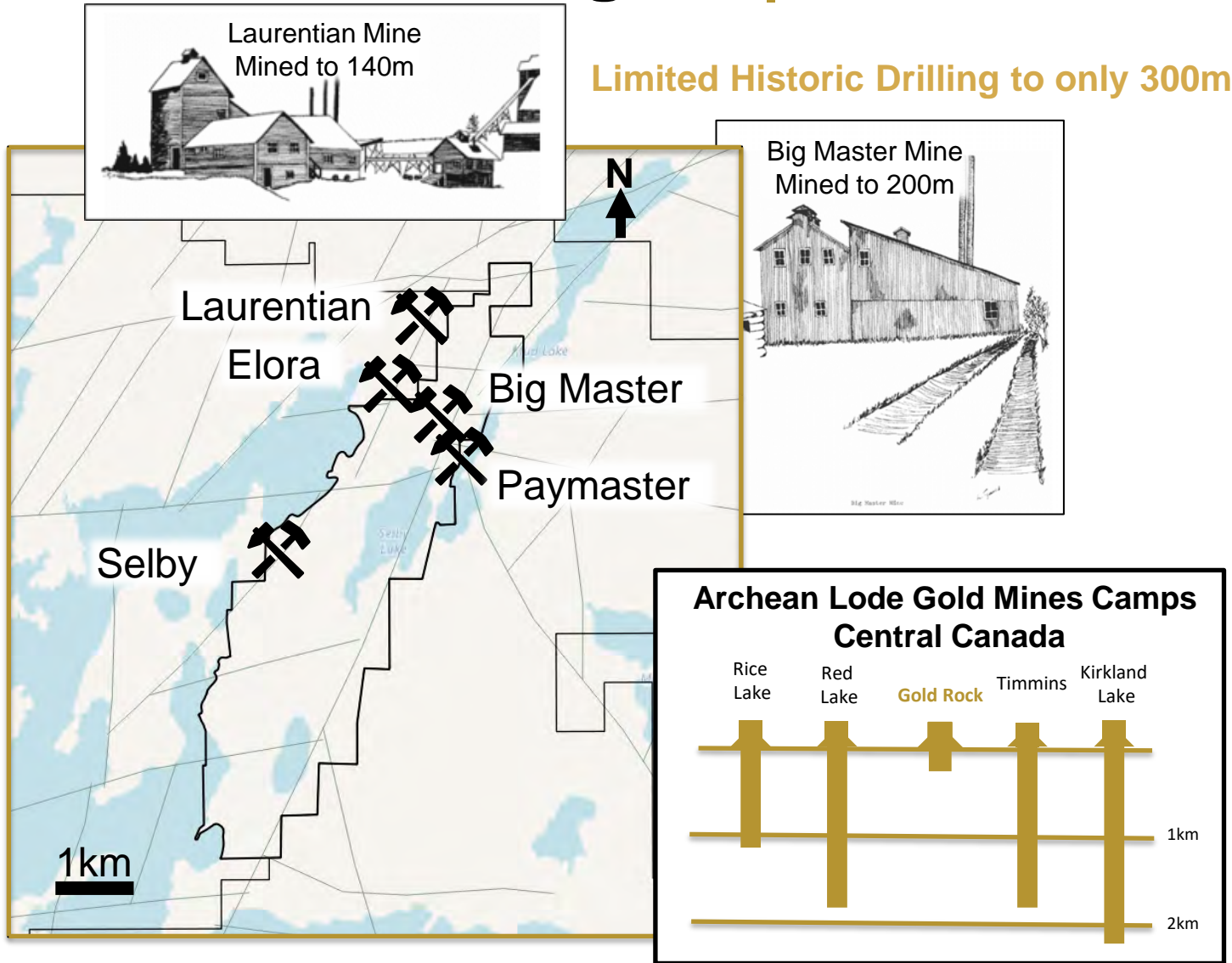
GOLD CORP

Strategic Land Package

- ▲ Over 702 km² (70,250 hectares) consolidated by Dryden Gold Corp.
- ▲ Excellent infrastructure – Roads (Trans-Canada Hwy), power & labour
- ▲ 50 km covering regional gold bearing MDdz structure (Manitou-Dinorwic deformation zone)
- ▲ **Kinross, NexGold Mining (Treasury Metals), Kenorland Minerals and Dynasty Gold** active in the Dryden Gold District
- ▲ **NexGold Mining** has defined a **3M ounce** low-grade resource in the Dryden Gold District
- ▲ Limited exploration - only **33,200 meters** of **historic** drilling district-wide at shallow depths
- ▲ **Brownfield** opportunity in the **Gold Rock Camp**
- ▲ **District Scale Targets** – Significant opportunities at Sherridon and Hyndman properties. Fieldwork and re-logging are ongoing.



Prolific Gold Region | Under Explored in the Dryden Gold District



District Scale | Near Surface High-Grade Gold Across the Property

2024 EXPLORATION FOCUS AT THE GOLD ROCK CAMP:

Elora Gold System - Drill Highlights

- ▲ 14.10 g/t gold over 7.54 meters
- ▲ 10.59 g/t gold over 6.10 meters
- ▲ 7.47 g/t gold over 12.20 meters

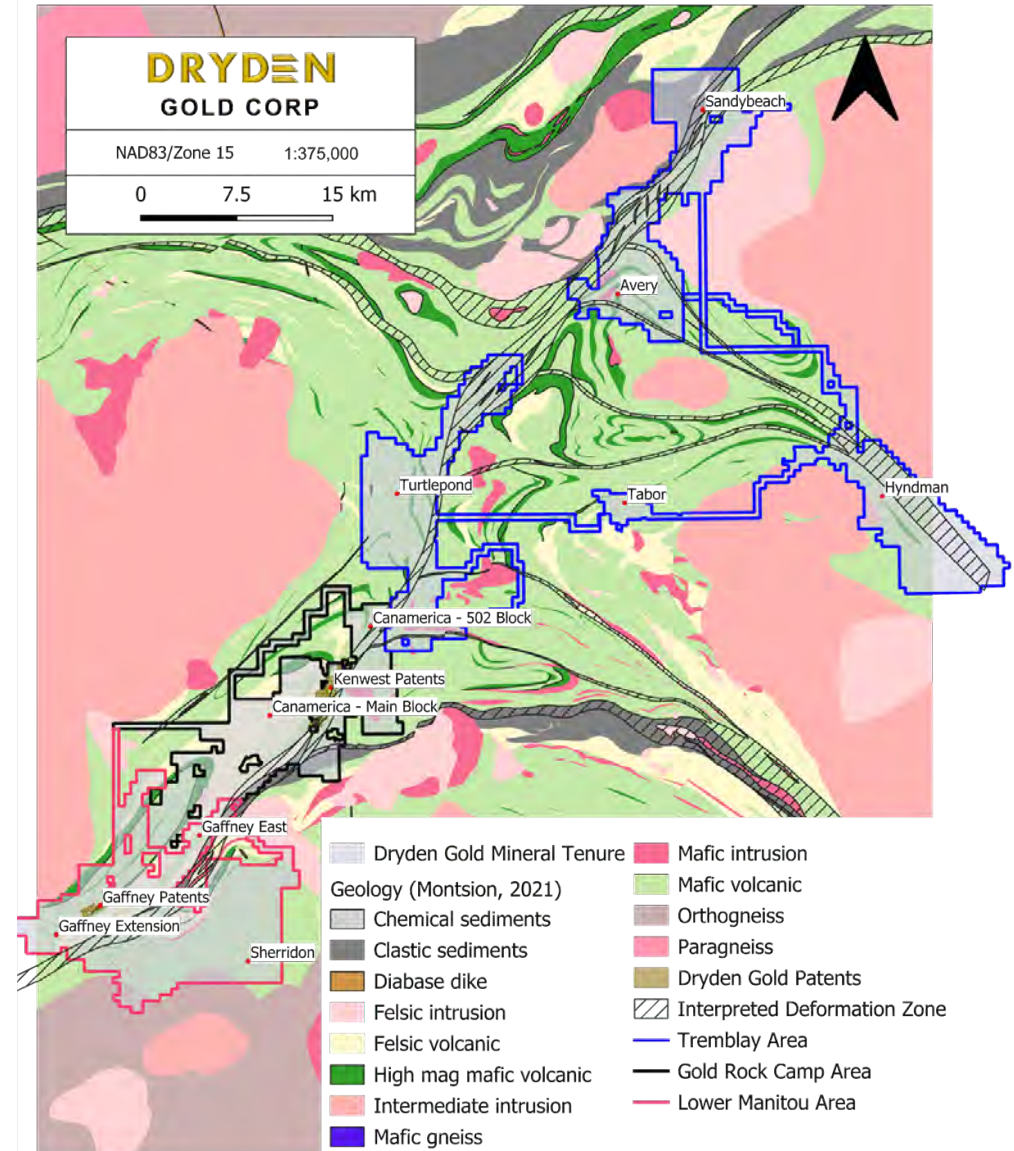
Big Master Gold System - Drill Highlights

- ▲ 3,497.0 g/t gold over 8.5 meters including 53,700 g/t gold over 0.55 meters
- ▲ 15.4 g/t gold over 6.1 meters
- ▲ 26.11 g/t gold over 3.16 meters, including 79.80 g/t gold over 0.33 meters



District Wide Drill Intercept Highlights:

- | | |
|---|---|
| ▲ Gaffney – 2.4 g/t gold over 75.1 meters | ▲ Turtlepond - 15.0 g/t gold grab sample |
| ▲ Gaffney – 5.0 g/t gold over 8.8 meters | ▲ Hyndman - 13.0 g/t gold grab sample |
| ▲ Sherridon – 46.0 g/t gold over 0.5 meters | ▲ Avery - 24.56 g/t gold over 2.25 meters |
| | ▲ Tabor - 39 g/t gold grab sample |



Striking Similarities to Red Lake Mine

- ▲ Similar geological setting, rock types and dykes with regional folding.
Confirmed - through mapping, geophysics and drilling.
- ▲ Near surface high-grade free gold in an Archean setting.
Confirmed - added new high-grade shoots with shallow drilling.
- ▲ Structural geometry – gold bearing shear corridor with secondary mineralized splay structures & dykes. *High-grade gold along 50km deformation zone and confirmation that high-grade shoots are related to secondary structures & dykes.*
- ▲ Favorable geological gold traps for high-grade shoots. *Confirmed - drilling known structural intersections, shear zones and folds intersected 3 new high-grade shoots.*
- ▲ Robust gold system with 3 known types of mineralization.

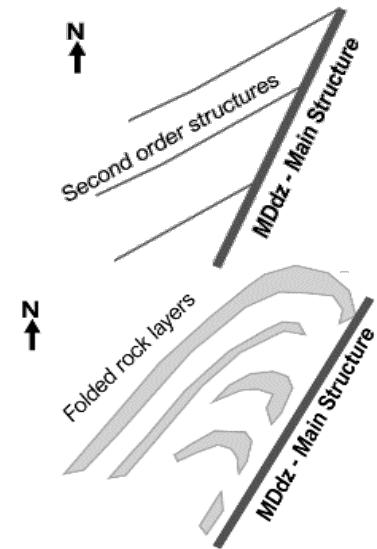
Red Lake Mine:

- (1) Veins in sheared quartz & altered volcanics,
- (2) Mineralized hanging wall & footwall in altered volcanics &
- (3) Disseminated sulphide ore

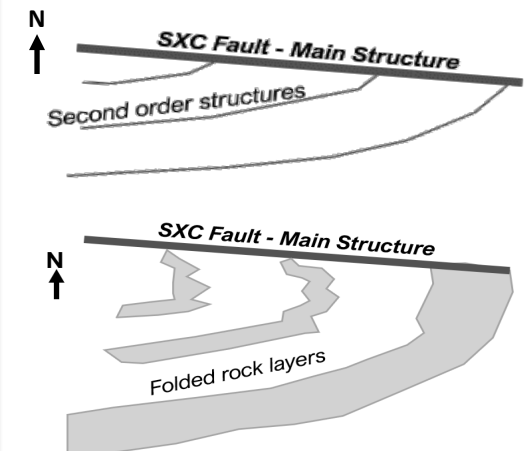
Dryden- Gold Rock Camp;

- (1) Veins with halo in sheared quartz & altered volcanics,
- (2) Mineralized hanging wall & footwall in altered volcanics &
- (3) Disseminated sulphide ore

Dryden Gold Corp. Gold Rock Area Geology



Red Lake Mine Geology

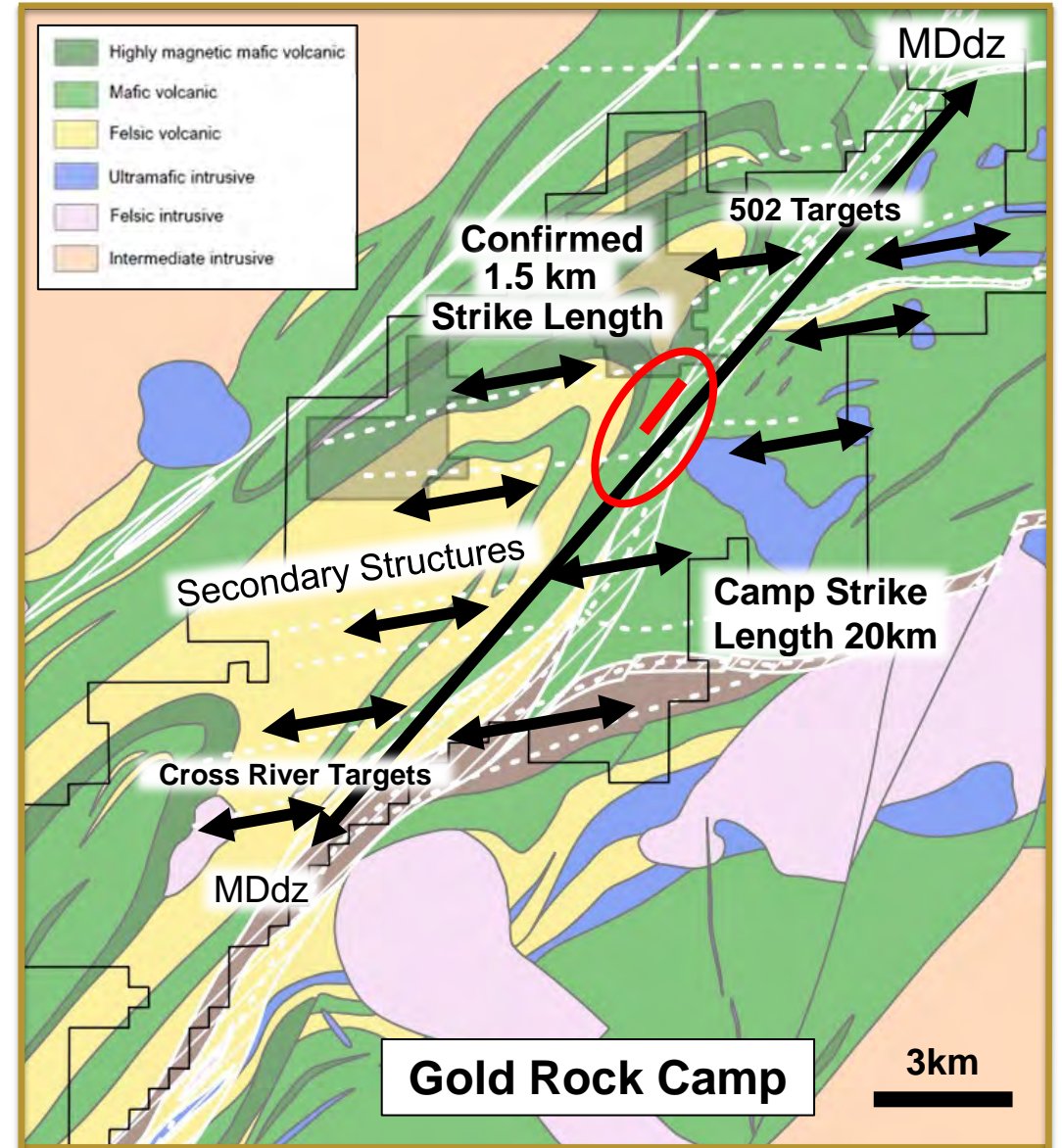


DRYDEN

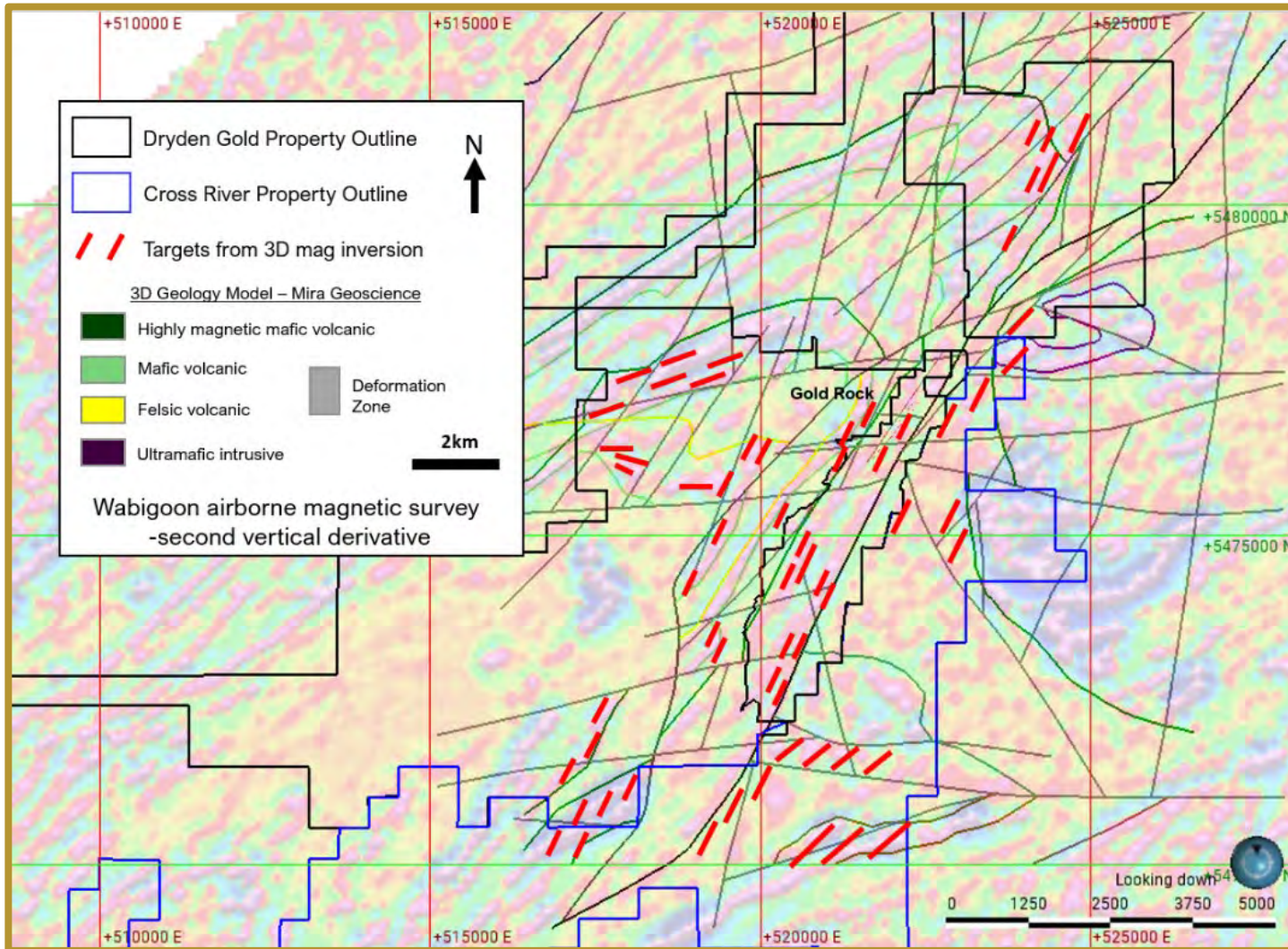
GOLD CORP

Gold Rock Camp | Near Surface High-Grade Gold

- ▲ **Brownfield opportunity** within the **Gold Rock Camp**
 - ▲ Majority of historic drilling focused on **Gold Rock Camp**
 - ▲ Historic high-grade intercepts on two gold systems
 - ▲ 75% of all historic mining occurred in **Gold Rock Camp**
- ▲ Potential for **large gold system** footprint
 - ▲ 20 km strike on MDdz structure in **Gold Rock Camp**
 - ▲ 1.5 km gold system strike **confirmed** with new drilling
- ▲ **Repeating** intersecting East-West Splay structures
 - ▲ Fault intersections are great traps for **high-grade gold** mineralization
 - ▲ Fault intersections correspond to historic gold mines and known gold occurrences throughout the **Gold Rock Camp**
- ▲ Regional folding **similar to Red Lake Mine**
 - ▲ Fold hinges are great traps for **high-grade gold**
- ▲ **Nuggety free-gold** with excellent metallurgy



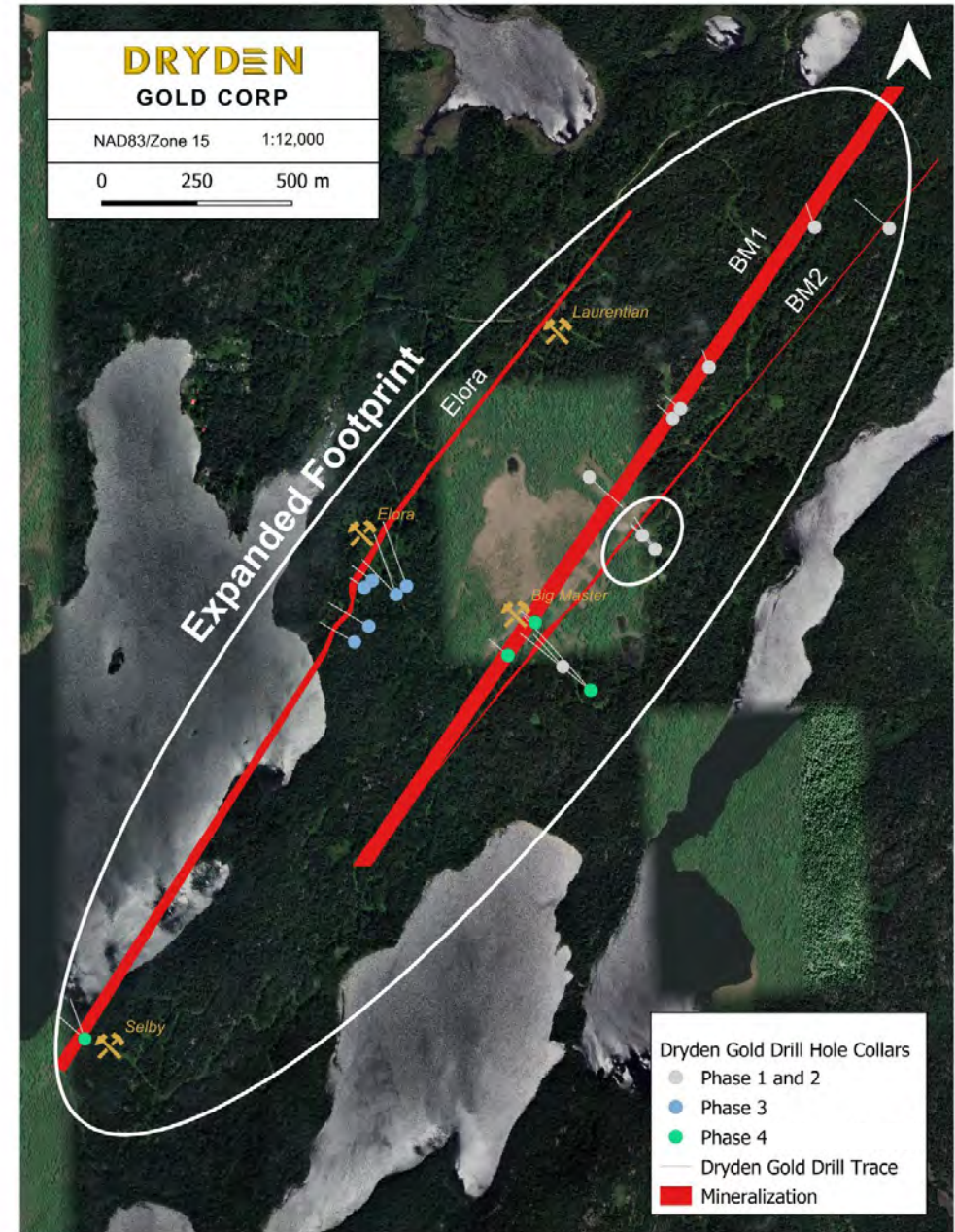
Gold Rock Camp | Geophysical Targets



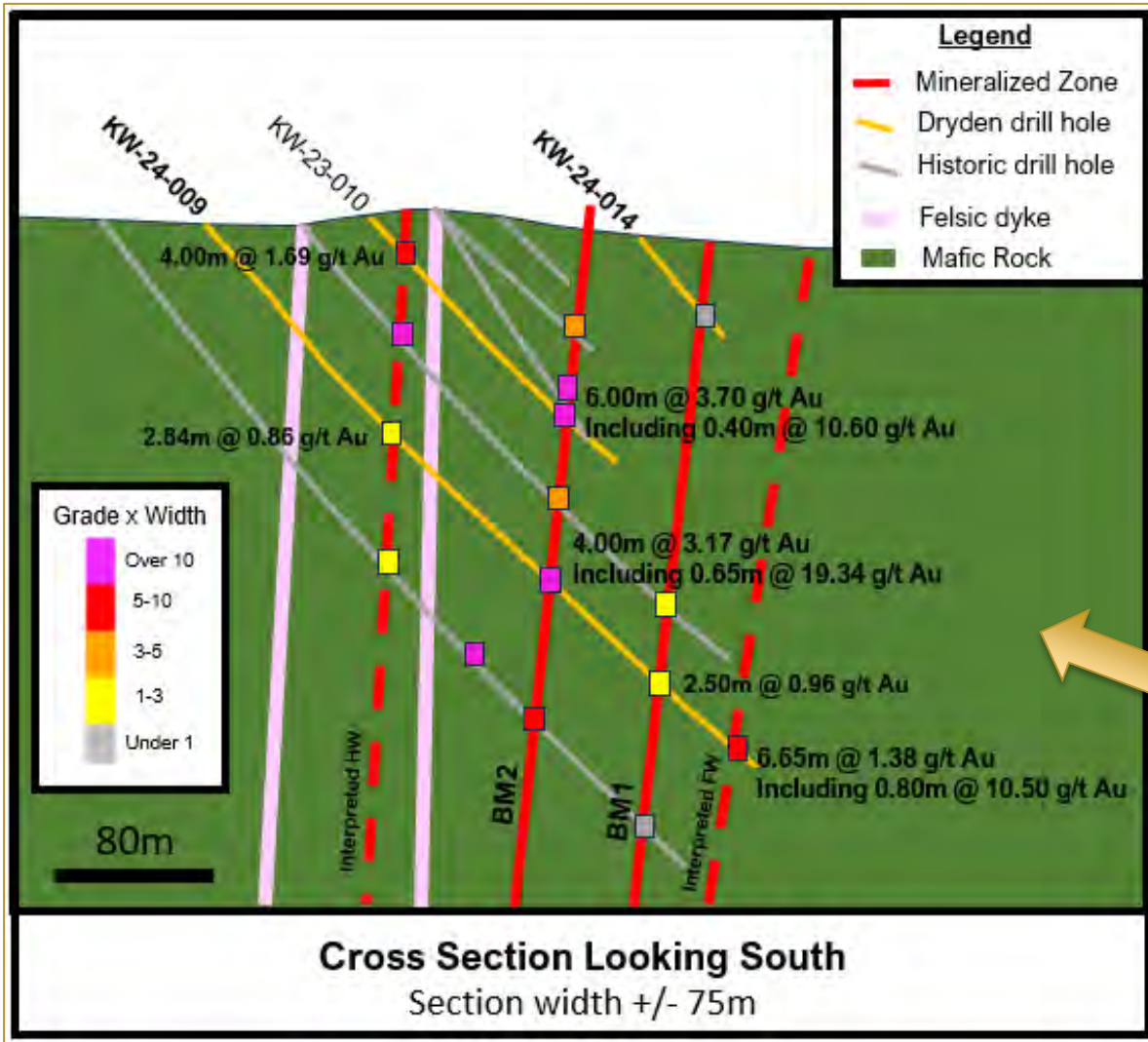
- ▲ 3-D Mag Inversion
- ▲ Creates targets from unexplained anomalies
- ▲ Targets cover known gold mineralization
- ▲ Targets align with cross structures and regional folding

Highlights | Spring 2024 Drilling

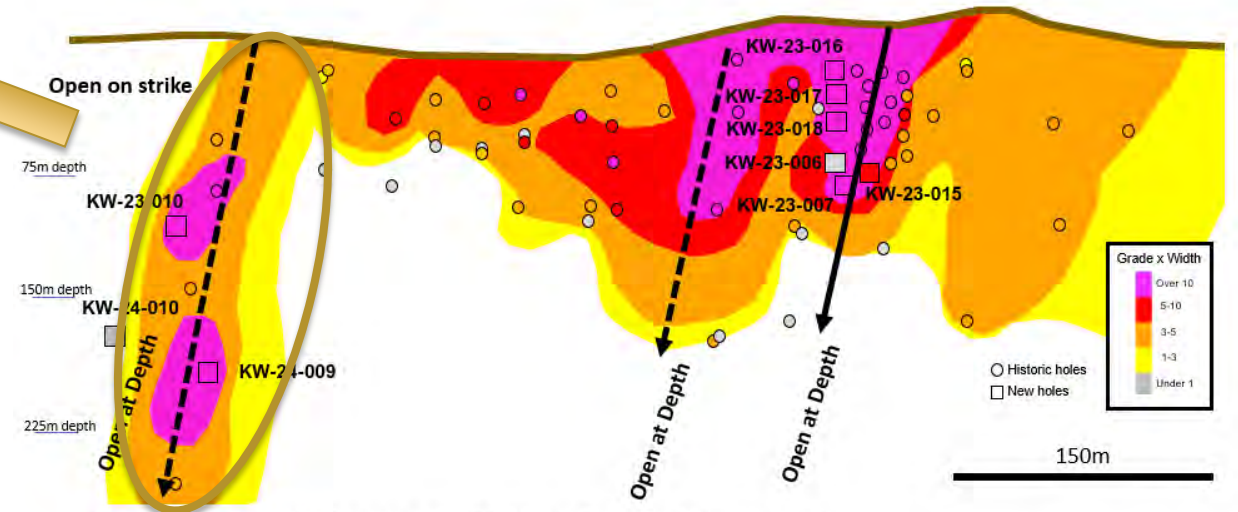
- 1 Expanded mineralized **footprint** of gold system
- 2 Confirmed orientation, structural controls and **expanded Elora high-grade zone** and **BM2 historically delineated high-grade shoot**
 - ▲ **KW-24-008: 14.10 g/t gold over 7.54 meters, including 43.81 g/t gold over 1.42 meters and 92.10 g/t gold over 0.30 meters**
 - ▲ **KW-24-003: 53.51 g/t gold over 1.05 meters, including 181.00 g/t gold over 0.30 meters**
 - ▲ **KW-23-018: 6.66 g/t gold over 4.30 meters including 44.80 g/t gold over 0.27 meters**
- 3 Discovered **Three New high-grade shoots** mineralized footprint of gold system
 - ▲ **KW-23-009A: 26.11 g/t gold over 3.16 meters, including 79.80 g/t gold over 0.33 meters**



Hanging Wall/Footwall Mineralization



- ▲ This is a robust gold system with a large footprint and near-surface, high-grade gold
- ▲ Sheared basalts carrying high-grade mineralization like Red Lake Mine
- ▲ Dryden Gold intercepted significant hanging wall and footwall structures in Sheared Basalts
- ▲ Previous operator did not assay hanging wall/footwall mineralization.
- ▲ Mineralization is controlled by cross-cutting structures and dykes



Looking West-northwest | Contoured Long section (Grade x Thickness) BM2

Re-logging Program

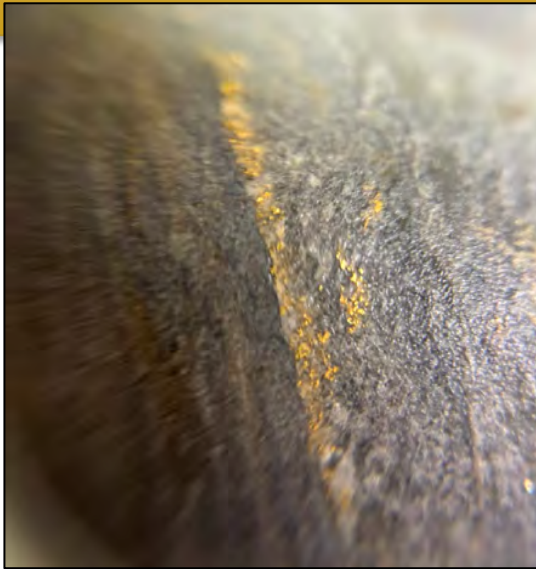
- ▲ Approximately **20,000 meters** of historic drill core was selectively sampled & securely stored (**Gold Rock, Cross River, Sherridon**, etc.)
- ▲ Re-logging select holes will **improve our understanding** of grade-thickness continuity
- ▲ The 2018 relogging program at Great Bear was instrumental in the discovery of Central LP Footwall Zone



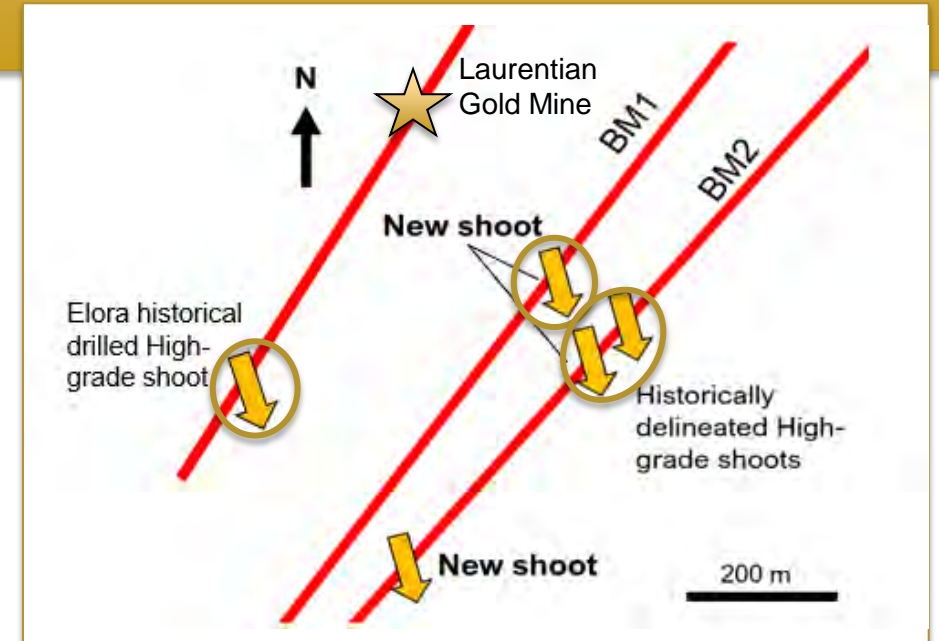
2024 Fall Drill Program

Expand on New High-Grade Shoots *BM1, BM2 & Elora Gold Systems*

- ▲ Follow up **down plunge** extension on Elora high-grade shoot
- ▲ Follow up on the **newly** intersected high-grade shoot on BM1



- ▲ Test structural **controls on high-grade** gold at Elora
- ▲ Test **continuity** between the two historically defined high-grade shoots

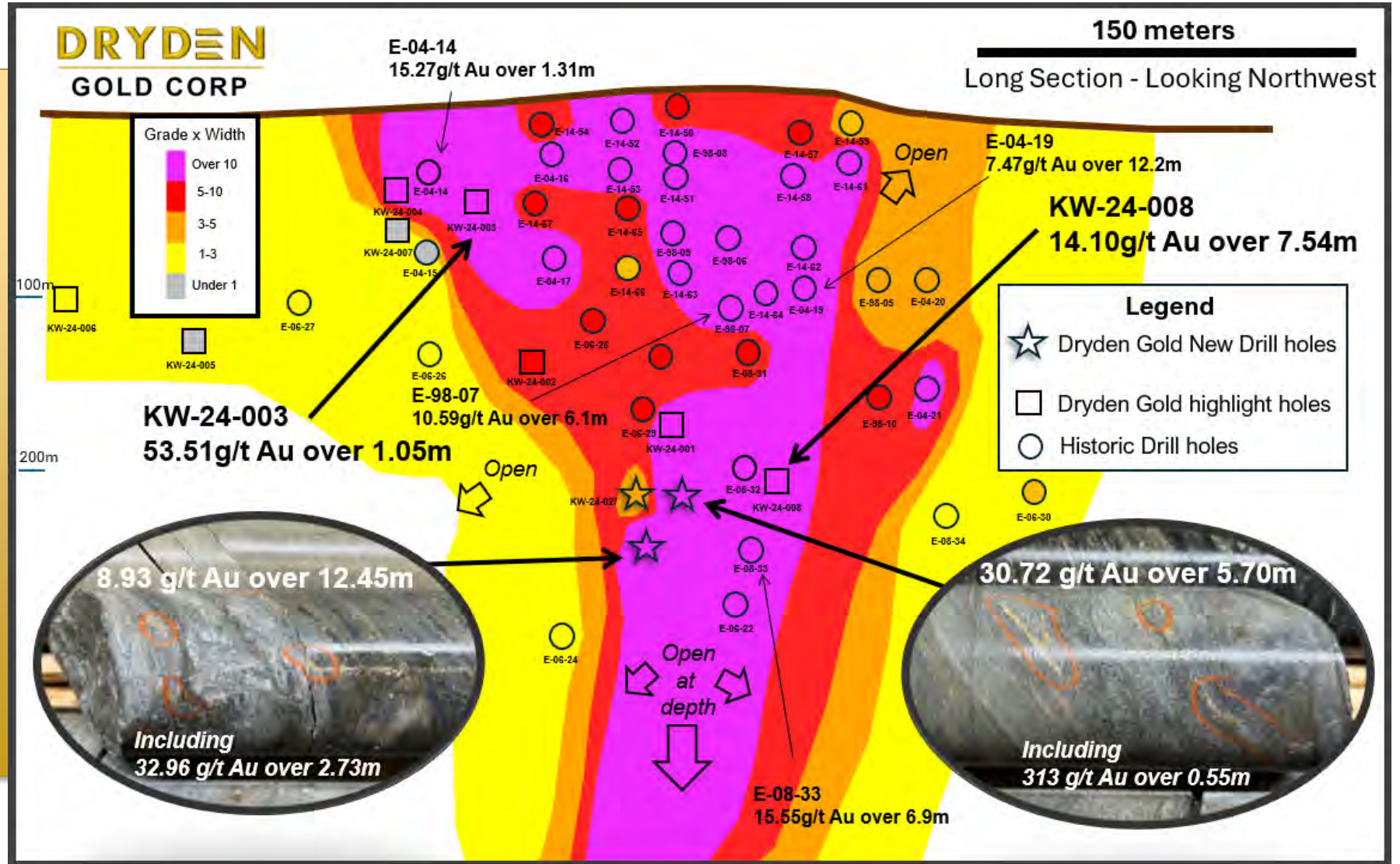


Elora Gold System | *Expand Along Strike and at Depth*



Laurentian Gold Mine

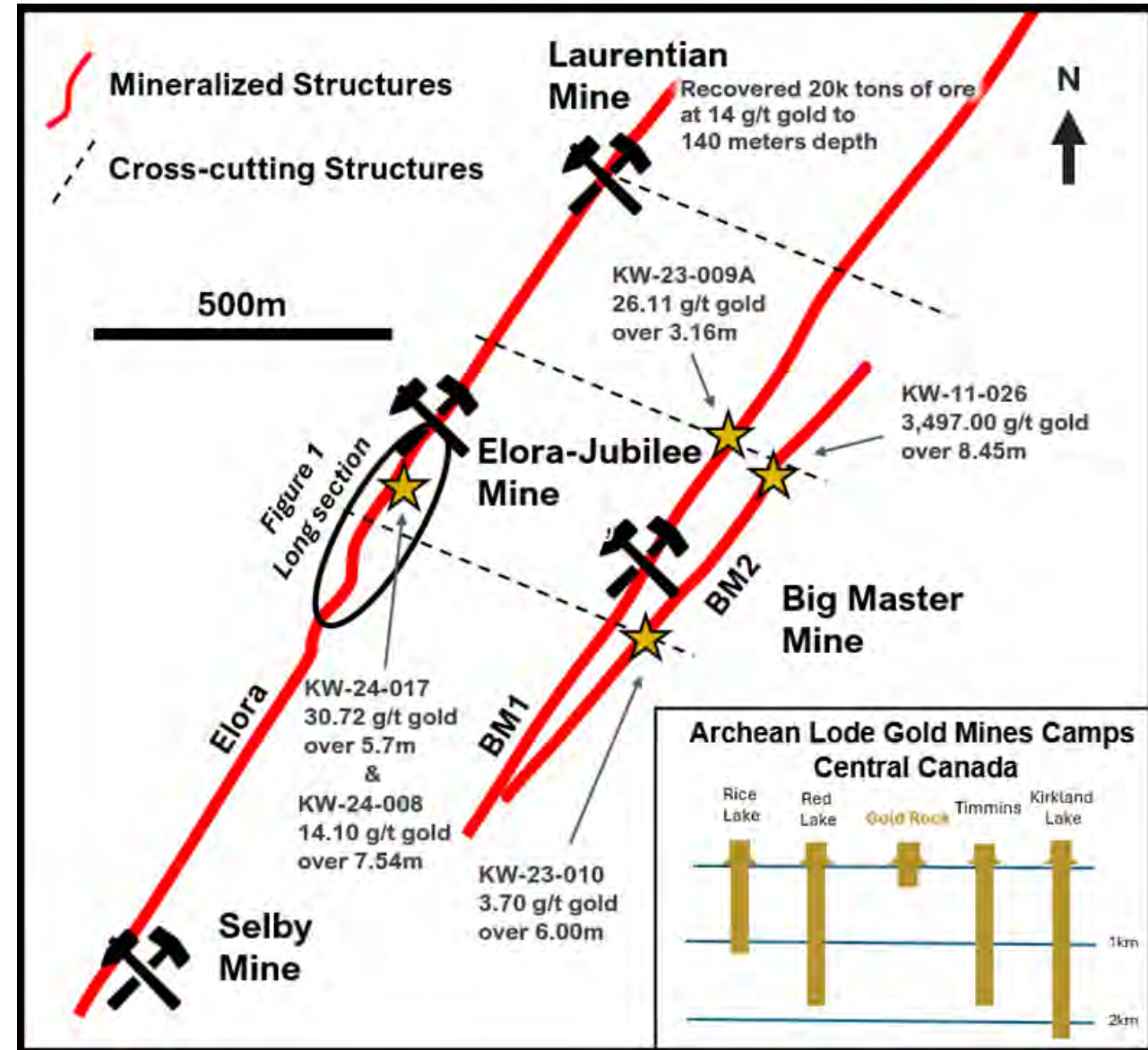
Elora Gold System hosted high-grade Laurentian Gold Mine with average grade of 14 g/t gold and mined to only 140 meters



Upcoming Drill Program Objectives

- ① *Expand on the high-grade shoot on the **Elora Gold System***
- ② *Expand the high-grade shoots on the **Big Master Gold System***
- ③ *Test **new** targets along strike and at depth on **Elora & Big Master***

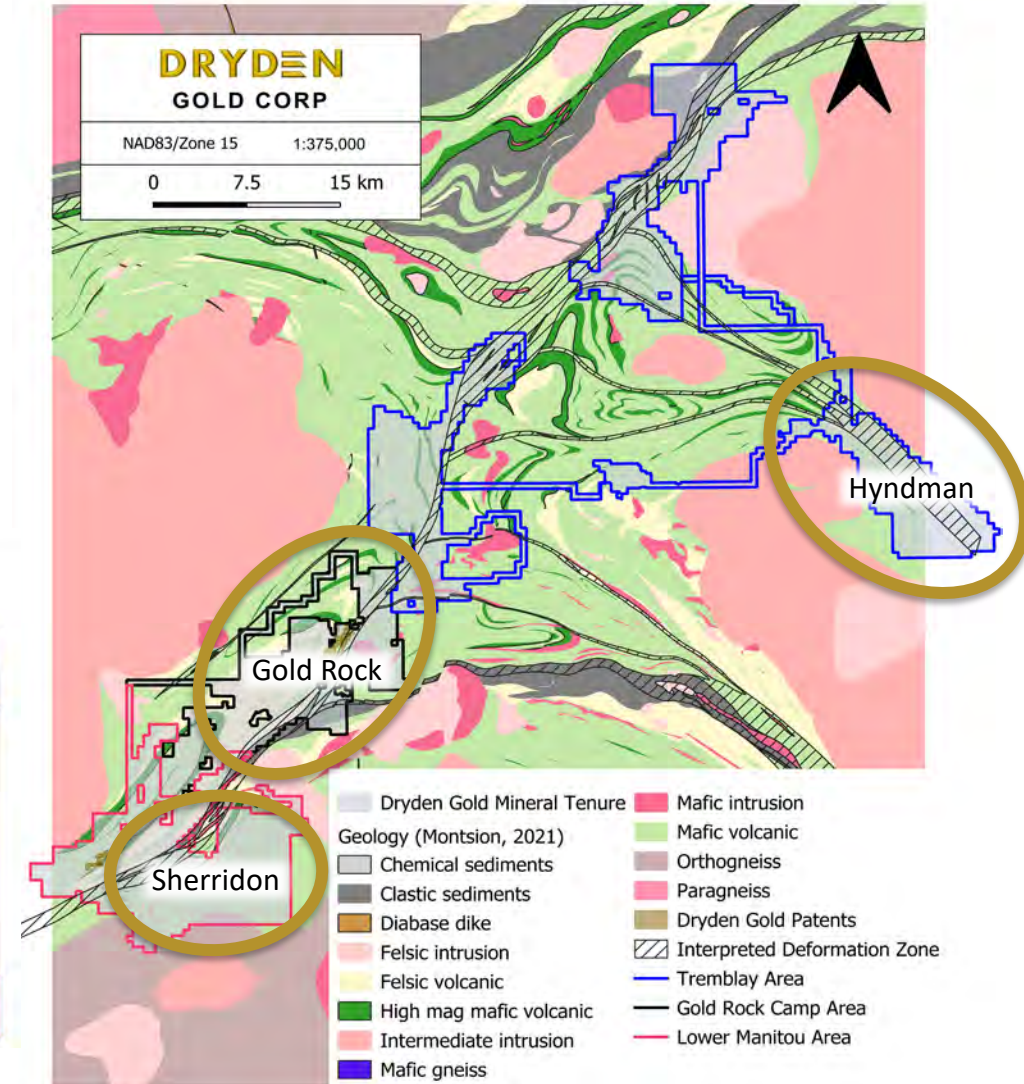
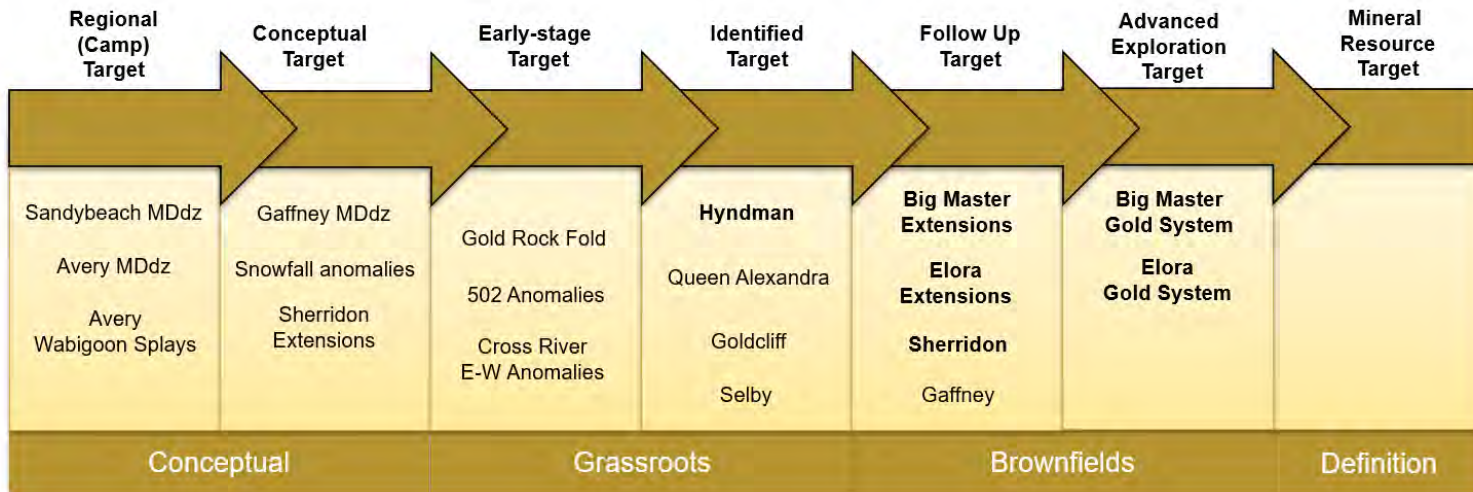
Geology team is completing Exploration Permit for Elora expansion drilling in 2025



Regional Camp with Multiple High Quality Targets

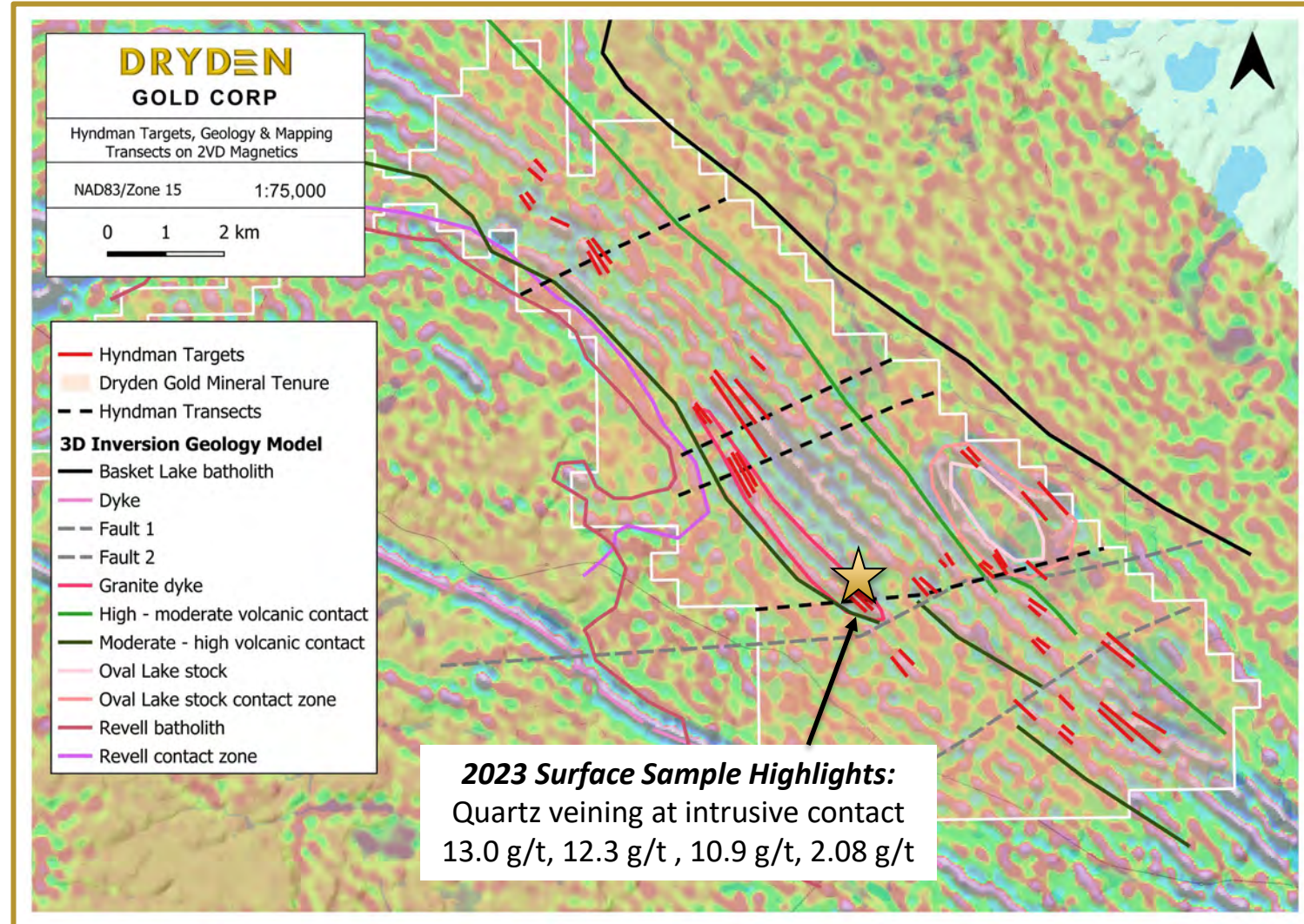
Dryden Gold's Resource Pipeline

- ▲ Systematic approach to District-Wide exploration.
- ▲ Primary Focus Remains on Gold Rock Camp Follow-up and Advanced Exploration stage targets.
- ▲ Several targets in the Brownfields & Grassroots categories have been mapped reviewed and field tested over the summer.



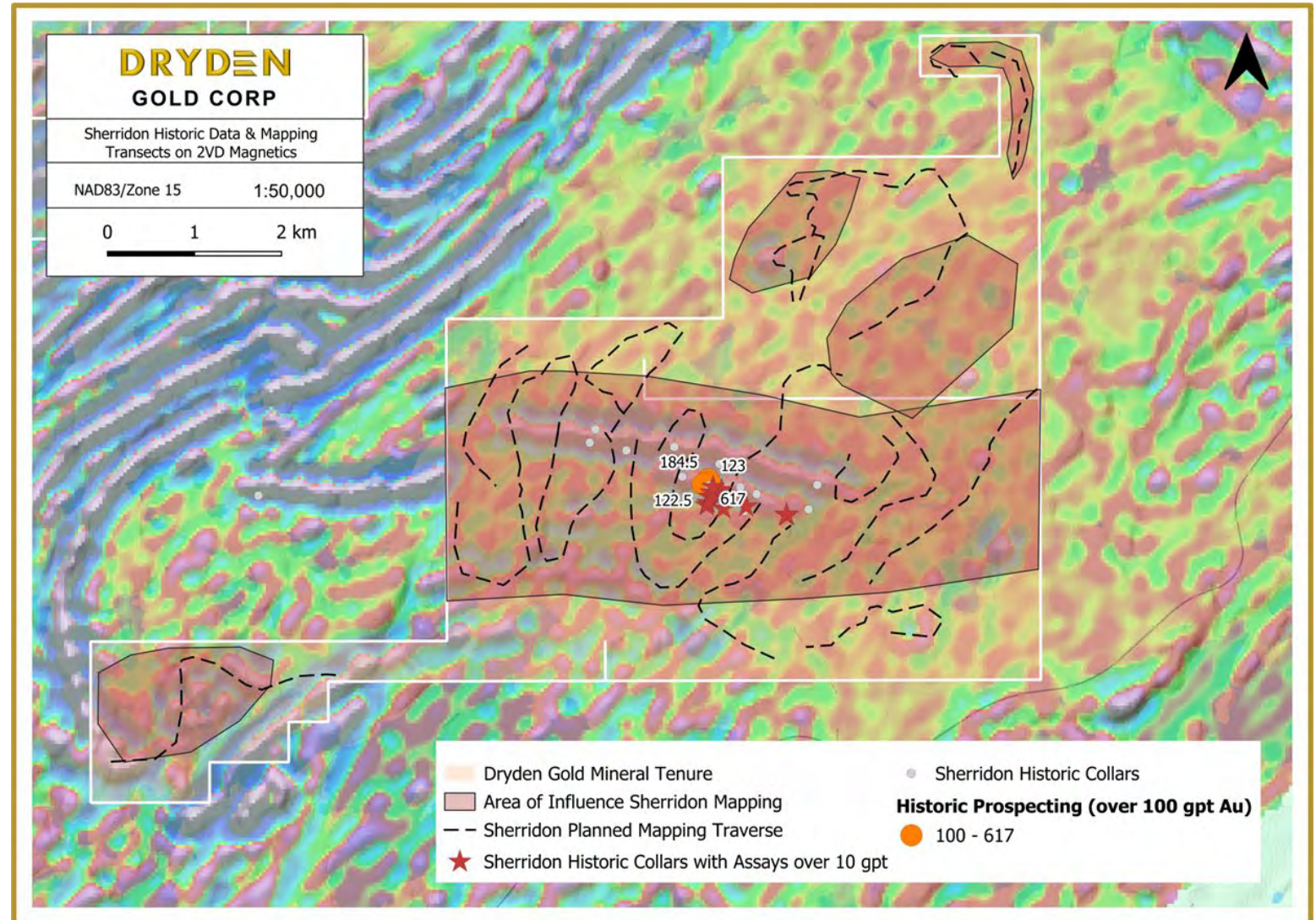
Regional Exploration - Hyndman

- ▲ 2023 reconnaissance program discovered new gold showing with 3/4 samples returning gold values higher than 10 g/t.
- ▲ 2024 Geophysics study highlighted several more geophysical anomaly targets, similar to the new discovery
- ▲ Geophysical anomalies occur over the new gold discovery
- ▲ 2024 summer mapping program at Hyndman was designed to target geophysical anomalies and structural interpretation



Regional Exploration - Sherridon

- ▲ Historical data compilation highlighted high-grade historical surface samples and drill results.
- ▲ Highlights
 - ▲ 617 g/t gold surface sample
 - ▲ Several surface samples over 100 g/t gold
 - ▲ 15.40 g/t gold over 5.50 m including 83.7 g/t gold over 1.0m in drill hole SH-12-25
- ▲ Mineralization related to geophysical anomaly – magnetic high
- ▲ 2024 mapping program to get a better understanding of the stratigraphic layers, geophysical anomalies and structural setting.



Why Dryden Gold?

- ▲ The Property
- ▲ The Team
- ▲ The High-Grade Gold
- ▲ The Geology
- ▲ The Jurisdiction
- ▲ The Infrastructure
- ▲ The Shareholders

The Next Red Lake?





DRYDEN

GOLD CORP

TSXV: DRY | OTCQB: DRYGF
DRYDENGOLD.COM

Contact:

Trey Wasser CEO & Director
+1 (940) 368-8337
twasser@drydengold.com

Maura Kolb President & QP
+1 (807) 632-2368
mjkolb@drydengold.com

