



TSX.V: RAGE
OTCQX: TGLDD
FRA: 070

RED LAKE'S PREMIER GOLD EXPLORER

JUNE 2024

RenegadeGold.com

FORWARD LOOKING STATEMENTS

This presentation contains certain statements that may be deemed “forward-looking statements”. All statements, other than statements of historical fact, that address events or developments that Renegade Gold Inc. (“Renegade”) expect to occur, are forward-looking statements.

Forward-looking statements are statements that are not historical facts and are generally, but not always identified by the words “expects”, “plans”, “anticipates”, “believes”, “intends”, “estimates”, “projects”, “potential” and similar expressions, or that events or conditions “will”, “would”, “may”, “could” or “should” occur.

Although Renegade believes the expectations expressed in such forward-looking statements are based on reasonable assumptions, such statements are not guarantees of future performance and actual results may differ materially from those in the forward-looking statements. Factors that could cause the actual results to differ materially from those in forward-looking statements include market prices, exploration and production successes or failures, continued availability of capital and financing, inability to obtain required shareholder or regulatory approvals, and general economic market or business conditions.

Forward-looking statements are based on the beliefs, estimates and opinions of Renegade management on the date the statements are made. The technical content has been reviewed and approved by Dale Ginn, P.Geo., the Executive Chair and director of the Company and a Qualified Person pursuant to National Instrument 43-101.

DOMINANT POSITION IN RED LAKE, ON



1 Well Established District

- Over 30M oz Au produced since 1920's
- Modern exploration focused on new terrain
- Great infrastructure, workforce and mill capacity

2 Massive, Strategically Located Property Portfolio

- Over 1,260 km² Across the prolific Red Lake Mining District
- Properties cover major regional gold-bearing structures
- Over 250 grassroots targets

3 Advanced Gold Deposit

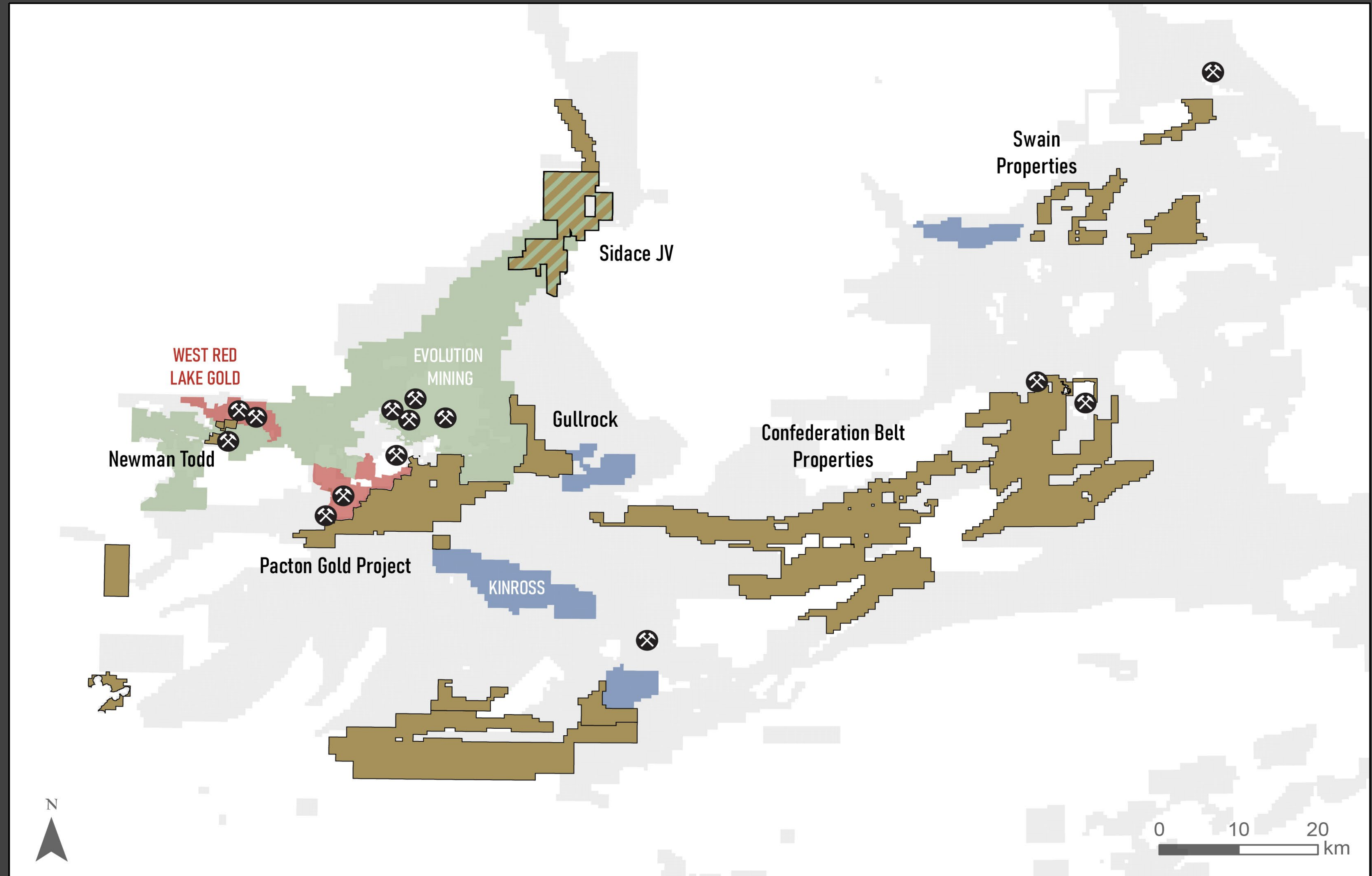
- High-grade Newman Todd Deposit
- Drilling is limited to upper 300 m

Red Lake, ON



DOMINANT POSITION IN RED LAKE, ON

- Over 1,260 km² across the prolific Red Lake Mining District
- Adjacent to major mines and projects including:
 - Evolution's Red Lake Mine
 - Kinross' Great Bear Project
 - West Red Lake Gold Mine's Madsen Mine
 - First Mining Gold's Springpole Project

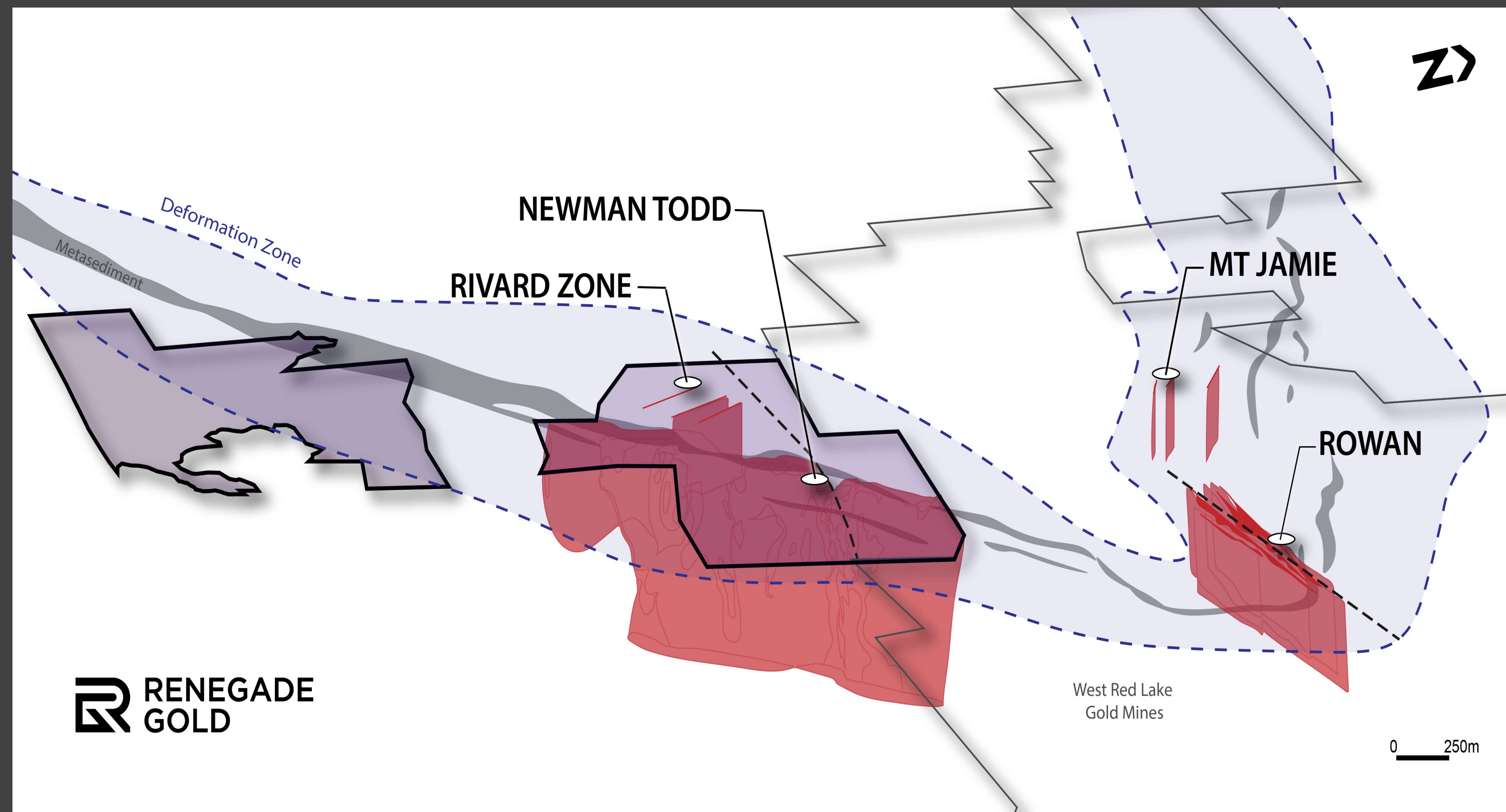


NEWMAN TODD HIGH-GRADE GOLD DEPOSIT

- > 20 mineralized zones along 2.2 km strike
- Open in all directions with minimal drilling below 300 m below surface
- Potential for major expansion of high-grade zones
- 25,000 m program underway to focus on high-grade extensional targets

NT22 211-212

- 8.75 g/t Au over 20.4 m
- 40.56 g/t over 4.18 m



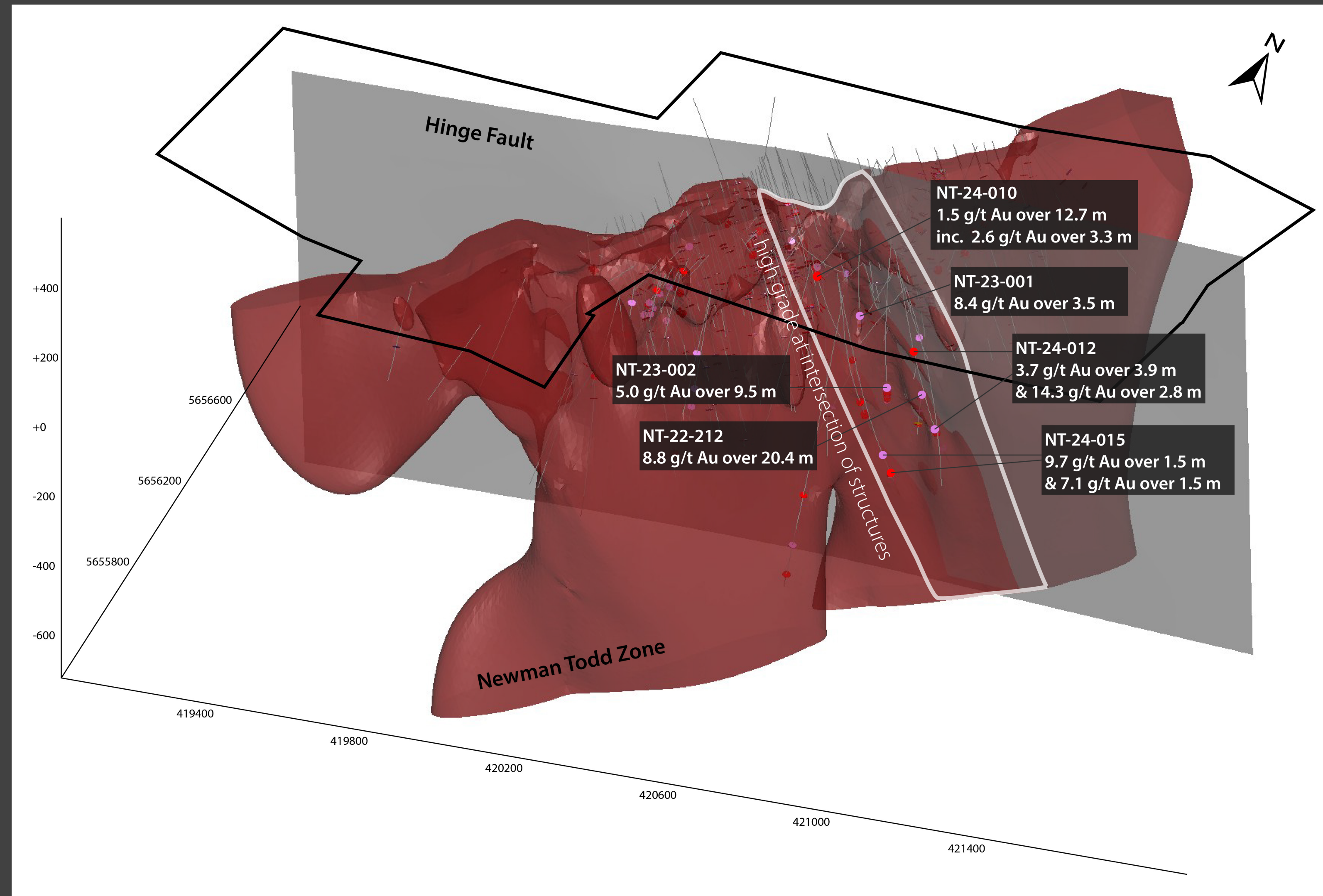
NEWMAN TODD HIGH-GRADE GOLD DEPOSIT

25,000 m program underway

- Initial phase of drilling has extended high-grade mineralization to over 750 m below surface (from 300 m)

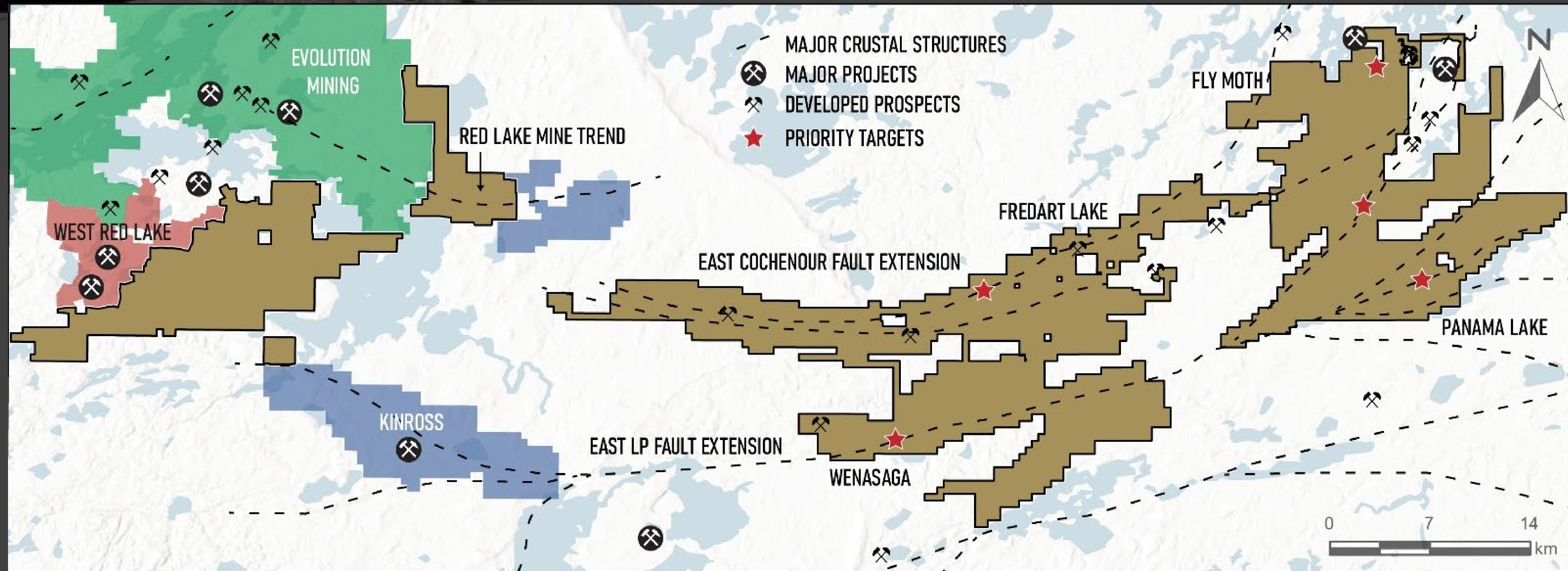
Drill Result Highlights

- 8.7 g/t Au over 20.4 m (NT-22-212)
- 8.4 g/t Au over 3.5 m (NT-23-001)
- 5.0 g/t Au over 9.0 m (NT-23-002)
- 9.7 g/t Au over 7.4 m (NT-23-003)
- 7.2 g/t Au over 2.0 m (NT-24-011)
- 14.3 g/t Au over 2.8 m and 8.1 g/t Au over 4.7 m (NT-24-012)



CONFEDERATION BELT

ALONG MAJOR REGIONAL GOLD TRENDS



Properties are underlain by major regional gold trends that control significant deposits in the Red Lake district

- Red Lake Mine Trend
- East Extension of LP Fault
- East Extension of Cochenour/Gullrock Fault

PACTON GOLD PROJECT

MULTIPLE DRILL READY TARGETS

CLAREMONT

- Widespread anomalous gold up to 2.6 g/t Au in grab samples has been exposed in 50 m by 60 m stripped outcrop
- On 2 km magnetic trend within felsic volcanic rocks of the Confederation Assemblage. Multiple similarities to Dixie deposit.

FAULKENHAM

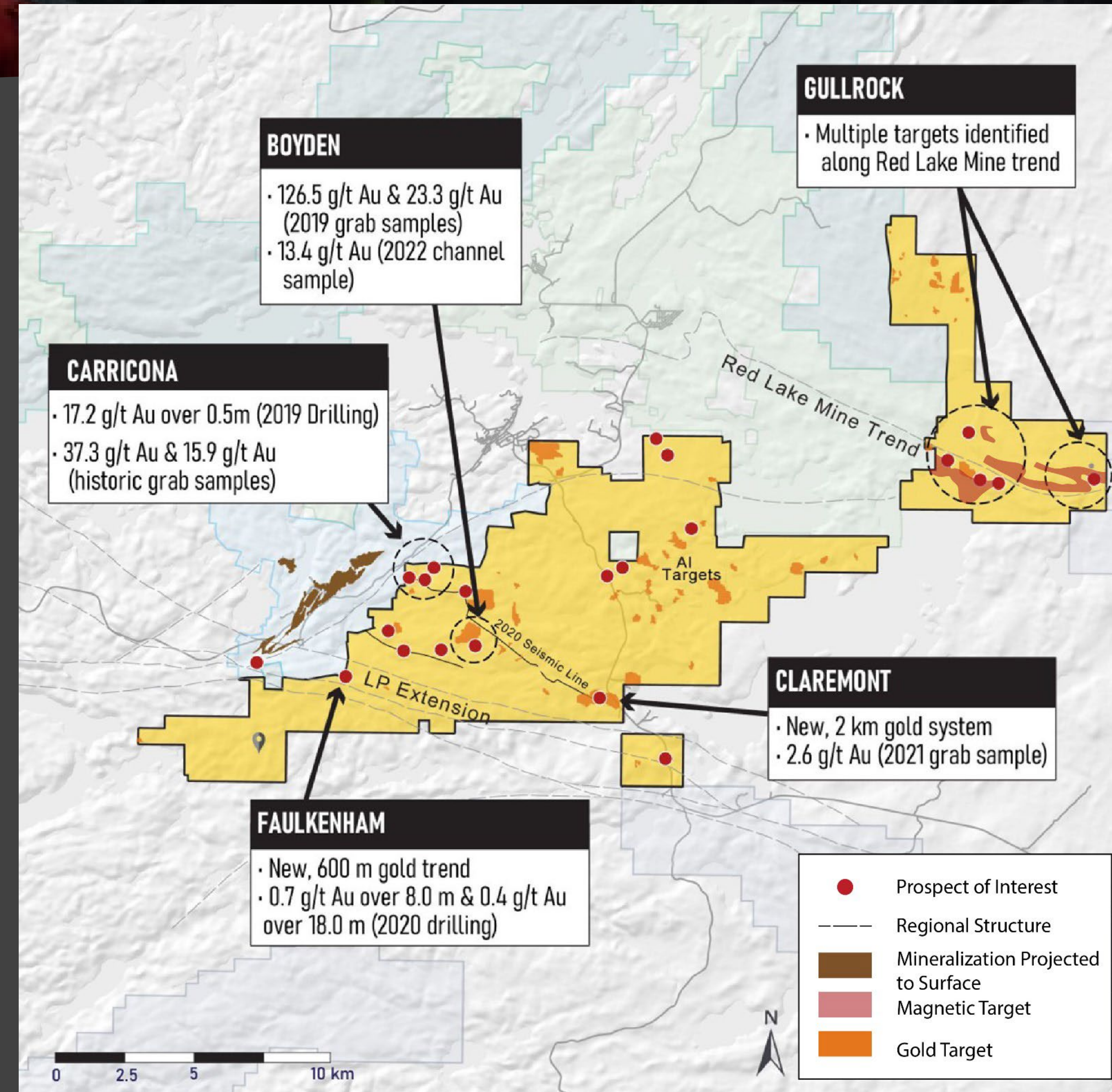
- 600 m trend of widespread, near-surface gold mineralization within the Madsen-Dixie corridor, open along strike and at depth

BOYDEN

- Channel sample of 13.4 g/t Au over 0.3 m. Grab samples include 126.5 g/t Au and 23.3 g/t Au

GULLROCK

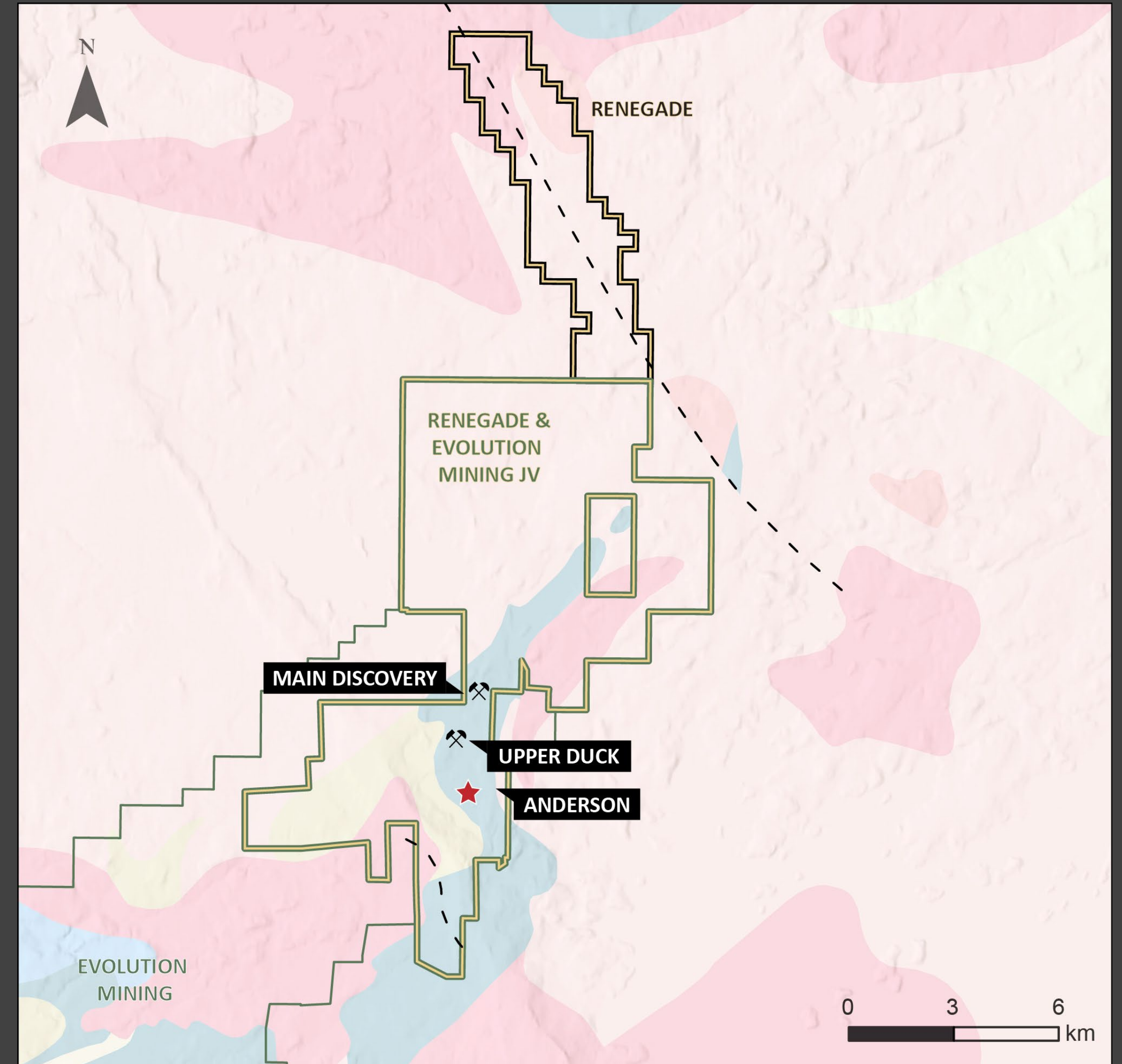
- Underexplored part of the Balmer Assemblage with gold-in-soil anomalies and folding identified in magnetics



SIDACE PROJECT

EVOLUTION JV

- Joint venture with Evolution Mining (53.3%), with Pacton (46.7%) as operator
- 8,600-hectare property located at the northern extent of the Red Lake Greenstone Belt
- Adjacent to Evolution's construction-stage Bateman gold project
- Advanced gold exploration project with over 80,000 m of historic drilling
- 3 defined zones containing areas of both high-grade and widespread, continuous gold mineralization
 - All zones remain open along strike and at depth



2024 WORK PROGRAM

25,000 m Drill Program

★ Newman Todd

Targeting high-grade extensions along strike and at depth

★ Regional Targets

Multiple drill ready targets including Panama, Fly Moth and Claremont

Target Generation

★ Prospecting and mapping

★ Sampling historic core

★ Geophysics and LiDAR

Newman Todd Core NT-108

MANAGEMENT

Nav Dhaliwal | **President & CEO**

Founding CEO of Bonterra Resources, which made the award-winning discovery of the Gladiator gold deposit in Quebec. Founded multiple other successful resource companies including Kanadario Gold and Gatling Exploration; Founder of the highly successful RSD Capital. Integral in raising over C\$400M for his affiliated companies since 2010.

David Velisek | **Director**

Over 25 years in the capital markets. Previously licensed trader and Investment Advisor. Over 10 years of consulting in public markets/corporate finance. Previously a Director of Trillium Gold Mines, Amador Gold Corp, Novo Resources, Finore Mining, and Delon Resources.

Dale Ginn (P.Geo) | **Executive Chair**

Nearly 30 years as a mining executive and geologist. Led and participated in numerous gold and base metal discoveries (e.g. Gladiator, Hinge, 007, 777, Trout Lake, and Tartan Lake deposits). Received Quebec Discovery of the Year Golden Hammer award in 2018 for the Gladiator deposit. Previous work with Goldcorp, Harmony Gold, HudBay, Westmin, San Gold, Bonterra, and others.

Nathan Tribble | **Director**

Over 15 years of professional experience in exploration and mining, with a particular focus on gold and base metal exploration and project evaluation. Part of the team that discovered the 8.2 million-ounce Côté Lake gold deposit for Trelawney Mining. Past experience includes Senior Principal Geologist for Sprott Mining, Senior Geologist for Bonterra Resources, Jerritt Canyon Gold, Kerr Mines, Northern Gold, Lake Shore Gold and Vale Inco.

SHARE CAPITAL

RAGE:TSX-V

TGLDD:OTC

070:FSE

As of April 10, 2024

Shares Outstanding	37.5 M
Options	0.6 M
Warrants	23.1 M
Fully Diluted	61.2 M



1615 - 200 Burrard St
Vancouver, BC
Canada, V6C 3L6

info@renegadegold.com

604-678-5308